

BIDS ESTIMATING

Client: (Hidden for Privacy)
 Project Name: (Hidden for Privacy)
 Project ID: (Hidden for Privacy)
 Last Updated: 19/02/2021



Website: bidsestimating.com
 Email: info@bidsestimating.com
 Contact: +1 (832) 346 0507

Quantity Takeoff Sheet

Special Construction

ITEM #	REF. SHEET	DETAIL	CSI SECT	Sub Contractor	DESCRIPTION	QTY.	WAST AGE	QTY WITH WASTAG E	UNIT	UNIT LABOR HOURS	TOTAL LABOR HOURS	PER HOUR LABOR RATE	TOTAL LABOR COST	UNIT MATERIAL COST	TOTAL MATERIAL COST	ITEM COST	TRADE COST
\$ 26,655																	
General																	
Plan Design and Permitting																	
1			DIV-01	General Requirements	Architecture (Assumed By Owner)	1	0%	1	LS			\$ 25.0	\$ -			\$ -	
2			DIV-01	General Requirements	Engineering (Assumed By Owner)	1	0%	1	LS			\$ 25.0	\$ -			\$ -	
3			DIV-01	General Requirements	Surveying	14,229	5%	14,940	SF			\$ 25.0	\$ -			\$ -	
4			DIV-01	General Requirements	Soils Report (Assumed By Owner)	14,229	0%	14,229	LS			\$ 25.0	\$ -			\$ -	
5			DIV-01	General Requirements	Geological Report (Assumed By Owner)	14,229	0%	14,229	LS			\$ 25.0	\$ -			\$ -	
6			DIV-01	General Requirements	Concrete Testing	1	0%	1	LS			\$ 25.0	\$ -			\$ -	
7			DIV-01	General Requirements	Permit Running (Assumed By Owner)	1	0%	1	LS			\$ 25.0	\$ -			\$ -	
8			DIV-01	General Requirements	Permits (Based on interior finish area)	14,229	5%	14,940	SF			\$ 25.0	\$ -			\$ -	
9			DIV-01	General Requirements	Plan Coordination	1	0%	1	LS			\$ 25.0	\$ -			\$ -	
10			DIV-01	General Requirements	Roof Inspection	14,229	5%	14,940	SF			\$ 25.0	\$ -			\$ -	
11			DIV-01	General Requirements	Blueprints	14,229	5%	14,940	SF	0.0005	7.74	\$ 25.0	\$ 193.6			\$ 194	
Utilities																	
12			DIV-01	General Requirements	Utilities during construction (Based on interior finish area)	14,229	5%	14,940	SF	0.0034	51.22	\$ 25.0	\$ 1,280.4			\$ 1,280	
13			DIV-01	General Requirements	Port-o-Potty (Based on interior finish area)	14,229	5%	14,940	SF	0.0008	12.17	\$ 25.0	\$ 304.3			\$ 304	
14			DIV-01	General Requirements	Temporary Power (Based on interior finish area)	14,229	5%	14,940	SF	0.0016	24.53	\$ 25.0	\$ 613.2			\$ 613	
Equipment and Tools																	
15			DIV-01	General Requirements	Tool Rentals	1	0%	1	LS			\$ 25.0	\$ -			\$ -	
16			DIV-01	General Requirements	Tool Shed	1	0%	1	LS			\$ 25.0	\$ -			\$ -	
17			DIV-01	General Requirements	Dust Control	14,229	5%	14,940	SF			\$ 25.0	\$ -			\$ -	
18			DIV-01	General Requirements	Ice, Water, Beverages	1	0%	1	LS			\$ 25.0	\$ -			\$ -	
19			DIV-01	General Requirements	Garbage Dumpster / Trash Containers	1	0%	1	LS			\$ 25.0	\$ -			\$ -	
20			DIV-01	General Requirements	Mobilization	14,229	5%	14,940	SF	0.0583	870.40	\$ 25.0	\$ 21,760.0			\$ 21,760	
Signage and Promotion																	
21			DIV-01	General Requirements	Job Signs	1	0%	1	LS			\$ 25.0	\$ -			\$ -	
22			DIV-01	General Requirements	Job Photos	1	0%	1	LS			\$ 25.0	\$ -			\$ -	
23			DIV-01	General Requirements	Signage	1	0%	1	LS			\$ 25.0	\$ -			\$ -	
24			DIV-01	General Requirements	Promotion/entertainment	1	0%	1	LS			\$ 25.0	\$ -			\$ -	
25			DIV-01	General Requirements	Misc.	1	0%	1	LS			\$ 25.0	\$ -			\$ -	
Cleaning and Final																	
26			DIV-01	General Requirements	Trash	14,229	5%	14,940	SF			\$ 25.0	\$ -			\$ -	
27			DIV-01	General Requirements	Final Cleaning	14,229	5%	14,940	SF	0.0067	100.15	\$ 25.0	\$ 2,503.9			\$ 2,504	
28			DIV-01	General Requirements	Window washing (rough # of windows)	1	0%	1	LS			\$ 25.0	\$ -			\$ -	
29			DIV-01	General Requirements	Punch List Items	1	0%	1	LS			\$ 25.0	\$ -			\$ -	
Bonds, Insurance, Legal																	

BIDS ESTIMATING

Client: (Hidden for Privacy)
 Project Name: (Hidden for Privacy)
 Project ID: (Hidden for Privacy)
 Last Updated: 19/02/2021



Website: bidsestimating.com
 Email: info@bidsestimating.com
 Contact: +1 (832) 346 0507

Quantity Takeoff Sheet

Special Construction

ITEM #	REF. SHEET	DETAIL	CSI SECT	Sub Contractor	DESCRIPTION	QTY.	WAST AGE	QTY WITH WASTAG E	UNIT	UNIT LABOR HOURS	TOTAL LABOR HOURS	PER HOUR LABOR RATE	TOTAL LABOR COST	UNIT MATERIAL COST	TOTAL MATERIAL COST	ITEM COST	TRADE COST
30			DIV-01	General Requirements	Casualty Insurance	1	0%	1	LS		-	\$ 25.0	\$ -			\$ -	
31			DIV-01	General Requirements	Medical Insurance	1	0%	1	LS		-	\$ 25.0	\$ -			\$ -	
32			DIV-01	General Requirements	General Liability Insurance	1	0%	1	LS		-	\$ 25.0	\$ -			\$ -	
					Supervision, Temporary Control & Facilities												
33			DIV-01	General Requirements	Project Management	14,229	5%	14,940	SF	0.0217	324.49	\$ 25.0	\$ 8,112.3			\$ 8,112	
34			DIV-01	General Requirements	Supervision	14,229	5%	14,940	SF	0.0400	597.20	\$ 25.0	\$ 14,930.0			\$ 14,930	
35			DIV-01	General Requirements	Temporary Control & Facilities	14,229	5%	14,940	SF	0.0032	47.44	\$ 25.0	\$ 1,185.9			\$ 1,186	
			DIV-13		Special Construction												\$ 324,904
					Pool Concrete												
36	SP1.0	SP4.0	DIV-13	Site Concrete	4.7 SF Pool Stairs, Reinforced.	5	5%	5	CY	3.000	16.45	\$ 38.0	\$ 624.3	\$ 145.0	\$ 795.1	\$ 1,419	
37	SP1.0	SP4.0	DIV-13	Site Concrete	#4 Cont. Bars	201	5%	211	LBS	0.010	2.11	\$ 38.0	\$ 80.1	\$ 0.9	\$ 196.3	\$ 276	
38	SP1.0	SP4.0	DIV-13	Site Concrete	#4 Bent Bars	616	5%	647	LBS	0.010	6.47	\$ 38.0	\$ 245.6	\$ 0.9	\$ 601.9	\$ 848	
39	SP1.0	SP4.0	DIV-13	Site Concrete	Formwork	120	5%	126	SF	0.020	2.52	\$ 38.0	\$ 95.6		\$ -	\$ 96	
40	SP1.0	SP4.0	DIV-13	Site Concrete	6.4 SF Pool Stairs, Reinforced.	8	5%	8	CY	2.000	15.93	\$ 38.0	\$ 604.6	\$ 145.0	\$ 1,154.8	\$ 1,759	
41	SP1.0	SP4.0	DIV-13	Site Concrete	#4 Cont. Bars	364	5%	383	LBS	0.010	3.83	\$ 38.0	\$ 145.2	\$ 0.9	\$ 355.9	\$ 501	
42	SP1.0	SP4.0	DIV-13	Site Concrete	#4 Bent Bars	663	5%	696	LBS	0.010	6.96	\$ 38.0	\$ 264.1	\$ 0.9	\$ 647.1	\$ 911	
43	SP1.0	SP4.0	DIV-13	Site Concrete	#3 Ties	29	5%	30	LBS	0.010	0.30	\$ 38.0	\$ 11.5	\$ 0.9	\$ 28.1	\$ 40	
44	SP1.0	SP4.0	DIV-13	Site Concrete	Formwork	192	5%	202	SF	0.020	4.03	\$ 38.0	\$ 153.0		\$ -	\$ 153	
45	SP1.0	SP4.0	DIV-13	Site Concrete	1.3 SF Concrete Stairs, Reinforced	2	5%	2	CY	10.000	24.98	\$ 38.0	\$ 948.2	\$ 145.0	\$ 362.3	\$ 1,311	
46	SP1.0	SP4.0	DIV-13	Site Concrete	#4 Cont. Bars	98	5%	103	LBS	0.010	1.03	\$ 38.0	\$ 39.2	\$ 0.9	\$ 96.2	\$ 135	
47	SP1.0	SP4.0	DIV-13	Site Concrete	#4 Bent Bars	177	5%	186	LBS	0.010	1.86	\$ 38.0	\$ 70.5	\$ 0.9	\$ 172.7	\$ 243	
48	SP1.0	SP4.0	DIV-13	Site Concrete	Formwork	65	5%	68	SF	0.020	1.37	\$ 38.0	\$ 51.9		\$ -	\$ 52	
49	SP1.0	SP4.0	DIV-13	Site Concrete	1.7 SF Pool Beam, Reinforced	13	5%	14	CY	2.000	28.25	\$ 38.0	\$ 1,072.1	\$ 145.0	\$ 2,048.1	\$ 3,120	
50	SP1.0	SP4.0	DIV-13	Site Concrete	#4 Cont. Bars	717	5%	753	LBS	0.010	7.53	\$ 38.0	\$ 285.7	\$ 0.9	\$ 700.1	\$ 986	
51	SP1.0	SP4.0	DIV-13	Site Concrete	#3 Ties	193	5%	203	LBS	0.010	2.03	\$ 38.0	\$ 77.0	\$ 0.9	\$ 188.7	\$ 266	
52	SP1.0	SP4.0	DIV-13	Site Concrete	2.3 SF Pool Wall, Reinforced	16	5%	16	CY	2.000	32.60	\$ 38.0	\$ 1,237.4	\$ 145.0	\$ 2,363.7	\$ 3,601	
53	SP1.0	SP4.0	DIV-13	Site Concrete	#4 Cont. Bars	488	5%	512	LBS	0.010	5.12	\$ 38.0	\$ 194.4	\$ 0.9	\$ 476.3	\$ 671	
54	SP1.0	SP4.0	DIV-13	Site Concrete	#4 Bent Bars	961	5%	1,009	LBS	0.010	10.09	\$ 38.0	\$ 382.8	\$ 0.9	\$ 938.0	\$ 1,321	
55	SP1.0	SP4.0	DIV-13	Site Concrete	Formwork	848	5%	891	SF	0.020	17.81	\$ 38.0	\$ 676.0		\$ -	\$ 676	
56	SP1.0	SP4.0	DIV-13	Site Concrete	2.6 SF Pool Wall, Reinforced	3	5%	3	CY	10.000	30.33	\$ 38.0	\$ 1,151.2	\$ 145.0	\$ 439.8	\$ 1,591	
57	SP1.0	SP4.0	DIV-13	Site Concrete	#4 Cont. Bars	101	5%	106	LBS	0.010	1.06	\$ 38.0	\$ 40.1	\$ 0.9	\$ 98.1	\$ 138	
58	SP1.0	SP4.0	DIV-13	Site Concrete	#4 Bent Bars	228	5%	239	LBS	0.010	2.39	\$ 38.0	\$ 90.8	\$ 0.9	\$ 222.4	\$ 313	
59	SP1.0	SP4.0	DIV-13	Site Concrete	Formwork	140	5%	147	SF	0.020	2.94	\$ 38.0	\$ 111.4		\$ -	\$ 111	
60	SP1.0	SP4.0	DIV-13	Site Concrete	6 SF Planter Wall, Reinforced	7	5%	7	CY	2.000	14.37	\$ 38.0	\$ 545.3	\$ 145.0	\$ 1,041.7	\$ 1,587	
61	SP1.0	SP4.0	DIV-13	Site Concrete	#4 Cont. Bars	312	5%	327	LBS	0.010	3.27	\$ 38.0	\$ 124.2	\$ 0.9	\$ 304.2	\$ 428	
62	SP1.0	SP4.0	DIV-13	Site Concrete	#4 Bent Bars	704	5%	739	LBS	0.010	7.39	\$ 38.0	\$ 280.5	\$ 0.9	\$ 687.4	\$ 968	
63	SP1.0	SP4.0	DIV-13	Site Concrete	Formwork	155	5%	163	SF	0.020	3.26	\$ 38.0	\$ 123.5		\$ -	\$ 124	

BIDS ESTIMATING

Client: (Hidden for Privacy)
 Project Name: (Hidden for Privacy)
 Project ID: (Hidden for Privacy)
 Last Updated: 19/02/2021



Website: bidsestimating.com
 Email: info@bidsestimating.com
 Contact: +1 (832) 346 0507

Quantity Takeoff Sheet

Special Construction

ITEM #	REF. SHEET	DETAIL	CSI SECT	Sub Contractor	DESCRIPTION	QTY.	WAST AGE	QTY WITH WASTAG E	UNIT	UNIT LABOR HOURS	TOTAL LABOR HOURS	PER HOUR LABOR RATE	TOTAL LABOR COST	UNIT MATERIAL COST	TOTAL MATERIAL COST	ITEM COST	TRADE COST
64	SP1.0	SP4.0	DIV-13	Site Concrete	13.5 SF Beach Entry Concrete Slab, Reinforced	15	5%	16	CY	2.000	31.28	\$ 38.0	\$ 1,187.2	\$ 145.0	\$ 2,267.8	\$ 3,455	
65	SP1.0	SP4.0	DIV-13	Site Concrete	#4 Bars	1,043	5%	1,095	LBS	0.010	10.95	\$ 38.0	\$ 415.7	\$ 0.9	\$ 1,018.7	\$ 1,434	
66	SP1.0	SP4.0	DIV-13	Site Concrete	Compaction Required For Aggregate Base	588	5%	617	SF	0.010	6.17	\$ 38.0	\$ 234.3		\$ -	\$ 234	
67	SP1.0	SP4.0	DIV-13	Site Concrete	8" Thick Tanning Shelf Slab, Reinforced	8	5%	9	CY	2.000	17.31	\$ 38.0	\$ 657.0	\$ 145.0	\$ 1,255.0	\$ 1,912	
68	SP1.0	SP4.0	DIV-13	Site Concrete	#4 Bars	593	5%	623	LBS	0.010	6.23	\$ 38.0	\$ 236.4	\$ 0.9	\$ 579.2	\$ 816	
69	SP1.0	SP4.0	DIV-13	Site Concrete	Compaction Required For Aggregate Base	332	5%	349	SF	0.010	3.49	\$ 38.0	\$ 132.3		\$ -	\$ 132	
70	SP1.0	SP4.0	DIV-13	Site Concrete	8" Thick Pool Slab, Reinforced	38	5%	40	CY	2.000	79.98	\$ 38.0	\$ 3,035.5	\$ 145.0	\$ 5,798.6	\$ 8,834	
71	SP1.0	SP4.0	DIV-13	Site Concrete	#4 Bars	2,743	5%	2,880	LBS	0.010	28.80	\$ 38.0	\$ 1,092.9	\$ 0.9	\$ 2,678.1	\$ 3,771	
72	SP1.0	SP4.0	DIV-13	Site Concrete	Compaction Required For Aggregate Base	1,535	5%	1,612	SF	0.010	16.12	\$ 38.0	\$ 611.6		\$ -	\$ 612	
73	SP1.0	SP4.0	DIV-13	Site Concrete	5" Pool Deck Slab, Reinforced	93	5%	98	CY	2.000	195.24	\$ 38.0	\$ 7,409.8	\$ 145.0	\$ 14,154.6	\$ 21,564	
74	SP1.0	SP4.0	DIV-13	Site Concrete	#4 Bars	10,679	5%	11,213	LBS	0.010	112.13	\$ 38.0	\$ 4,255.6	\$ 0.9	\$ 10,428.0	\$ 14,684	
75	SP1.0	SP4.0	DIV-13	Site Concrete	Compaction Required For Aggregate Base	5,977	5%	6,275	SF	0.010	62.75	\$ 38.0	\$ 2,381.7		\$ -	\$ 2,382	
					<i>Note: Please verify whether compaction will be by others or in our scope.</i>												
76	SP1.0	SP4.0	DIV-13	Site Concrete	0.3 SF Slab Edge	3	5%	3	CY	10.000	32.72	\$ 38.0	\$ 1,242.0	\$ 145.0	\$ 474.5	\$ 1,716	
77	SP1.0	SP4.0	DIV-13	Site Concrete	3.1 SF Thickened Slab @ Channel Drain	0.1	5%	0	CY	15.000	1.19	\$ 38.0	\$ 45.3	\$ 145.0	\$ 11.5	\$ 57	
78	SP1.1	SP1.1	DIV-13	Site Concrete	2 CU. FT. Of 1"-3" Diam. Clean Washed Gravel; Wrap Gravel In Nonwoven Geotextile Fabric	2	5%	2	CY	2.000	4.20	\$ 38.0	\$ 159.4	\$ 32.5	\$ 68.3	\$ 228	
79	SP3.0	SP3.0	DIV-13	Site Concrete	36"x36"x8" Thick Thrust Block	0.2	5%	0	CY	15.000	3.52	\$ 38.0	\$ 133.5	\$ 145.0	\$ 34.0	\$ 168	
80			DIV-13	Site Concrete	Mobilization For Concrete	211	5%	222	CY	0.300	66.47	\$ 38.0		\$ 11.4	\$ 2,522.6	\$ 2,523	
81			DIV-13	Site Concrete	Mobilization For Steel	10	5%	11	TONS	5.000	54.89	\$ 38.0		\$ 189.8	\$ 2,083.1	\$ 2,083	
					Pool Finish												
82	SP1.0	SP1.0	DIV-13	Tiler	Slip-Resistant Finish At Pool Deck	3,473	5%	3,646	SF	0.089	324.51	\$ 17.8	\$ 5,785.2	\$ 2.7	\$ 9,844.7	\$ 15,630	
83	SP1.0	SP1.0	DIV-13	Stucco - EIFS	3/8" Thick Plaster Finish (Light Color) Misc. Pool Deck Finish	3,275	5%	3,439	SF	0.200	687.76	\$ 33.2	\$ 22,849.3	\$ 2.6	\$ 8,940.9	\$ 31,790	
84	SP1.0	SP1.0	DIV-13	Tiler	<i>Note: Details Not Given, Please Verify Required Or Not.</i>	2,277	5%	2,391	SF	0.089	212.79	\$ 17.8	\$ 3,793.4	\$ 2.7	\$ 6,455.3	\$ 10,249	
85	SP1.0	SP1.0	DIV-13	Tiler	2" Non-Slip Tile Delineator Band	277	5%	291	LF	0.025	7.28	\$ 17.8	\$ 129.8	\$ 1.8	\$ 531.1	\$ 661	
86	SP1.0	SP1.0	DIV-13	Tiler	6" Band Of 6"x6" Frost proof Waterline Tile	228	5%	239	LF	0.035	8.38	\$ 17.8	\$ 149.4	\$ 9.0	\$ 2,154.6	\$ 2,304	

BIDS ESTIMATING

Client: (Hidden for Privacy)
 Project Name: (Hidden for Privacy)
 Project ID: (Hidden for Privacy)
 Last Updated: 19/02/2021



Website: bidsestimating.com
 Email: info@bidsestimating.com
 Contact: +1 (832) 346 0507

Quantity Takeoff Sheet

Special Construction

ITEM #	REF. SHEET	DETAIL	CSI SECT	Sub Contractor	DESCRIPTION	QTY.	WAST AGE	QTY WITH WASTAG E	UNIT	UNIT LABOR HOURS	TOTAL LABOR HOURS	PER HOUR LABOR RATE	TOTAL LABOR COST	UNIT MATERIAL COST	TOTAL MATERIAL COST	ITEM COST	TRADE COST
87	SP1.0	SP1.0	DIV-13	Exterior Painter	NO DIVING' 4" Black Letter	10	0%	10	EA	0.946	9.46	\$ 16.4	\$ 154.9	\$ 68.6	\$ 685.9	\$ 841	
88	SP1.0	SP1.0	DIV-13	Tiler	1'-6" Wide Precast Bullnose Coping	465	5%	488	LF	0.160	78.12	\$ 17.8	\$ 1,392.7	\$ 14.3	\$ 6,972.2	\$ 8,365	
					Pool Signage												
89	SP0.0	SP0.0	DIV-13	Site Signage	"Warning- No Lifeguard On Duty" (Letter Size: 4")	1	0%	1	EA	2,070	2.07	\$ 30.2	\$ 62.6	\$ 154.2	\$ 154.2	\$ 217	
90	SP0.0	SP0.0	DIV-13	Site Signage	"No Diving" And International No Diving Symbol (Letter Size: 4")	1	0%	1	EA	1,349	1.35	\$ 30.2	\$ 40.8	\$ 111.8	\$ 111.8	\$ 153	
91	SP0.0	SP0.0	DIV-13	Site Signage	"In case Of Emergency, Dial 911" (Letter Size: 4")	1	0%	1	EA	0,902	0.90	\$ 30.2	\$ 27.3	\$ 46.1	\$ 46.1	\$ 73	
92	SP0.0	SP0.0	DIV-13	Site Signage	Precise Location Of The Pool On or With The Emergency Phone (Address, or Directions, or GPS Location, or Building Number, as Appropriate (Letter Symbol And Size : Minimum 1- Inch)	1	0%	1	EA	1,625	1.63	\$ 30.2	\$ 49.1	\$ 152.2	\$ 152.2	\$ 201	
93	SP0.0	SP0.0	DIV-13	Site Signage	Hours Of Operation (Letter Symbol And Size : Minimum 1- Inch)	1	0%	1	EA	1,080	1.08	\$ 30.2	\$ 32.7	\$ 119.6	\$ 119.6	\$ 152	
94	SP0.0	SP0.0	DIV-13	Site Signage	Direction To And Location Of emergency Phone If Phone Not Visible In pool yard (Letter Symbol And Size : Minimum 2- Inch)	1	0%	1	EA	0,962	0.96	\$ 30.2	\$ 29.1	\$ 55.0	\$ 55.0	\$ 84	
95	SP0.0	SP0.0	DIV-13	Site Signage	Maximum User Load Limit (Letter Symbol And Size : Minimum 2- Inch)	1	0%	1	EA	0,845	0.85	\$ 30.2	\$ 25.6	\$ 68.8	\$ 68.8	\$ 94	
96	SP0.0	SP0.0	DIV-13	Site Signage	"Pets In The Pool Are Prohibited (Letter Symbol And Size : Minimum 2- Inch)	1	0%	1	EA	1,608	1.61	\$ 30.2	\$ 48.6	\$ 110.1	\$ 110.1	\$ 159	
97	SP0.0	SP0.0	DIV-13	Site Signage	" Do Not Swim If You Have been ill With Diarrhea Within The past 2 Weeks" (Letter Symbol And Size : Minimum 2- Inch)	1	0%	1	EA	1,027	1.03	\$ 30.2	\$ 31.1	\$ 64.5	\$ 64.5	\$ 96	
98	SP0.0	SP0.0	DIV-13	Site Signage	"Changing Diapers Within The Pool Enclosure Is prohibited" (Letter Symbol And Size : Minimum 2- Inch)	1	0%	1	EA	1,625	1.63	\$ 30.2	\$ 49.1	\$ 76.1	\$ 76.1	\$ 125	
99	SP0.0	SP0.0	DIV-13	Site Signage	"Glass Items Are Not Allowed In The Pool Yard" (Letter Symbol And Size : Minimum 2- Inch)	1	0%	1	EA	0,902	0.90	\$ 30.2	\$ 27.3	\$ 46.1	\$ 46.1	\$ 73	
100	SP0.0	SP0.0	DIV-13	Site Signage	"Persons Under The Age Of 14 Must Not Be In The Pool Without Adult Supervision" (Letter Symbol And Size : Minimum 2- Inch)	1	0%	1	EA	0,998	1.00	\$ 30.2	\$ 30.2	\$ 60.3	\$ 60.3	\$ 91	
101	SP0.0	SP0.0	DIV-13	Site Signage	"Extended Breath Holding Activities Are dangerous And prohibited" (Letter Symbol And Size : Minimum 2- Inch)	1	0%	1	EA	1,030	1.03	\$ 30.2	\$ 31.1	\$ 64.7	\$ 64.7	\$ 96	

BIDS ESTIMATING

Client: (Hidden for Privacy)
 Project Name: (Hidden for Privacy)
 Project ID: (Hidden for Privacy)
 Last Updated: 19/02/2021



Website: bidsestimating.com
 Email: info@bidsestimating.com
 Contact: +1 (832) 346 0507

Quantity Takeoff Sheet

Special Construction

ITEM #	REF. SHEET	DETAIL	CSI SECT	Sub Contractor	DESCRIPTION	QTY.	WAST AGE	QTY WITH WASTAG E	UNIT	UNIT LABOR HOURS	TOTAL LABOR HOURS	PER HOUR LABOR RATE	TOTAL LABOR COST	UNIT MATERIAL COST	TOTAL MATERIAL COST	ITEM COST	TRADE COST
102	SP3.0	SP3.0	DIV-13	Site Signage	Statement In Letters At Least 1/2" In Height Stating: "Do Not Start The System After Maintenance Without First Properly Reassembling The Filter And Separate Tank And Opening All Air Release Valve." @ Equipment Room Note: Verify, If Required.	1	0%	1	EA	1.450	1.45	\$ 30.2	\$ 43.9	\$ 81.8	\$ 81.8	\$ 126	
					Joint/Sealant												
103	SP1.0	SP1.0	DIV-13	Joint Sealants	3/4" Wide Expansion Joint- Seal Joint With Self-Levelling Urethane	282	5%	296	LF	0.154	45.60	\$ 49.5	\$ 2,255.4	\$ 0.5	\$ 146.9	\$ 2,402	
					Pool Equipment												
104	SP3.0	SP3.0	DIV-13	Pool	Pool Filtration Pump (3- Hp Pentair "Intelliflo" Variable Speed)	2	0%	2	EA	5.712	11.42	\$ 42.3	\$ 482.9	\$ 1,603.9	\$ 3,207.9	\$ 3,691	
105	SP3.0	SP3.0	DIV-13	Pool	B- High Rate Sand Filter (Pentair Triton C High Capacity- 36" Diameter)	3	0%	3	EA	6.965	20.90	\$ 42.3	\$ 883.3	\$ 2,250.0	\$ 6,750.0	\$ 7,633	
106	SP3.0	SP3.0	DIV-13	Pool	C- Disinfectant (Pebtair Rainbow Model 300-29X)	2	0%	2	EA	1.602	3.20	\$ 42.3	\$ 135.4	\$ 173.9	\$ 347.9	\$ 483	
107	SP3.0	SP3.0	DIV-13	Pool	D- Flow meter Note: See Sheet No. SP3.0 For Additional Information.	1	0%	1	EA	3.065	3.07	\$ 42.3	\$ 129.6	\$ 645.0	\$ 645.0	\$ 775	
					Pool Piping												
108	SP2.0 - SP3.0	SP2.0 - SP3.0	DIV-13	Utilities	1" Water Pipe	20	5%	21	LF	0.347	7.17	\$ 55.7	\$ 399.5	\$ 1.1	\$ 22.1	\$ 422	
109	SP2.0 - SP3.0	SP2.0 - SP3.0	DIV-13	Utilities	6" Skimmer Suct. Header Pipe	44	5%	46	LF	0.788	36.26	\$ 55.7	\$ 2,020.1	\$ 10.9	\$ 501.1	\$ 2,521	
110	SP2.0 - SP3.0	SP2.0 - SP3.0	DIV-13	Utilities	4" Skimmer Suct. Header Pipe	70	5%	74	LF	0.572	42.15	\$ 55.7	\$ 2,348.3	\$ 4.2	\$ 308.6	\$ 2,657	
111	SP2.0 - SP3.0	SP2.0 - SP3.0	DIV-13	Utilities	3" Skimmer Suct. Header Pipe	61	5%	64	LF	0.446	28.72	\$ 55.7	\$ 1,599.9	\$ 3.1	\$ 202.3	\$ 1,802	
112	SP2.0 - SP3.0	SP2.0 - SP3.0	DIV-13	Utilities	2" Skimmer Suct. Header Pipe	172	5%	181	LF	0.405	73.18	\$ 55.7	\$ 4,076.9	\$ 2.1	\$ 378.0	\$ 4,455	
113	SP2.0 - SP3.0	SP2.0 - SP3.0	DIV-13	Utilities	6" Main Drain Suct. Header Pipe	96	5%	101	LF	0.788	79.71	\$ 55.7	\$ 4,441.0	\$ 10.9	\$ 1,101.7	\$ 5,543	
114	SP2.0 - SP3.0	SP2.0 - SP3.0	DIV-13	Utilities	1.5" Trench Drain " Priming" Pipe	8	5%	8	LF	0.383	3.20	\$ 55.7	\$ 178.6	\$ 1.6	\$ 13.1	\$ 192	
115	SP2.0 - SP3.0	SP2.0 - SP3.0	DIV-13	Utilities	6" Filtered Return Header Pipe	30	5%	32	LF	0.788	24.81	\$ 55.7	\$ 1,382.5	\$ 10.9	\$ 343.0	\$ 1,725	
116	SP2.0 - SP3.0	SP2.0 - SP3.0	DIV-13	Utilities	4" Filtered Return Header Pipe	49	5%	51	LF	0.572	29.11	\$ 55.7	\$ 1,621.8	\$ 4.2	\$ 213.1	\$ 1,835	
117	SP2.0 - SP3.0	SP2.0 - SP3.0	DIV-13	Utilities	3" Filtered Return Header Pipe	34	5%	36	LF	0.446	15.99	\$ 55.7	\$ 890.8	\$ 3.1	\$ 112.6	\$ 1,003	
118	SP2.0 - SP3.0	SP2.0 - SP3.0	DIV-13	Utilities	2.5" Filtered Return Header Pipe	68	5%	71	LF	0.414	29.39	\$ 55.7	\$ 1,637.7	\$ 2.6	\$ 185.7	\$ 1,823	
119	SP2.0 - SP3.0	SP2.0 - SP3.0	DIV-13	Utilities	1.5" Filtered Return Header Pipe	140	5%	147	LF	0.383	56.11	\$ 55.7	\$ 3,125.9	\$ 1.6	\$ 230.1	\$ 3,356	
120	SP2.0 - SP3.0	SP2.0 - SP3.0	DIV-13	Utilities	2" Filtered Return Header Pipe	63	5%	66	LF	0.405	26.58	\$ 55.7	\$ 1,481.0	\$ 2.1	\$ 137.3	\$ 1,618	
121	SP2.0 - SP3.0	SP2.0 - SP3.0	DIV-13	Utilities	6" Filtered Manifold Pipe	18	5%	19	LF	0.788	14.79	\$ 55.7	\$ 824.2	\$ 10.9	\$ 204.5	\$ 1,029	\$ 29,981
					Fixture												
122	SP2.0 - SP3.0	SP2.0 - SP3.0	DIV-13	Utilities	Wall Inlet Fitting Body With Adjustable Eyeball Inlet And 3/4" Diameter Orifice	12	0%	12	EA	0.326	3.91	\$ 55.7	\$ 218.0	\$ 6.0	\$ 71.4	\$ 289	
123	SP2.0 - SP3.0	SP2.0 - SP3.0	DIV-13	Utilities	U-3 Commercial Surface Skimmer (Hayward, STA-Rite or Equal)	4	0%	4	EA	1.724	6.90	\$ 55.7	\$ 384.2	\$ 128.2	\$ 512.8	\$ 897	
124	SP2.0 - SP3.0	SP2.0 - SP3.0	DIV-13	Utilities	Adjustable Floor Inlet Fitting, Mount Flush With Tanning Ledge Floor	4	0%	4	EA	0.402	1.61	\$ 55.7	\$ 89.6	\$ 11.0	\$ 43.8	\$ 133	

BIDS ESTIMATING

Client: (Hidden for Privacy)
 Project Name: (Hidden for Privacy)
 Project ID: (Hidden for Privacy)
 Last Updated: 19/02/2021



Website: bidsestimating.com
 Email: info@bidsestimating.com
 Contact: +1 (832) 346 0507

Quantity Takeoff Sheet

Special Construction

ITEM #	REF. SHEET	DETAIL	CSI SECT	Sub Contractor	DESCRIPTION	QTY.	WAST AGE	QTY WITH WASTAG E	UNIT	UNIT LABOR HOURS	TOTAL LABOR HOURS	PER HOUR LABOR RATE	TOTAL LABOR COST	UNIT MATERIAL COST	TOTAL MATERIAL COST	ITEM COST	TRADE COST
125	P2.0 - SP3.0	P2.0 - SP3.0	DIV-13	Utilities	Float Valve Auto-Fill Unit By Pentair; T40FBK (Or Equal); 1" Water Supply	1	0%	1	EA	1.562	1.56	\$ 55.7	\$ 87.0	\$ 138.6	\$ 138.6	\$ 226	
126	P2.0 - SP3.0	P2.0 - SP3.0	DIV-13	Utilities	2.5"x6" Gutter Drain Fitting For Pool Overflow	1	0%	1	EA	0.862	0.86	\$ 55.7	\$ 48.0	\$ 21.0	\$ 21.0	\$ 69	
127	P2.0 - SP3.0	P2.0 - SP3.0	DIV-13	Utilities	Throttling Valves	6	0%	6	EA	1.245	7.47	\$ 55.7	\$ 416.2	\$ 23.2	\$ 139.0	\$ 555	
128	P2.0 - SP3.0	P2.0 - SP3.0	DIV-13	Utilities	1.5" Throttling Valve Inside Trench	1	0%	1	EA	1.958	1.96	\$ 55.7	\$ 109.1	\$ 253.4	\$ 253.4	\$ 362	
129	P2.0 - SP3.0	P2.0 - SP3.0	DIV-13	Utilities	Check Valve	2	0%	2	EA	1.048	2.10	\$ 55.7	\$ 116.7	\$ 36.2	\$ 72.4	\$ 189	
130	P2.0 - SP3.0	P2.0 - SP3.0	DIV-13	Utilities	Shut Off Valve	1	0%	1	EA	1.095	1.10	\$ 55.7	\$ 61.0	\$ 18.8	\$ 18.8	\$ 80	
131	P2.0 - SP3.0	P2.0 - SP3.0	DIV-13	Utilities	Hydrostatic Relief Valve	2	0%	2	EA	0.760	1.52	\$ 55.7	\$ 84.7	\$ 112.0	\$ 224.0	\$ 309	
132	P2.0 - SP3.0	P2.0 - SP3.0	DIV-13	Utilities	Backflow Preventer	1	0%	1	EA	5.184	5.18	\$ 55.7	\$ 288.8	\$ 1,906.2	\$ 1,906.2	\$ 2,195	
133	P2.0 - SP3.0	P2.0 - SP3.0	DIV-13	Utilities	Pool Equipment Subpanel (Verify, If Required)	1	0%	1	EA	5.736	5.74	\$ 55.7	\$ 319.6	\$ 967.0	\$ 967.0	\$ 1,287	
134	P2.0 - SP3.0	P2.0 - SP3.0	DIV-13	Utilities	14"x10" PVC Splash Guard	1	0%	1	EA	0.625	0.63	\$ 55.7	\$ 34.8	\$ 15.9	\$ 15.9	\$ 51	
135	P2.0 - SP3.0	P2.0 - SP3.0	DIV-13	Utilities	Filter Pressure Gauge	1	0%	1	EA	1.248	1.25	\$ 55.7	\$ 69.5	\$ 48.5	\$ 48.5	\$ 118	
136	P2.0 - SP3.0	P2.0 - SP3.0	DIV-13	Utilities	Filter Outlet Pressure Gauge	1	0%	1	EA	1.248	1.25	\$ 55.7	\$ 69.5	\$ 48.5	\$ 48.5	\$ 118	
137	P2.0 - SP3.0	P2.0 - SP3.0	DIV-13	Utilities	Pump Discharge/Filter Inlet pressure Gauge	1	0%	1	EA	4.512	4.51	\$ 55.7	\$ 251.4	\$ 1,585.5	\$ 1,585.5	\$ 1,837	
138	P2.0 - SP3.0	P2.0 - SP3.0	DIV-13	Utilities	Suction (Vacuum) Gauge	1	0%	1	EA	1.312	1.31	\$ 55.7	\$ 73.1	\$ 95.0	\$ 95.0	\$ 168	
139	P2.0 - SP3.0	P2.0 - SP3.0	DIV-13	Utilities	Ball Valve	2	0%	2	EA	0.956	1.91	\$ 55.7	\$ 106.5	\$ 34.9	\$ 69.7	\$ 176	
140	P2.0 - SP3.0	P2.0 - SP3.0	DIV-13	Utilities	Vacuum Breaker Hose Bib	33	0%	33	EA	0.948	31.27	\$ 55.7	\$ 1,742.0	\$ 7.0	\$ 230.3	\$ 1,972	
141	P2.0 - SP3.0	P2.0 - SP3.0	DIV-13	Utilities	32"x4" VGB-Compliant Channel Drains Aquastar (Or Equal); 122 GPM @ 1.5 FPS (Model# 32CDAVXXX)	2	0%	2	EA	2.125	4.25	\$ 55.7	\$ 236.8	\$ 190.0	\$ 380.0	\$ 617	
142	SP3.0	SP3.0	DIV-13	Utilities	Eccentric Reducers	2	0%	2	EA	0.421	0.84	\$ 55.7	\$ 46.9	\$ 42.1	\$ 84.1	\$ 131	
143	SP3.0	SP3.0	DIV-13	Utilities	Concentric Reducers	2	0%	2	EA	0.421	0.84	\$ 55.7	\$ 46.9	\$ 42.1	\$ 84.1	\$ 131	
144	SP3.0	SP3.0	DIV-13	Utilities	Pump Motor Starters	2	0%	2	EA	4.312	8.62	\$ 55.7	\$ 480.5	\$ 1,184.8	\$ 2,369.6	\$ 2,850	
Pool Electrical																	
145	SP4.0	SP4.0	DIV-13	Site Electrical	Underwater Pool Light <i>Note: Verify If Required</i>	1	0%	1	EA	3.104	3.10	\$ 52.7	\$ 163.5	\$ 777.0	\$ 777.0	\$ 940	
Misc. Pool Items																	
146	SP1.0	SP1.0	DIV-13	Pool	6'-0" Wide x 5'-0" High Pool Yard Gate (Self Closing, Self-Latching And Lockable- Per Texas Department Of Health Code)	2	0%	2	EA	6.784	13.57	\$ 42.3	\$ 573.6	\$ 2,713.6	\$ 5,427.1	\$ 6,001	
147	SP1.0	SP1.0	DIV-13	Pool	4'-0" Wide x 5'-0" High Pool Yard Gate (Self Closing, Self-Latching And Lockable- Per Texas Department Of Health Code)	5	0%	5	EA	5.065	25.33	\$ 42.3	\$ 1,070.7	\$ 1,809.0	\$ 9,045.2	\$ 10,116	
148	SP1.0	SP1.0	DIV-13	Pool	911 Emergency Call Box <i>Note: Item Is Shown Outside The Pool Enclosure, Please Verify If Required.</i>	1	0%	1	EA	1.612	1.61	\$ 42.3	\$ 68.1	\$ 116.0	\$ 116.0	\$ 184	
149	SP1.0	SP1.0	DIV-13	Pool	Drinking Fountain <i>Note: Item Is Shown Outside The Pool Enclosure, Please Verify If Required.</i>	2	0%	2	EA	6.138	12.28	\$ 42.3	\$ 519.0	\$ 700.9	\$ 1,401.9	\$ 1,921	

BIDS ESTIMATING

Client: (Hidden for Privacy)
 Project Name: (Hidden for Privacy)
 Project ID: (Hidden for Privacy)
 Last Updated: 19/02/2021

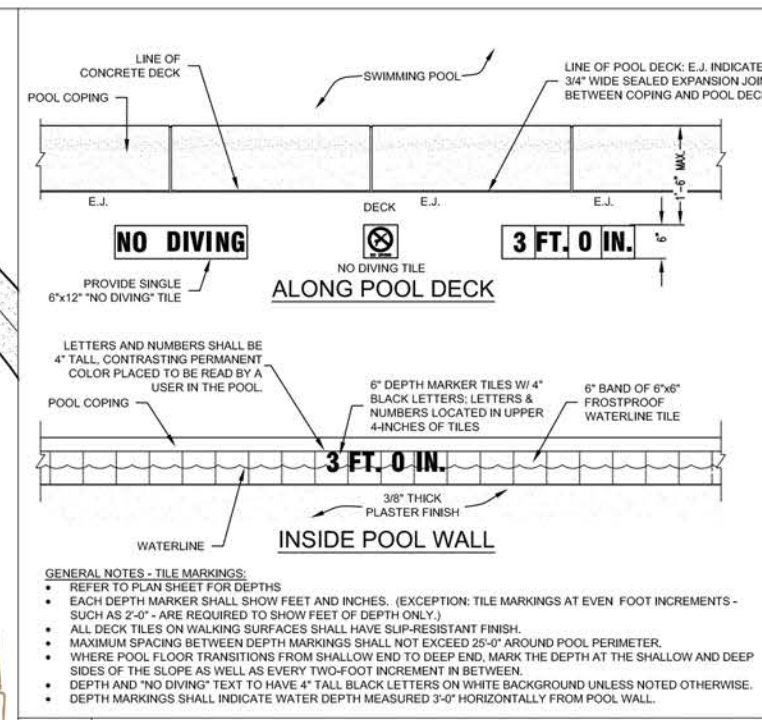
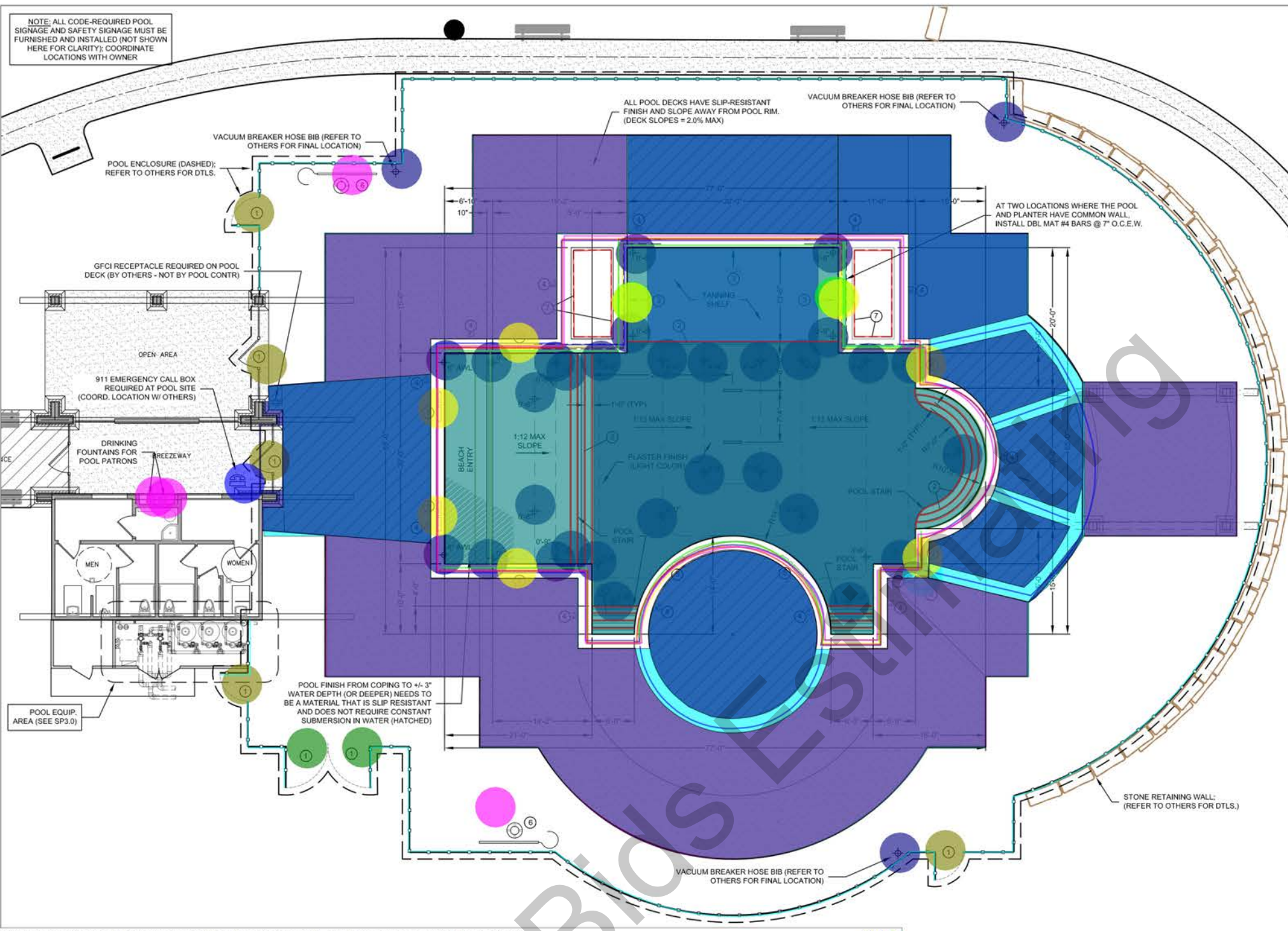


Website: bidsestimating.com
 Email: info@bidsestimating.com
 Contact: +1 (832) 346 0507

Quantity Takeoff Sheet

Special Construction

ITEM #	REF. SHEET	DETAIL	CSI SECT	Sub Contractor	DESCRIPTION	QTY.	WAST AGE	QTY WITH WASTAG E	UNIT	UNIT LABOR HOURS	TOTAL LABOR HOURS	PER HOUR LABOR RATE	TOTAL LABOR COST	UNIT MATERIAL COST	TOTAL MATERIAL COST	ITEM COST	TRADE COST	
150	SP1.0	SP1.0	DIV-13	Pool	Shepherd's Crook And US Coast Guard Approved Ring Buoy	2	0%	2	EA	0.320	0.64	\$ 42.3	\$ 27.1	\$ 66.2	\$ 132.3	\$ 159		
151	SP1.0	SP1.0	DIV-13	Pool	ADA-Compliant Lift Chair- Install Lift Chair Anchor	1	0%	1	EA	7.690	7.69	\$ 42.3	\$ 325.1	\$ 3,799.0	\$ 3,799.0	\$ 4,124		
152	SP1.0	SP1.0	DIV-13	Pool	Install Impervious Liner	71	5%	74	LF	0.006	0.44	\$ 42.3	\$ 18.8	\$ 0.3	\$ 25.3	\$ 44		
153	SP1.0	SP1.0	DIV-13	Pool	Install French Drain System	71	5%	74	LF	0.225	16.67	\$ 42.3	\$ 704.7	\$ 5.3	\$ 392.5	\$ 1,097		
154	SP1.0	SP1.0	DIV-13	Pool	3'-0" Wide Parallel Grating	30	5%	32	LF	1.058	33.33	\$ 42.3	\$ 1,408.9	\$ 418.2	\$ 13,172.0	\$ 14,581		
155	SP1.0	SP1.0	DIV-13	Pool	Pool Fence-4' H Note: Material Not Given, Please Verify	426	5%	447	LF	0.360	161.03	\$ 42.3	\$ 6,807.3	\$ 4.5	\$ 1,999.4	\$ 8,807		
					Trenches													
156	SP1.0	SP1.0	DIV-13	Earth worker	Cut	491	5%	516	CY	0.300	154.67	\$ 83.6	\$ 12,925.4		\$ -	\$ 12,925		
157	SP1.0	SP1.0	DIV-13	Earth worker	Stone Fill	32	5%	34	CY	1.500	50.40	\$ 83.6	\$ 4,211.9	\$ 32.5	\$ 1,092.0	\$ 5,304		
158	SP1.0	SP1.0	DIV-13	Earth worker	Native Fill	160	5%	168	CY	0.200	33.60	\$ 83.6	\$ 2,808.0		\$ -	\$ 2,808		
159	SP1.0	SP1.0	DIV-13	Earth worker	Soil Exported	331	5%	348	CY	0.150	52.13	\$ 83.6	\$ 4,356.7		\$ -	\$ 4,357		
SUB TOTAL											Total Lab. Hours =	5,585	Total Lab \$	189,908	Total Mat.	\$ 155,899	\$ 375,788	\$ 324,904
MATERIAL TAX												9.5%				\$ 14,810	\$ 14,810	\$ 14,810
OVERHEAD AND P												25%	\$	47,477		\$ 38,975	\$ 86,452	\$ 86,452
TOTAL BASE BID													\$	237,385		\$ 209,684	\$ 477,050	\$ 426,166



2 DEPTH & NO DIVING MARKINGS DETAIL

0 3' 6' 9' 12'

SCALE: 3/4"=1'-0"

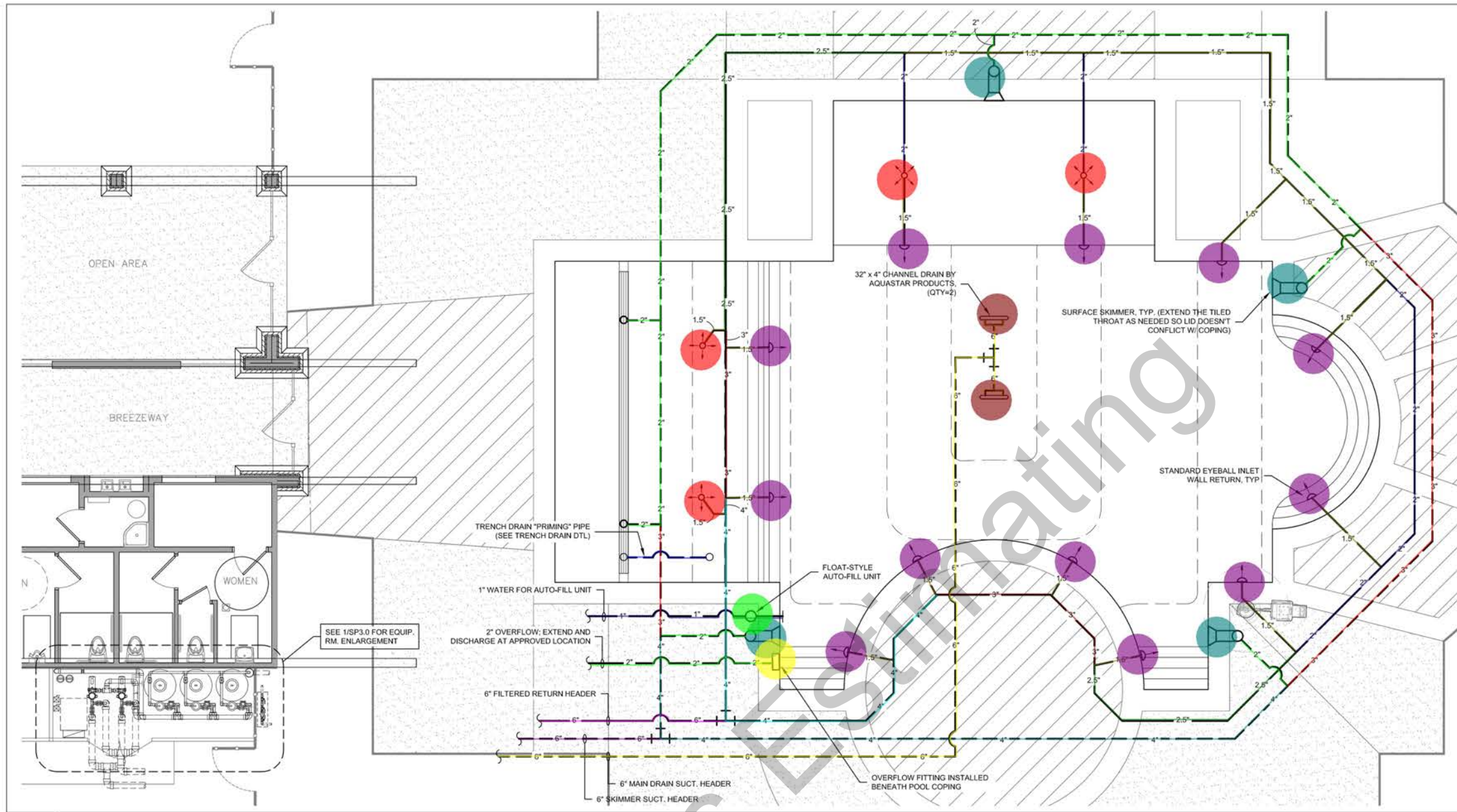
- 6'-0" Wide x 5'-0" High Pool Yard Gate (Self Closing, Self-Latching And Locable- Per Texas Department Of Health Code)
- 4'-0" Wide x 5'-0" High Pool Yard Gate (Self Closing, Self-Latching And Locable- Per Texas Department Of Health Code)
- Vacuum Breaker Hose Bib
- Slip-Resistant Finish
- Plaster Finish (Light Color)
- 2" Non-Slip Tile Delineator Band
- 6"x24" Non Diving Tiles
- 6"x24" Depth Marker Tile W.4" Black Letters
- pool Coping
- Shepherd's Crook And US Coast Guard Approved Ring Buoy
- ADA-Compliant Lift Chair- Install Lift Chair Anchor
- 13.5 SF Beach Entry Concrete Slab, Reinforced
- 4.7 SF Pool Stairs, Reinforced.
- 6.4 SF Pool Stairs, Reinforced.
- 1.7 SF Pool Beam, Reinforced
- 8" Thick Tanning Shelf Slab, Reinforced
- 2.6 SF Pool Wall, Reinforced
- 2.3 SF Pool Wall, Reinforced
- 8" Thick Pool Slab Reinforced
- 1.3 SF Concrete Stairs, Reinforced
- Install Impervious Liner And French Drain System
- 6 SF Planter Wall, Reinforced
- 0.3 SF Slab Edge
- 5" Pool Deck Slab Reinforced
- 6" Band Of 6"x6" Frostproof Waterline Tile
- 3'-0" Wide Parallel Grating
- 911 Emergency Call Box
- Drinking Fountain
- Pool Fence
- Misc. Pool Finish
- 3/4" Wide Expansion Joint (Seal Joint With Self-Leveling Urethane)

POOL DATA	
POOL VOLUME	33.0 EA
POOL SURFACE AREA	3472.6 SQ FT
POOL PERIMETER	2704.1 SQ FT
POOL DEPTH	277.4 FT
POOL FINISH	2.0 EA
POOL COPING	8.0 EA
POOL STAIRS	461.7 FT
POOL BEAM	2.0 EA
POOL WALL	1.0 EA
POOL STAIRS	29.8 FT
POOL STAIRS	30.0 FT
POOL STAIRS	31.9 FT
POOL STAIRS	213.6 FT
POOL STAIRS	332.2 SQ FT
POOL STAIRS	29.9 FT
POOL STAIRS	182.3 FT
POOL STAIRS	1534.8 SQ FT
POOL STAIRS	49.4 FT
POOL STAIRS	70.6 FT
POOL STAIRS	30.8 FT
POOL STAIRS	280.5 FT
POOL STAIRS	5976.6 SQ FT
POOL STAIRS	227.9 FT
POOL STAIRS	30.2 FT
POOL STAIRS	1.0 EA
POOL STAIRS	2.0 EA
POOL STAIRS	426.0 FT
POOL STAIRS	2276.8 SQ FT
POOL STAIRS	281.2 FT

0 2' 4' 6' 8' 10'

SCALE: 1/8"=1'-0"

3 NOT USED

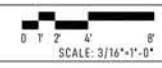
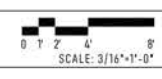


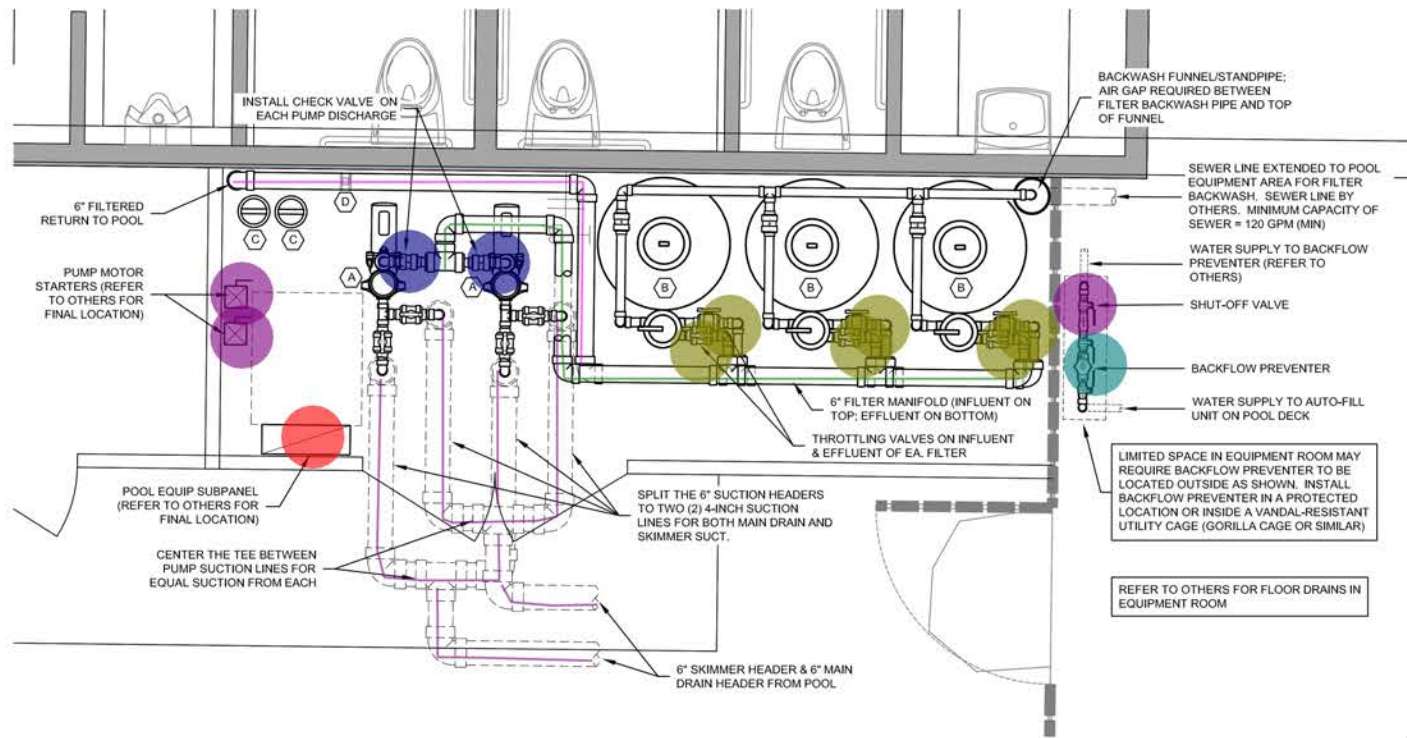
SYMBOL LEGEND	
ITEM	DESCRIPTION
	U-3 COMMERCIAL SURFACE SKIMMER (HAYWARD, STA-RITE OR EQUAL)
	32"x4" VGB-COMPLIANT CHANNEL DRAINS BY AQUASTAR (OR EQUAL); 122 GPM MAX FLOW THROUGH DRAIN AT 1.5 FPS. (QTY=2) MODEL# 32CDAVXXX (XXX = COLOR CODE)
	WALL INLET FITTING BODY WITH ADJUSTABLE EYEBALL INLET AND 3/4" DIAMETER ORIFICE
	ADJUSTABLE FLOOR INLET FITTING; MOUNT FLUSH WITH TANNING LEDGE FLOOR
	2.5"x6" GUTTER DRAIN FITTING FOR POOL OVERFLOW; INSTALL FITTING IN WATERLINE TILE BENEATH POOL COPING
	FLOAT VALVE AUTO-FILL UNIT BY PENTAIR; T40FBK (OR EQUAL); 1" WATER SUPPLY;

- LIGHTING NOTES:**
- IF POOL WILL BE USED AFTER DARK, THE SITE MUST BE ILLUMINATED TO PROVIDE 10 HORIZONTAL FOOT-CANDLES (MIN) AT ALL WATER SURFACES AND POOL DECKS.
 - EMERGENCY LIGHTING: FOR POOLS THAT WILL BE USED AFTER DARK, EMERGENCY LIGHTING MUST BE PROVIDED ALONG THE EGRESS ROUTE FROM THE POOL(S) TO THE EXIT GATE OF THE POOL YARD.
 - EMERGENCY LIGHTING SHALL BE ARRANGED TO PROVIDE INITIAL ILLUMINATION NOT LESS THAN 0.1 FOOT-CANDLE AT ANY POINT ON THE WATER SURFACE OR ALONG THE POOL DECK, AND NOT LESS THAN AN AVERAGE OF 1.0 FOOT-CANDLE. AT THE END OF THE EMERGENCY LIGHTING TIME DURATION, THE ILLUMINATION LEVEL SHALL NOT BE LESS THAN 0.06 FOOT-CANDLE AT ANY POINT ON THE WATER SURFACE OR POOL DECK, AND NOT LESS THAN AN AVERAGE OF 0.6 FOOT-CANDLE.
 - PER TAC 265.195(e), EACH ELECTRICAL LINE TO AN UNDERWATER LIGHT IN A POOL OR SPA SHALL BE PROTECTED WITH A GFCI LOCATED IN THE CIRCUIT BREAKER FOR THE LIGHT AT THE BREAKER BOX OR IN AN OUTLET THROUGH WHICH THE POWER FOR THE LIGHT PASSES.

- SWIMMING POOL PLUMBING PLAN**
- 1" Water Pipe
 - 6" Skimmer Suct. Header Pipe
 - 4" Skimmer Suct. Header Pipe
 - 3" Skimmer Suct. Header Pipe
 - 2" Skimmer Suct. Header Pipe
 - 6" Main Drain Suct. Header Pipe
 - 1.5" Trench Drain " Priming" Pipe
 - 6" Filtered Return Header Pipe
 - 4" Filtered Return Header Pipe
 - 3" Filtered Return Header Pipe
 - 2.5" Filtered Return Header Pipe
 - 1.5" Filtered Return Header Pipe
 - 2" Filtered Return Header Pipe
 - Wall Inlet Fitting Body With Adjustable Eyeball Inlet And 3/4" Diameter Orifice
 - U-3 Commercial Surface Skimmer (Hayward, STA-Rite or Equal)
 - Adjustable Floor Inlet Fitting, Mount Flush With Tanning Ledge Floor
 - Float Valve Auto-Fill Unit By Pentair; T40FBK (Or Equal); 1" Water Supply
 - 2.5"x6" Gutter Drain Fitting For Pool Overflow
 - 32"x4" VGB-Compliant Channel Drains Aquastar (Or Equal); 122 GPM @ 1.5 FPS (Model# 32C...

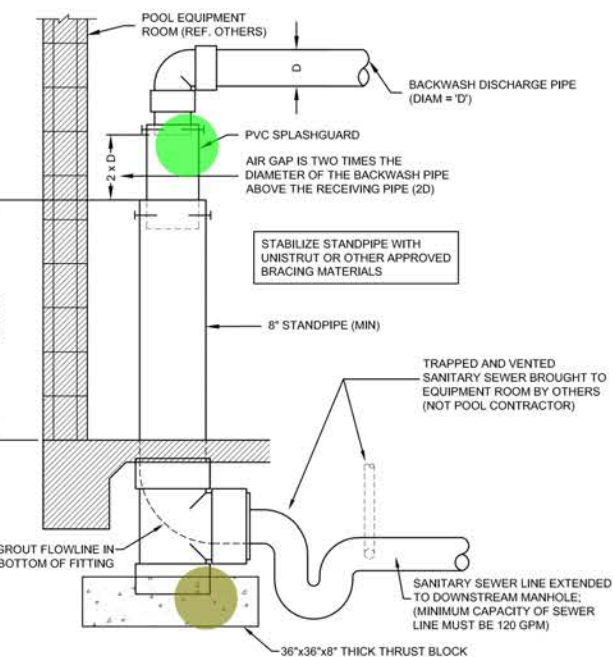
- 19.7 FT
- 13.3 FT
- 70.2 FT
- 61.4 FT
- 172.1 FT
- 96.4 FT
- 8.0 FT
- 18.0 FT
- 48.5 FT
- 34.2 FT
- 67.6 FT
- 139.7 FT
- 62.5 FT
- 12.0 EA
- 4.0 EA
- 4.0 EA
- 1.0 EA
- 1.0 EA
- 2.0 EA



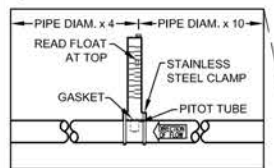


EQUIPMENT SCHEDULE			
ID	DESCRIPTION	QTY	ADDITIONAL COMMENTS
A	POOL FILTRATION PUMP	2	3-HP PENTAIR "INTELLIFLO" VARIABLE SPEED, SELF-PRIMING PUMP WITH INTEGRAL STRAINER; 230 VOLT SINGLE PHASE MOTOR; 16.0 FULL LOAD AMPS; SET PUMP FLOW TO 125 GPM
B	HIGH RATE SAND FILTER	3	PENTAIR TRITON C HIGH CAPACITY SAND FILTER; 36" DIAMETER; 7.06 SQ.FT. EFFECTIVE FILTRATION AREA; 141 GPM MAX FLOW; FURNISH WITH FULL FLOW MULTI-PORT DIAL VALVE
C	DISINFECTANT	2	PENTAIR RAINBOW MODEL 300-29X EROSION-STYLE TABLET CHLORINATOR; FURNISH WITH CHECK VALVES AND INJECTOR FITTINGS
D	FLOWMETER		MUST BE CAPABLE OF MEASURING 1.5 TIMES THE DESIGN FLOW AND WITHIN 10% ACCURACY OF ACTUAL FLOW

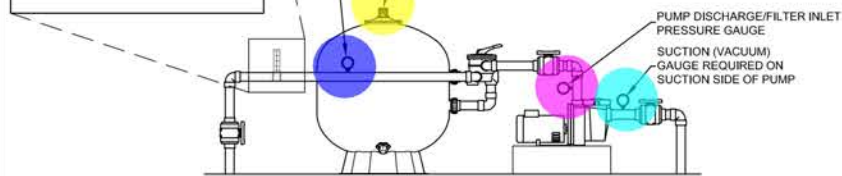
1 EQUIPMENT ROOM LAYOUT



NOTE: DIMENSIONS SHOWN INDICATE THE MINIMUM DIMENSIONS OF STRAIGHT HORIZONTAL PIPING REQUIRED BEFORE A FITTING, TAP, ETC. CAN BE INSTALLED IN THE PIPE.



NOTE: GAUGES MUST BE INSTALLED SO THEY DO NOT CONFLICT WITH REMOVING STRAINER LIDS, OPENING OR CLOSING VALVES, ETC. INSTALL GAUGES PER MANUFACTURER'S INSTRUCTIONS.



3 TYP. INDIRECT WASTE DETAIL



4 GAUGES & FLOW METER DIAGRAM

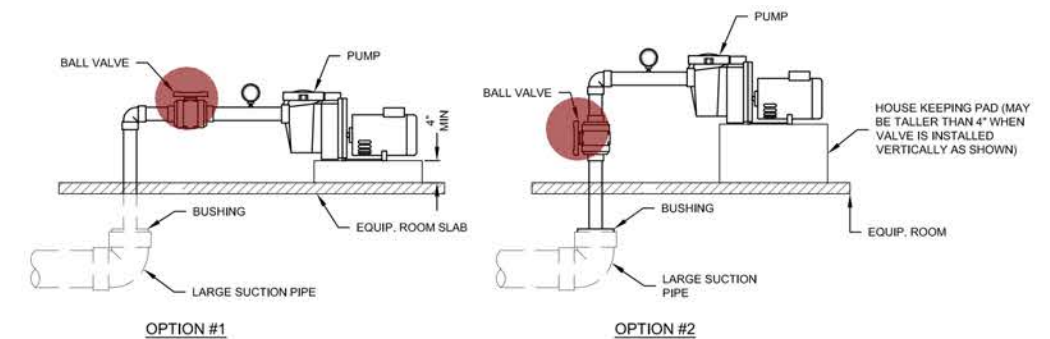


EQUIPMENT ROOM NOTES

- EQUIPMENT MAY BE REARRANGED SLIGHTLY FROM WHAT IS SHOWN ON THIS DRAWING TO PROVIDE EASE OF MAINTENANCE AND OPERATION (FIELD LOCATE).
- EQUIPMENT AREA SLAB NEEDS TO BE SLOPED TO DRAIN. (REFER TO OTHERS FOR SLAB DRAINAGE).
- REFER TO OTHERS FOR FLOOR DRAINS IN POOL EQUIPMENT ROOM.
- POOL WATER pH CONTROL TO BE TESTED AND ADJUSTED BY A CERTIFIED POOL OPERATOR (CPO) IN ACCORDANCE TO 25 TAC 265.206(d)
- THE FOLLOWING STATEMENT SHALL BE POSTED IN LETTERS AT LEAST 1/2 INCH IN HEIGHT, IN A CONSPICUOUS LOCATION, AND WITHIN THE AREAS OF THE AIR RELEASE FOR PRESSURE-TYPE FILTERS: "DO NOT START THE SYSTEM AFTER MAINTENANCE WITHOUT FIRST PROPERLY REASSEMBLING THE FILTER AND SEPARATION TANK AND OPENING ALL AIR RELEASE VALVES."
- IN ORDER TO ENSURE PUMP WILL PRIME, THE PUMP MUST BE INSTALLED SO THAT THE SUCTION PIPE IS NO HIGHER THAN 4-FEET ABOVE THE NORMAL WATER LEVEL IN THE POOL.
- REDUCERS INSTALLED AT SUCTION SIDES OF PUMPS SHOWN SHALL BE ECCENTRIC REDUCERS. REDUCERS ON DISCHARGE SIDES OF PUMPS SHALL BE CONCENTRIC REDUCERS.
- ALL POOL PUMP MOTORS CONNECT TO 120 VOLT THROUGH 240 VOLT SINGLE PHASE CIRCUITS. SHALL BE PROVIDED WITH GROUND FAULT CIRCUIT INTERRUPTER (GFCI) PROTECTION PER ARTICLE 680.21(C) N.E.C.
- ELECTRICAL DISCONNECTS FOR POOLS AND SPAS INTENDED TO PROTECT SERVICE PERSONNEL SHALL BE ACCESSIBLE TO SERVICE PERSONNEL, LOCATED WITHIN SIGHT OF THE POOL AND SPA EQUIPMENT AND LOCATED AT LEAST 5 FEET AWAY FROM THE INSIDE WALLS OF A POOL OR SPA. EACH DISCONNECTING MEANS SHALL DISCONNECT ALL UNGROUNDED CONDUCTORS TO THE EQUIPMENT IT SERVES. IF ELECTRICITY TO EQUIPMENT IS SUPPLIED THROUGH A LINE THAT PLUGS INTO AN OUTLET AND IF THE LINE MAY BE DISCONNECTED BY REMOVING THE PLUG FROM THE OUTLET, A SEPARATE DISCONNECT SWITCH IS NOT REQUIRED FOR THAT EQUIPMENT.
- RPZ LOCATION MAY VARY (SHOWN HERE FOR CLARITY) REFER MEP ENGINEER. INSTALL RPZ IN A LOCATION THAT PROVIDES ACCESS FOR MAINTENANCE (FIELD LOCATE).
- HOSE BIB (IF DESIRED BY OWNER) MAY BE INSTALLED IN POOL EQUIPMENT AREA (COORDINATE WITH OWNER).
- ELECTRICAL CONDUIT SHALL NOT ENTER OR PASS THROUGH AN INTERIOR CHEMICAL STORAGE SPACE, EXCEPT AS REQUIRED TO SERVICE DEVICES INTEGRAL TO THE FUNCTION OF THE ROOM, SUCH AS PUMPS, VESSELS, CONTROLS, LIGHTING, AND SAFETY DEVICES.
- LAMPS, INCLUDING FLUORESCENT TUBES, INSTALLED IN INTERIOR CHEMICAL STORAGE SPACES SHALL BE PROTECTED AGAINST BREAKAGE WITH A LENS OR OTHER COVER, OR OTHERWISE PROTECTED AGAINST RELEASE OF HOT MATERIALS.
- WHERE REQUIRED, THE ELECTRICAL CONDUIT IN AN INTERIOR CHEMICAL STORAGE SPACE SHALL BE SEALED AND MADE OF MATERIALS THAT WILL NOT INTERACT WITH ANY

- Pool Filtration Pump (3- Hp Pentair "Intelliflo" Variable Speed)
- B- High Rate Sand Filter (Pentair Triton C High Capacity- 36" Diameter)
- C- Disinfectant (Pentair Rainbow Model 300-29X)
- D- Flowmeter
- 6" Filtered Manifold Pipe
- 6" Skimmer Suct. Header Pipe
- 6" Filtered Return Header Pipe
- Throttling Valves
- Check Valve
- Shut Off Valve
- Backflow Preventor
- Pool Equipment Subpanel (Verify, If Required)
- 14"x10" PVC Splash Guard
- Filter Pressure Gauge
- Filter Outlet Pressure Gauge
- Pump Discharge/Filter Inlet pressure Gauge
- Suction (Vacuum) Gauge
- Ball Valve
- 36"x36"x8" Thick Thrust Block
- Pump Motor Starter

5 PUMP PLUMBING DIAGRAM



5 PUMP PLUMBING DIAGRAM

