

# BIDS ESTIMATING

Client: (Hidden for Privacy)  
 Project Name: (Hidden for Privacy)  
 Project ID: (Hidden for Privacy)  
 Last Updated: 05/12/2021



Website: bidsestimating.com  
 Email: info@bidsestimating.com  
 Contact: +1 (832) 346 0507

## Quantity Takeoff Sheet

### Plumbing

ITEM #	REF. SHEET	DETAIL	CSI SECT	Sub Contractor	DESCRIPTION	QTY.	WAST AGE	QTY WITH WASTAG E	UNIT	UNIT LABOR HOURS	TOTAL LABOR HOURS	PER HOUR LABOR RATE	TOTAL LABOR COST	UNIT MATERIAL COST	TOTAL MATERIAL COST	ITEM COST	TRADE COST
<b>\$ 19,918</b>																	
<b>Water</b>																	
<b>Water Pipes (Pipes Dia and Lengths Assumed, Please Verify If Required)</b>																	
1	A1.1, A1.2	A1.1, A1.2	DIV-22	Plumber	(1" Dia) Cold Water Pipe	115	5%	121	LF	0.222	26.84	\$ 51.0	\$ 1,367.8	\$ 5.8	\$ 698.2	\$ 2,066	
2	A1.1, A1.2	A1.1, A1.2	DIV-22	Plumber	(1/2" Dia) Cold Water Pipe	328	5%	345	LF	0.138	47.58	\$ 51.0	\$ 2,424.7	\$ 2.9	\$ 995.5	\$ 3,420	
3	A1.1, A1.2	A1.1, A1.2	DIV-22	Plumber	(1-1/4" Dia) Cold Water Pipe	73	5%	77	LF	0.277	21.25	\$ 51.0	\$ 1,082.8	\$ 7.2	\$ 553.7	\$ 1,636	
4	A1.1, A1.2	A1.1, A1.2	DIV-22	Plumber	(3/4" Dia) Cold Water Pipe	264	5%	277	LF	0.165	45.77	\$ 51.0	\$ 2,332.3	\$ 4.3	\$ 1,201.4	\$ 3,534	
5	A1.1, A1.2	A1.1, A1.2	DIV-22	Plumber	(1" Dia) Hot Water Pipe	60	5%	63	LF	0.222	14.08	\$ 51.0	\$ 717.5	\$ 5.8	\$ 366.3	\$ 1,084	
6	A1.1, A1.2	A1.1, A1.2	DIV-22	Plumber	(1/2" Dia) Hot Water Pipe	263	5%	276	LF	0.138	38.07	\$ 51.0	\$ 1,940.2	\$ 2.9	\$ 796.6	\$ 2,737	
7	A1.1, A1.2	A1.1, A1.2	DIV-22	Plumber	(1-1/4" Dia) Hot Water Pipe	74	5%	78	LF	0.277	21.52	\$ 51.0	\$ 1,096.7	\$ 7.2	\$ 560.8	\$ 1,658	
8	A1.1, A1.2	A1.1, A1.2	DIV-22	Plumber	(3/4" Dia) Hot Water Pipe	283	5%	297	LF	0.165	49.00	\$ 51.0	\$ 2,497.0	\$ 4.3	\$ 1,286.2	\$ 3,783	
<b>Note: All Water Pipes are PEX.</b>																	
9	A1.1, A1.2		DIV-22	Plumber	1-1/2" Thick Preformed Fiberglass insulation Insulation assumed for water pipes, please confirm if required.	1,461	5%	1,534	LF	0.120	184.09	\$ 51.0	\$ 9,381.3	\$ 2.9	\$ 4,522.4	\$ 13,904	
<b>Sanitary</b>																	
<b>Sanitary Pipes (Pipes Dia and Lengths Assumed, Please Verify If Required)</b>																	
10	A1.1, A1.2	A1.1, A1.2	DIV-22	Plumber	(2" Dia) Sanitary Pipe	281	5%	295	LF	0.180	53.14	\$ 51.0	\$ 2,708.0	\$ 2.1	\$ 617.6	\$ 3,326	
11	A1.1, A1.2	A1.1, A1.2	DIV-22	Plumber	(3" Dia) Sanitary Pipe	192	5%	201	LF	0.198	39.88	\$ 51.0	\$ 2,032.2	\$ 3.1	\$ 632.0	\$ 2,664	
12	A1.1, A1.2	A1.1, A1.2	DIV-22	Plumber	(4" Dia) Sanitary Pipe	171	5%	180	LF	0.216	38.87	\$ 51.0	\$ 1,980.8	\$ 4.2	\$ 752.9	\$ 2,734	
13	A1.1, A1.2	A1.1, A1.2	DIV-22	Plumber	(2" Dia) Vent Pipe	416	5%	437	LF	0.180	78.67	\$ 51.0	\$ 4,009.1	\$ 2.1	\$ 914.3	\$ 4,923	
<b>Note: All Sanitary Pipes are PVC.</b>																	
<b>Misc.</b>																	
14	A1.2	A1.2	DIV-22	Plumber	Vent Pipe Cap	2	0%	2	EA	0.265	0.53	\$ 51.0	\$ 27.0	\$ 16.4	\$ 32.8	\$ 60	
<b>Plumbing Fixtures (Provided By Owner, Installation By GC)</b>																	
15	A1.1, A1.2	A1.1, A1.2	DIV-22	Plumber	Water Closet	8	0%	8	EA	5.304	42.43	\$ 51.0	\$ 2,162.4		\$ -	\$ 2,162	
16	A1.1, A1.2	A1.1, A1.2	DIV-22	Plumber	Lavatory	10	0%	10	EA	3.732	37.32	\$ 51.0	\$ 1,901.9		\$ -	\$ 1,902	
17	A1.2	A1.2	DIV-22	Plumber	Lavatory (If Required)	2	0%	2	EA	3.732	7.46	\$ 51.0	\$ 380.4		\$ -	\$ 380	
18	A1.1	A1.1	DIV-22	Plumber	Laundry Sink	1	0%	1	EA	3.000	3.00	\$ 51.0	\$ 152.9		\$ -	\$ 153	
19	A1.2	A1.2	DIV-22	Plumber	Laundry Tub	1	0%	1	EA	7.800	7.80	\$ 51.0	\$ 397.5		\$ -	\$ 397	
20	A1.1	A1.1	DIV-22	Plumber	Urinal @ M. Bath (Assumed, Please Verify Fixture Type)	1	0%	1	EA	6.627	6.63	\$ 51.0	\$ 337.7		\$ -	\$ 338	
21	A1.1	A1.1	DIV-22	Plumber	Sink W/ Dispenser	1	0%	1	EA	6.152	6.15	\$ 51.0	\$ 313.5		\$ -	\$ 314	
22	A1.1, A1.2	A1.1, A1.2	DIV-22	Plumber	Bar Sink	3	0%	3	EA	3.900	11.70	\$ 51.0	\$ 596.2		\$ -	\$ 596	
23	A1.1	A1.1	DIV-22	Plumber	Shower Drain	1	0%	1	EA	2.376	2.38	\$ 51.0	\$ 121.1		\$ -	\$ 121	
24	A1.1, A1.2	A1.1, A1.2	DIV-22	Plumber	(2'-10" X 5'-10") Standing Free Tub	2	0%	2	EA	7.400	14.80	\$ 51.0	\$ 754.2	\$ 2,980.6	\$ 5,961.2	\$ 6,715	
25	A1.1	A1.1	DIV-22	Plumber	(3'-0" X 5'-2") Shower Pan	1	0%	1	EA	1.971	1.97	\$ 51.0	\$ 100.4	\$ 205.3	\$ 205.3	\$ 306	

# BIDS ESTIMATING

Client: (Hidden for Privacy)  
 Project Name: (Hidden for Privacy)  
 Project ID: (Hidden for Privacy)  
 Last Updated: 05/12/2021

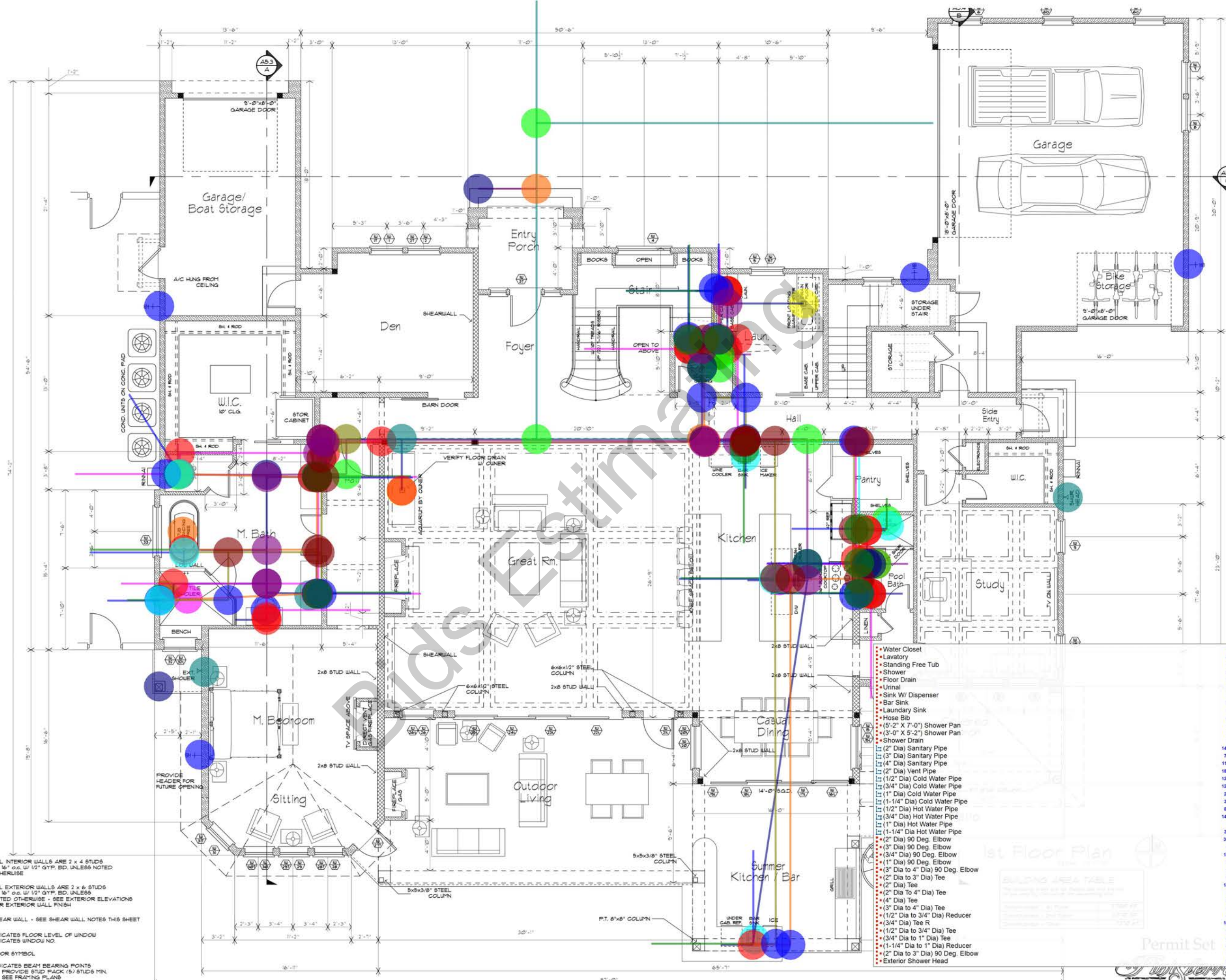


Website: bidsestimating.com  
 Email: info@bidsestimating.com  
 Contact: +1 (832) 346 0507

## Quantity Takeoff Sheet

### Plumbing

ITEM #	REF. SHEET	DETAIL	CSI SECT	Sub Contractor	DESCRIPTION	QTY.	WAST AGE	QTY WITH WASTAGE	UNIT	UNIT LABOR HOURS	TOTAL LABOR HOURS	PER HOUR LABOR RATE	TOTAL LABOR COST	UNIT MATERIAL COST	TOTAL MATERIAL COST	ITEM COST	TRADE COST		
26	A1.1	A1.1	DIV-22	Plumber	(5'-2" X 7'-0") Shower Pan	1	0%	1	EA	3.449	3.45	\$ 51.0	\$ 175.8	\$ 479.1	\$ 479.1	\$ 655			
27	A1.2	A1.2	DIV-22	Plumber	(3'-0" X 5'-0") Shower Pan	2	0%	2	EA	1.907	3.81	\$ 51.0	\$ 194.4	\$ 198.7	\$ 397.4	\$ 592			
28	A1.2	A1.2	DIV-22	Plumber	(3'-0" X 5'-8") Shower Pan	1	0%	1	EA	2.161	2.16	\$ 51.0	\$ 110.1	\$ 225.2	\$ 225.2	\$ 335			
29	A1.2	A1.2	DIV-22	Plumber	(5'-4" X 4'-2") Shower Pan	1	0%	1	EA	2.472	2.47	\$ 51.0	\$ 126.0	\$ 294.4	\$ 294.4	\$ 420			
30	A1.1, A1.2	A1.1, A1.2	DIV-22	Plumber	Faucets	17	0%	17	EA	1.564	26.59	\$ 51.0	\$ 1,355.0	\$ 178.8	\$ 3,039.4	\$ 4,394			
31	A1.1, A1.2	A1.1, A1.2	DIV-22	Plumber	Shower Head	8	0%	8	EA	2.120	16.96	\$ 51.0	\$ 864.3	\$ 84.8	\$ 678.1	\$ 1,542			
32	A1.1, A1.2	A1.1, A1.2	DIV-22	Plumber	Exterior Shower Head	2	0%	2	EA	3.525	7.05	\$ 51.0	\$ 359.3	\$ 349.0	\$ 698.0	\$ 1,057			
33	A1.1	A1.1	DIV-22	Plumber	Floor Drain	2	0%	2	EA	1.854	3.71	\$ 51.0	\$ 189.0	\$ 47.2	\$ 94.5	\$ 283			
34	A1.1	A1.1	DIV-22	Plumber	Hose Bibb	4	0%	4	EA	0.885	3.54	\$ 51.0	\$ 180.4	\$ 27.7	\$ 110.9	\$ 291			
35	A1.1	A1.1	DIV-22	Plumber	Hot Water Heater (HWH) <i>(Assumed, Please Verify If Required)</i>	1	0%	1	EA	6.163	6.16	\$ 51.0	\$ 314.1	\$ 2,056.1	\$ 2,056.1	\$ 2,370			
					Fittings/ Bends (Pipes Fitting and Bends Assumed, Please Verify If Required)														
36	A1.1, A1.2	A1.1, A1.2	DIV-22	Plumber	(1" Dia) 90 Deg. Elbow	7	0%	7	EA	0.518	3.63	\$ 51.0	\$ 184.8	\$ 2.1	\$ 14.8	\$ 200			
37	A1.1, A1.2	A1.1, A1.2	DIV-22	Plumber	(1-1/4" Dia) 90 Deg. Elbow	2	0%	2	EA	0.539	1.08	\$ 51.0	\$ 54.9	\$ 5.0	\$ 10.0	\$ 65			
38	A1.1, A1.2	A1.1, A1.2	DIV-22	Plumber	(2" Dia to 3" Dia) 90 Deg. Elbow	1	0%	1	EA	0.522	0.52	\$ 51.0	\$ 26.6	\$ 2.8	\$ 2.8	\$ 29			
39	A1.1, A1.2	A1.1, A1.2	DIV-22	Plumber	(2" Dia) 90 Deg. Elbow	62	0%	62	EA	0.522	32.36	\$ 51.0	\$ 1,649.3	\$ 2.8	\$ 170.5	\$ 1,820			
40	A1.2	A1.2	DIV-22	Plumber	(3" Dia to 4" Dia) 90 Deg. Elbow	1	0%	1	EA	0.559	0.56	\$ 51.0	\$ 28.5	\$ 7.6	\$ 7.6	\$ 36			
41	A1.1	A1.1	DIV-22	Plumber	(3" Dia) 90 Deg. Elbow	19	0%	19	EA	0.559	10.62	\$ 51.0	\$ 541.3	\$ 7.6	\$ 144.2	\$ 685			
42	A1.1	A1.1	DIV-22	Plumber	(3/4" Dia to 1/2" Dia) 90 Deg. Elbow	3	0%	3	EA	0.508	1.52	\$ 51.0	\$ 77.7	\$ 0.8	\$ 2.5	\$ 80			
43	A1.2	A1.2	DIV-22	Plumber	(3/4" Dia) 90 Deg. Elbow	38	0%	38	EA	0.508	19.30	\$ 51.0	\$ 983.8	\$ 0.8	\$ 31.9	\$ 1,016			
44	A1.1, A1.2	A1.1, A1.2	DIV-22	Plumber	(1" Dia) Tee	1	0%	1	EA	0.570	0.57	\$ 51.0	\$ 29.0	\$ 9.0	\$ 9.0	\$ 38			
45	A1.2	A1.2	DIV-22	Plumber	(1/2" Dia to 3/4" Dia) Tee	11	0%	11	EA	0.520	5.72	\$ 51.0	\$ 291.5	\$ 2.5	\$ 27.5	\$ 319			
46	A1.1, A1.2	A1.1, A1.2	DIV-22	Plumber	(1-1/4" Dia) Tee	2	0%	2	EA	0.602	1.20	\$ 51.0	\$ 61.4	\$ 13.3	\$ 26.5	\$ 88			
47	A1.2	A1.2	DIV-22	Plumber	(2" Dia to 3" Dia) Tee	15	0%	15	EA	0.557	8.36	\$ 51.0	\$ 425.8	\$ 7.3	\$ 109.4	\$ 535			
48	A1.2	A1.2	DIV-22	Plumber	(2" Dia To 4" Dia) Tee	1	0%	1	EA	0.601	0.60	\$ 51.0	\$ 30.6	\$ 13.1	\$ 13.1	\$ 44			
49	A1.1, A1.2	A1.1, A1.2	DIV-22	Plumber	(2" Dia) Tee	23	0%	23	EA	0.544	12.51	\$ 51.0	\$ 637.6	\$ 5.6	\$ 128.6	\$ 766			
50	A1.1, A1.2	A1.1, A1.2	DIV-22	Plumber	(3" Dia to 4" Dia) Tee	3	0%	3	EA	0.640	1.92	\$ 51.0	\$ 97.8	\$ 18.2	\$ 54.6	\$ 152			
51	A1.1	A1.1	DIV-22	Plumber	(3" Dia) Tee	1	0%	1	EA	0.553	0.55	\$ 51.0	\$ 28.2	\$ 6.7	\$ 6.7	\$ 35			
52	A1.1, A1.2	A1.1, A1.2	DIV-22	Plumber	(3/4" Dia to 1" Dia) Tee	14	0%	14	EA	0.575	8.05	\$ 51.0	\$ 410.2	\$ 9.7	\$ 135.7	\$ 546			
53	A1.1, A1.2	A1.1, A1.2	DIV-22	Plumber	(3/4" Dia) Tee	26	0%	26	EA	0.532	13.83	\$ 51.0	\$ 704.9	\$ 4.1	\$ 106.1	\$ 811			
54	A1.1, A1.2	A1.1, A1.2	DIV-22	Plumber	(4" Dia) Tee	3	0%	3	EA	0.598	1.79	\$ 51.0	\$ 91.4	\$ 12.7	\$ 38.0	\$ 129			
55	A1.2	A1.2	DIV-22	Plumber	(1/2" Dia to 3/4" Dia) Reducer	15	0%	15	EA	0.515	7.73	\$ 51.0	\$ 393.7	\$ 1.8	\$ 27.6	\$ 421			
56	A1.1, A1.2	A1.1, A1.2	DIV-22	Plumber	(1-1/4" Dia to 1" Dia) Reducer	8	0%	8	EA	0.537	4.30	\$ 51.0	\$ 218.9	\$ 4.7	\$ 37.9	\$ 257			
57	A1.1, A1.2	A1.1, A1.2	DIV-22	Plumber	(1-1/4" Dia to 3/4" Dia) Reducer	2	0%	2	EA	0.528	1.06	\$ 51.0	\$ 53.8	\$ 3.5	\$ 6.9	\$ 61			
58	A1.2	A1.2	DIV-22	Plumber	(3/4" Dia to 1" Dia) Reducer	1	0%	1	EA	0.521	0.52	\$ 51.0	\$ 26.6	\$ 2.6	\$ 2.6	\$ 29			
59	A1.2	A1.2	DIV-22	Plumber	(4" Dia to 3" Dia) Reducer	1	0%	1	EA	0.585	0.59	\$ 51.0	\$ 29.8	\$ 11.0	\$ 11.0	\$ 41			
60			DIV-22	Plumber	Additional Cost Based on plumbing work Area	2,402	5%	2,522	SF	0.120	302.65	\$ 51.0	\$ 15,423.6	\$ 0.5	\$ 1,261.1	\$ 16,685			
<b>SUB TOTAL</b>											Total Lab. Hours = \$		1,318	Total Lab \$	67,186	Total Mat. \$	30,557	\$ 97,742	\$ 19,918
<b>MATERIAL TAX</b>													9.5%			\$ 2,903	\$ 2,903	\$ 2,903	
<b>OVERHEAD AND</b>													25%	\$ 16,796		\$ 7,639	\$ 24,436	\$ 24,436	
<b>TOTAL BASE BID</b>														\$ 83,982		\$ 41,099	\$ 125,081	\$ 47,256	

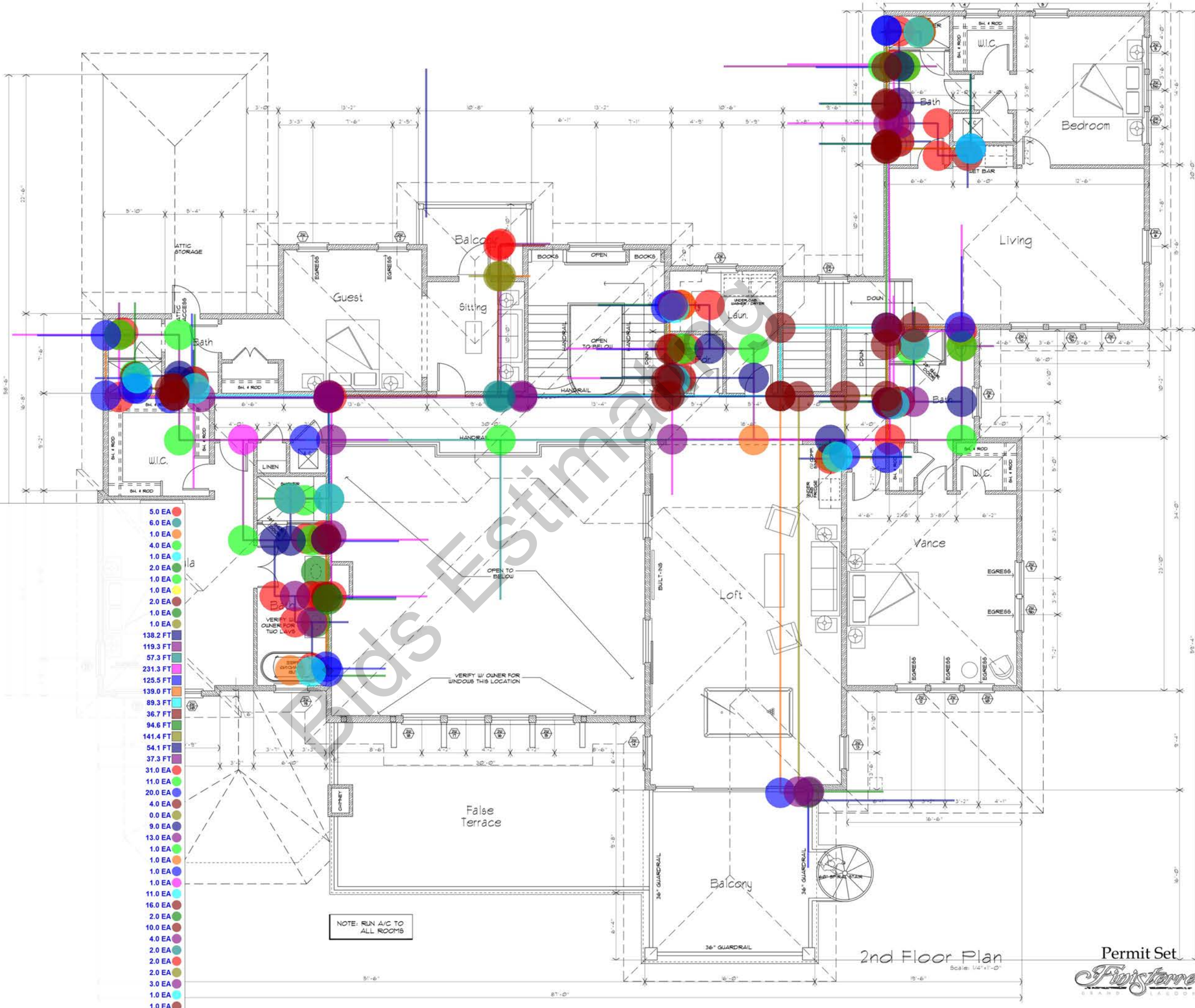


- Legend**
- ALL INTERIOR WALLS ARE 2 x 4 STUDS AT 16" o.c. w/ 1/2" GYP. BD. UNLESS NOTED OTHERWISE
  - ALL EXTERIOR WALLS ARE 2 x 6 STUDS AT 16" o.c. w/ 1/2" GYP. BD. UNLESS NOTED OTHERWISE - SEE EXTERIOR ELEVATIONS FOR EXTERIOR WALL FINISH
  - SHEAR WALL - SEE SHEAR WALL NOTES THIS SHEET
  - INDICATES FLOOR LEVEL OF WINDOW INDICATES WINDOW NO.
  - DOOR SYMBOL
  - INDICATES BEAM BEARING POINTS PROVIDE STUD PACK (5) STUDS MIN. SEE FRAMING PLANS

- Water Closet
- Lavatory
- Standing Free Tub
- Shower
- Floor Drain
- Urinal
- Sink W/ Dispenser
- Bar Sink
- Laundry Sink
- Hose Bib
- (5'-2" X 7'-0") Shower Pan
- (3'-0" X 5'-2") Shower Pan
- Shower Drain
- (2" Dia) Sanitary Pipe
- (3" Dia) Sanitary Pipe
- (4" Dia) Sanitary Pipe
- (2" Dia) Vent Pipe
- (1/2" Dia) Cold Water Pipe
- (3/4" Dia) Cold Water Pipe
- (1" Dia) Cold Water Pipe
- (1-1/4" Dia) Cold Water Pipe
- (1/2" Dia) Hot Water Pipe
- (3/4" Dia) Hot Water Pipe
- (1" Dia) Hot Water Pipe
- (1-1/4" Dia) Hot Water Pipe
- (2" Dia) 90 Deg. Elbow
- (3" Dia) 90 Deg. Elbow
- (3/4" Dia) 90 Deg. Elbow
- (1" Dia) 90 Deg. Elbow
- (3" Dia to 4" Dia) 90 Deg. Elbow
- (2" Dia to 3" Dia) Tee
- (2" Dia) Tee
- (2" Dia To 4" Dia) Tee
- (4" Dia) Tee
- (3" Dia to 4" Dia) Tee
- (1/2" Dia to 3/4" Dia) Reducer
- (3/4" Dia) Tee R
- (1/2" Dia to 3/4" Dia) Tee
- (3/4" Dia to 1" Dia) Tee
- (1-1/4" Dia to 1" Dia) Reducer
- (2" Dia to 3" Dia) 90 Deg. Elbow
- Exterior Shower Head

**BUILDING AREA TABLE**

Room	Area (sq. ft.)
Garage	142.9
Den	72.5
Foyer	114.1
Great Rm.	184.9
Kitchen	122.8
Study	125.2
M. Bedroom	26.8
M. Bath	36.4
Pool Bath	88.2
Summer Kitchen / Bar	141.4
Outdoor Living	6.3
Sitting	36.7
Casual Dining	31.0
Laundry	8.0
W.C.	18.0
Pantry	3.0
Hall	1.0
Stair	10.0
Storage	2.0
W.C.	4.0
W.C.	4.0
W.C.	4.0
W.C.	1.0
W.C.	2.0



- er Closet
- atory
- ding Free Tub
- ver
- Sink
- atory (If Required)
- ary Tub
- " X 5'-0") Shower Pan
- " X 4'-2") Shower Pan
- " X 5'-8") Shower Pan
- ia) Sanitary Pipe
- ia) Sanitary Pipe
- ia) Sanitary Pipe
- ia) Vent Pipe
- Dia) Cold Water Pipe
- Dia) Cold Water Pipe
- ia) Cold Water Pipe
- 4" Dia) Cold Water Pipe
- Dia) Hot Water Pipe
- Dia) Hot Water Pipe
- ia) Hot Water Pipe
- 4" Dia Hot Water Pipe
- ia) 90 Deg. Elbow
- ia) 90 Deg. Elbow
- Dia) 90 Deg. Elbow
- ia) 90 Deg. Elbow
- ia to 4" Dia) 90 Deg. Elbow
- ia to 3" Dia) Tee
- ia) Tee
- ia) Tee
- ia to 4" Dia) Tee
- ia to 3" Dia) Reducer
- ia) Tee
- Dia to 3/4" Dia) Reducer
- Dia) Tee R
- Dia to 3/4" Dia) Tee
- Dia to 1" Dia) Tee
- 4" Dia to 1" Dia) Reducer
- 4" Dia) Tee
- 2.0 EA
- 4.0 EA
- 2.0 EA
- 2.0 EA
- 3.0 EA
- 1.0 EA
- 1.0 EA

- 5.0 EA
- 6.0 EA
- 1.0 EA
- 4.0 EA
- 1.0 EA
- 2.0 EA
- 1.0 EA
- 1.0 EA
- 1.0 EA
- 1.0 EA
- 138.2 FT
- 119.3 FT
- 57.3 FT
- 231.3 FT
- 125.5 FT
- 139.0 FT
- 89.3 FT
- 36.7 FT
- 94.6 FT
- 141.4 FT
- 54.1 FT
- 37.3 FT
- 31.0 EA
- 11.0 EA
- 20.0 EA
- 4.0 EA
- 0.0 EA
- 9.0 EA
- 13.0 EA
- 1.0 EA
- 1.0 EA
- 1.0 EA
- 11.0 EA
- 16.0 EA
- 2.0 EA
- 2.0 EA
- 10.0 EA
- 4.0 EA
- 2.0 EA
- 2.0 EA
- 3.0 EA
- 1.0 EA
- 1.0 EA