

# BIDS ESTIMATING

Client: (Hidden for Privacy)  
 Project Name: (Hidden for Privacy)  
 Project ID: (Hidden for Privacy)  
 Last Updated: 27/02/2022



Website: bidsestimating.com  
 Email: info@bidsestimating.com  
 Contact: +1 (832) 346 0507

## Quantity Takeoff Sheet

### Paint

ITEM #	REF. SHEET	DETAIL	CSI SECT	Sub Contractor	DESCRIPTION	QTY.	WASTAGE	QTY WITH WASTAGE	UNIT	UNIT LABOR HOURS	TOTAL LABOR HOURS	PER HOUR LABOR RATE	TOTAL LABOR COST	UNIT MATERIAL COST	TOTAL MATERIAL COST	ITEM COST	TRADE COST
			<b>DIV-09</b>														<b>\$ 2,930</b>
<b>Paint</b>																	
<b>Wall Paint</b>																	
1	A4.1,A10.1	A4.1,A10.1	DIV-09	Interior Painter	Stucco Wall Paint-Always Blue PPG, 1156-3 ( 1 Coat Primer + 2 Coat Paint)	355	5%	373	SF	0.032	11.93	\$ 19.8	\$235.8	\$ 0.7	\$ 248.8	\$ 485	
<b>Ceiling Paint</b>																	
2	A5.1	A5.1	DIV-09	Interior Painter	Stucco Ceiling Paint-Always Blue PPG, 1156-3 ( 1 Coat Primer + 2 Coat Paint)	517	5%	542	SF	0.032	17.36	\$ 19.8	\$343.0	\$ 0.7	\$ 362.0	\$ 705	
<b>Trim and Sills</b>																	
3	A7.1	A7.1	DIV-09	Exterior Painter	4" Wide Paint on Window Sill-B Manufacturer: PPG PITTSBURGH Paint Color: Creamy White PPG 1105-1 ( 1 Coat Primer + 2 Coat Paint)	2	5%	2	SF	1.000	1.84	\$ 19.8	\$ 36.3	\$ 0.7	\$ 1.2	\$ 38	
<b>Exterior Paint</b>																	
4	A7.1	A7.1	DIV-09	Exterior Painter	Paint on Stucco-A Manufacturer: PPG PITTSBURGH Paint Color: Toasted Almond PPG 1097-3 ( 1 Coat Primer + 2 Coat Paint)	374	5%	392	SF	0.032	12.55	\$ 19.8	\$248.0	\$ 0.7	\$ 261.7	\$ 510	
5	A7.1	A7.1	DIV-09	Exterior Painter	Paint on Base Stucco-A Manufacturer: PPG PITTSBURGH Paint Color: Creamy White PPG 1105-1 ( 1 Coat Primer + 2 Coat Paint)	116	5%	122	SF	0.032	3.91	\$ 19.8	\$ 77.3	\$ 0.7	\$ 81.6	\$ 159	
6	A7.1	A7.1	DIV-09	Exterior Painter	Paint on Shutters-K Manufacturer: PPG PITTSBURGH Paint Color: Monkey Madness PPG 1020-7 ( 1 Coat Primer + 2 Coat Paint)	19	5%	20	SF	0.100	1.97	\$ 19.8	\$ 39.0	\$ 0.7	\$ 12.9	\$ 52	
7	A7.1	A7.1	DIV-09	Exterior Painter	8" Wide Paint at Trim Manufacturer: PPG PITTSBURGH Paint Color: Creamy White PPG 1105-1 ( 1 Coat Primer + 2 Coat Paint)	37	5%	38	SF	0.100	3.85	\$ 19.8	\$ 76.0	\$ 0.7	\$ 25.2	\$ 101	
8	A7.1	A7.1	DIV-09	Exterior Painter	9" Polyurethane or Acrylic on Foam Crown Molding: Creamy White PPG #1105-1 ( 1 Coat Primer + 2 Coat Paint)	90	5%	94	SF	0.032	3.01	\$ 19.8	\$ 59.4	\$ 0.7	\$ 61.7	\$ 121	

# BIDS ESTIMATING

Client: (Hidden for Privacy)  
 Project Name: (Hidden for Privacy)  
 Project ID: (Hidden for Privacy)  
 Last Updated: 27/02/2022







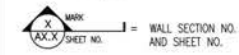

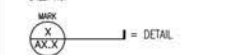
Website: bidsestimating.com  
 Email: info@bidsestimating.com  
 Contact: +1 (832) 346 0507

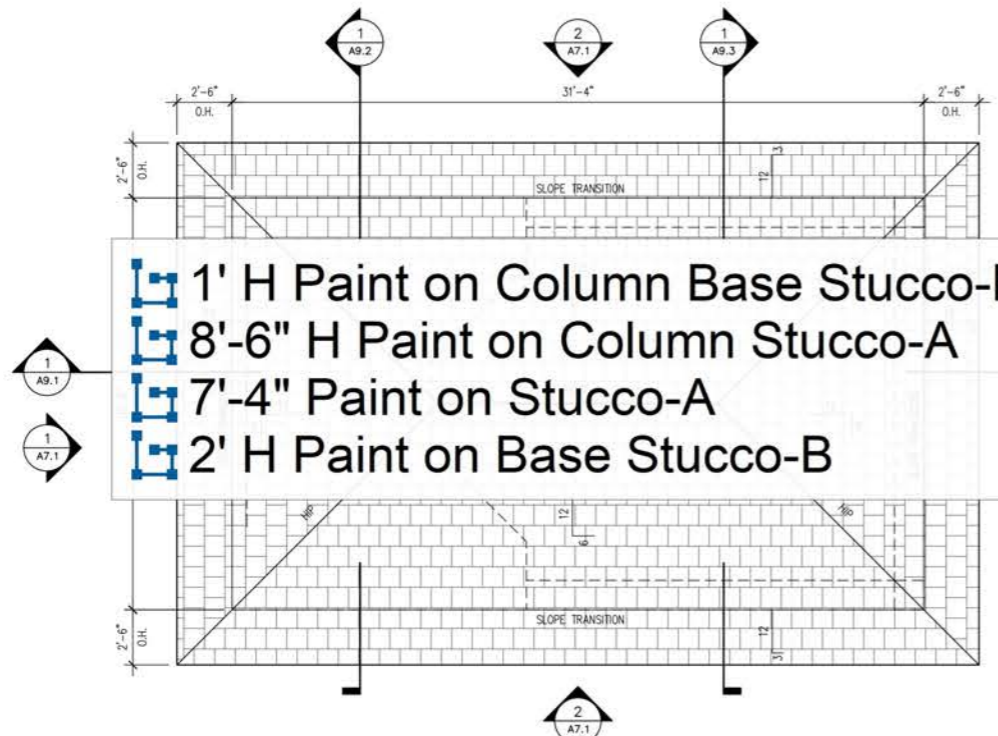
## Quantity Takeoff Sheet





### Paint

ITEM #	REF. SHEET	DETAIL	CSI SECT	Sub Contractor	DESCRIPTION	QTY.	WASTAGE	QTY WITH WASTAGE	UNIT	UNIT LABOR HOURS	TOTAL LABOR HOURS	PER HOUR LABOR RATE	TOTAL LABOR COST	UNIT MATERIAL COST	TOTAL MATERIAL COST	ITEM COST	TRADE COST
9	A7.1	A7.1	DIV-09	Exterior Painter	1' H Paint on Column (Base Stucco)-B Manufacturer: PPG PITTSBURGH Paint Color: Creamy White PPG 1105-1 ( 1 Coat Primer + 2 Coat Paint)	11	5%	12	SF	0.200	2.33	\$ 19.8	\$ 46.0	\$ 0.7	\$ 7.6	\$ 54	
10	A7.1	A7.1	DIV-09	Exterior Painter	8'-6" H Paint on Column Stucco-A Manufacturer: PPG PITTSBURGH Paint Color: Toasted Almond PPG 1097-3 ( 1 Coat Primer + 2 Coat Paint)	94	5%	99	SF	0.032	3.16	\$ 19.8	\$ 62.5	\$ 0.7	\$ 66.0	\$ 129	
11	A7.1	A7.1	DIV-09	Exterior Painter	7'-4" H Paint on Stucco-A Manufacturer: PPG PITTSBURGH Paint Color: Toasted Almond PPG 1097-3 ( 1 Coat Primer + 2 Coat Paint)	90	5%	95	SF	0.032	3.03	\$ 19.8	\$ 59.8	\$ 0.7	\$ 63.1	\$ 123	
12	A7.1	A7.1	DIV-09	Exterior Painter	2' H Paint on Base Stucco-B Manufacturer: PPG PITTSBURGH Paint Color: Creamy White PPG 1105-1 ( 1 Coat Primer + 2 Coat Paint)	25	5%	26	SF	0.100	2.58	\$ 19.8	\$ 51.0	\$ 0.7	\$ 16.9	\$ 68	
13	A7.1	A7.1	DIV-09	Exterior Painter	Painted 2x6 EPF Foam False Rafter Tail-D Manufacturer: PPG PITTSBURGH Paint Color: Monkey Madness PPG 1020-7 ( 1 Coat Primer + 2 Coat Paint)	174	5%	183	SF	0.032	5.86	\$ 19.8	\$115.9	\$ 0.7	\$ 120.2	\$ 236	
14	A7.1	A7.1	DIV-09	Exterior Painter	8" Wide Paint at Header-B Manufacturer: PPG PITTSBURGH Paint Color: Creamy White PPG 1105-1 ( 1 Coat Primer + 2 Coat Paint)	8	5%	9	SF	0.500	4.40	\$ 19.8	\$ 86.9	\$ 0.7	\$ 5.8	\$ 93	
					<b>Door Paint</b>												
15	A4.2	A4.1	DIV-09	Interior Painter	Paint on (3'-0" x 8'-0") Fiberglass Door w/Metal Frame Manufacturer: PPG PITTSBURGH Paint Color: Petaluma Dust PPG 15-10 ( 1 Coat Primer + 2 Coat Paint)	48	5%	50	SF	0.025	1.26	\$ 19.8	\$ 24.9	\$ 0.7	\$ 33.6	\$ 59	

<b>SUB TOTAL</b>	<b>Total Lab. Hours =</b>	<b>79</b>	<b>Total Lab</b>	<b>\$1,562</b>	<b>Total Mat.</b>	<b>\$ 1,369</b>	<b>\$ 2,930</b>	<b>\$ 2,930</b>
<b>MATERIAL TAX</b>			9.5%			\$ 130	\$ 130	\$ 130
<b>OVERHEAD AND PI</b>			50%	\$ 781		\$ 684	\$ 1,465	\$ 1,465
<b>TOTAL BASE BID</b>				<b>\$2,343</b>		<b>\$ 2,183</b>	<b>\$ 4,526</b>	<b>\$ 4,526</b>

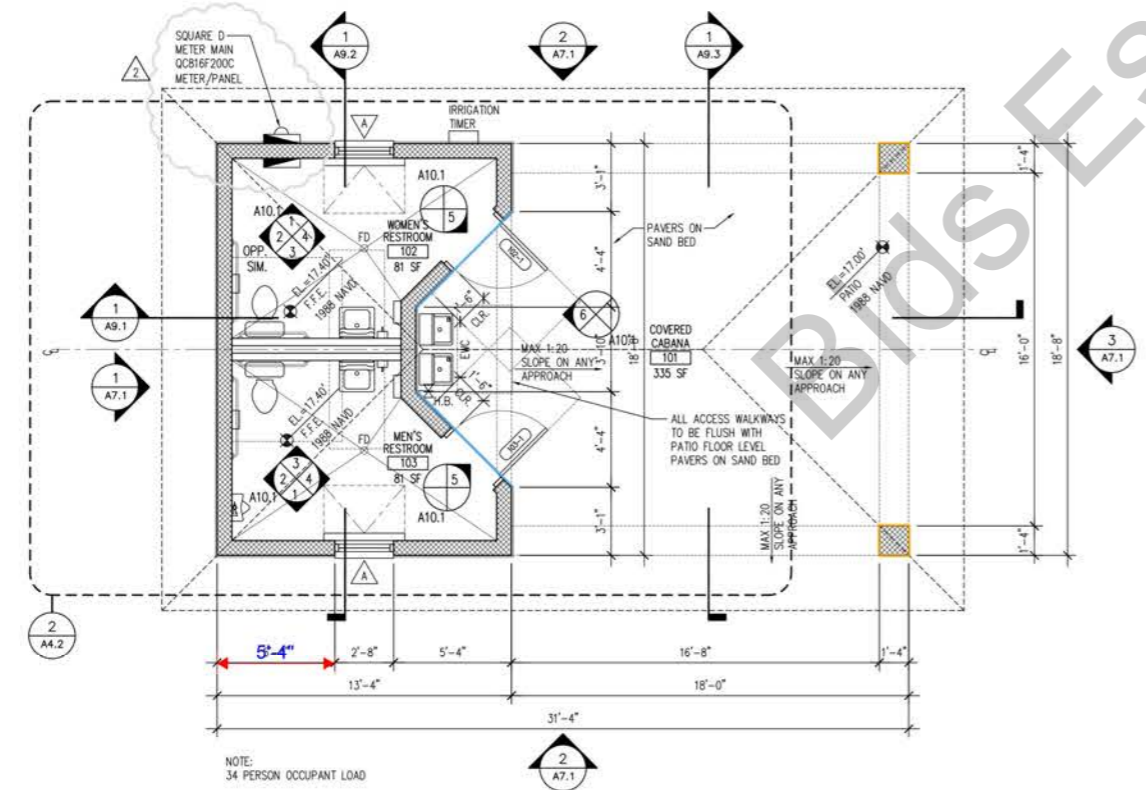
-  = 8" CMU WALL
-  = DOOR NUMBER - (SEE SHEET A4.2)
-  = WINDOW TYPE - (SEE SHEET A4.2)
-  = DETAIL
-  = WALL SECTION NO. AND SHEET NO.
-  = ELEVATION MARKER
-  = DETAIL



-  11.1 FT
-  11.1 FT
-  12.3 FT
-  12.3 FT

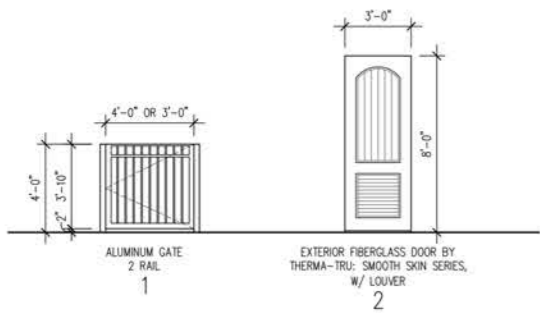
**ROOF VENT CALCULATIONS:**  
 ATTIC SPACE = 860 TOTAL SQUARE FEET.  
 FBC 1203.2 ATTIC SPACES STATES "THE NET FREE VENTILATING AREA SHALL NOT BE LESS THAN 1/150TH OF THE AREA OF THE SPACE VENTILATED."

**2 ROOF PLAN - CABANA**  
 A4.1 SCALE: 1/4" = 1'-0"



**1 FLOOR PLAN - CABANA**  
 A4.1 SCALE: 1/4" = 1'-0"





D O O R										F R A M E					
DOOR	ROOM	SIZE	MATERIAL	FINISH	TYPE	THICK-NESS	FRAME	MATERIAL	FINISH	H	J	T	HRDWR	REMARKS	
105-1	WOMEN'S RESTROOM	3-0 X 8-0	FIBERGLASS	-	1	-	-	MTL.	-	H-	J-	T-	01	LOUVER	
105-1	MEN'S RESTROOM	3-0 X 8-0	FIBERGLASS	-	1	-	-	MTL.	-	H-	J-	T-	01	LOUVER	
105-1	POOL DECK AREA	4-0 X 6-0	ALUM.	-	2	-	-	ALUM.	-	H-	J-	T-	02		
105-2	POOL DECK AREA	3-0 X 6-0	ALUM.	-	2	-	-	ALUM.	-	H-	J-	T-	02		

Door Hardware Schedule					
Hardware Group No. 01					
Qty	Description	Catalog Number	Finish	Mfr	
3 EA	HINGE	3CB1 4.5 X 4.5	640	IVE	
1 EA	DEXTER SOLSTICE LEVER	J54SOL716	AGED BRONZE	SCHLAGE	
1 EA	SURFACE CLOSER	4111 EDA	689	LCN	
1 EA	KICK PLATE	8400 10" X 2" LDW B4E	640	IVE	
1 EA	WALL STOP	WS-406/407CCV	640	AL	ZER
1 EA	SWEEP	100A	AL	ZER	ZER
1 EA	THRESHOLD	156A	AL	ZER	ZER
1 EA	SEALS	188S	GRY	ZER	ZER

Hardware Group No. 02					
Qty	Description	Catalog Number	Finish	Mfr	
1	GATE MAGNET POWER SUPPLY	M490G PS904	689	SCE	SCE

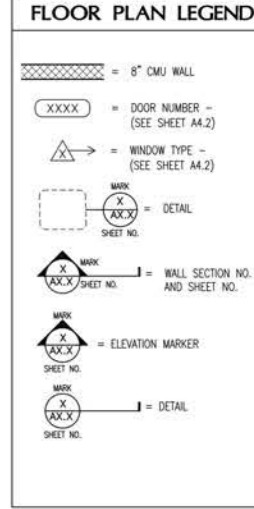
Provide each SGL door(s) with the following:  
CARD READER TO RELEASE MAGNETIC LOCK BALANCE OF HARDWARE BY GATE SUPPLIER

**General Notes**

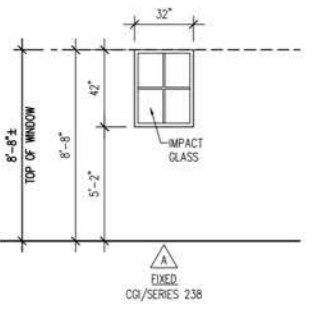
- PRIME AND PAINT/SEAL TOP, BOTTOM, AND EDGES OF ALL DOORS PRIOR TO INSTALLATION.
- PROVIDE CONTINUOUS METAL DRIP AT EXTERIOR DOOR FRAME HEAD - HAGER 8105-A.
- ALL WOOD IS TO BE PRESSURE TREATED, KILN DRIED AFTER TREATMENT (KDAT).

•• Paint on (3'-0" x 8'-0") Fiberglass Door w/Metal Frame

2.0 EA



3 DOOR TYPES  
A4.2 SCALE: 1/4" = 1'-0"



2 WINDOW TYPE  
A4.2 SCALE: 1/4" = 1'-0"

Window Schedule					
MARK	QTY.	MANUF. NO	UNIT SIZE (VERIFY)	DESCRIPTION	COMMENTS
A	2	CGI SERIES 238	32" x 42"	FIXED	PRIVACY FILM AND IMPACT GLASS

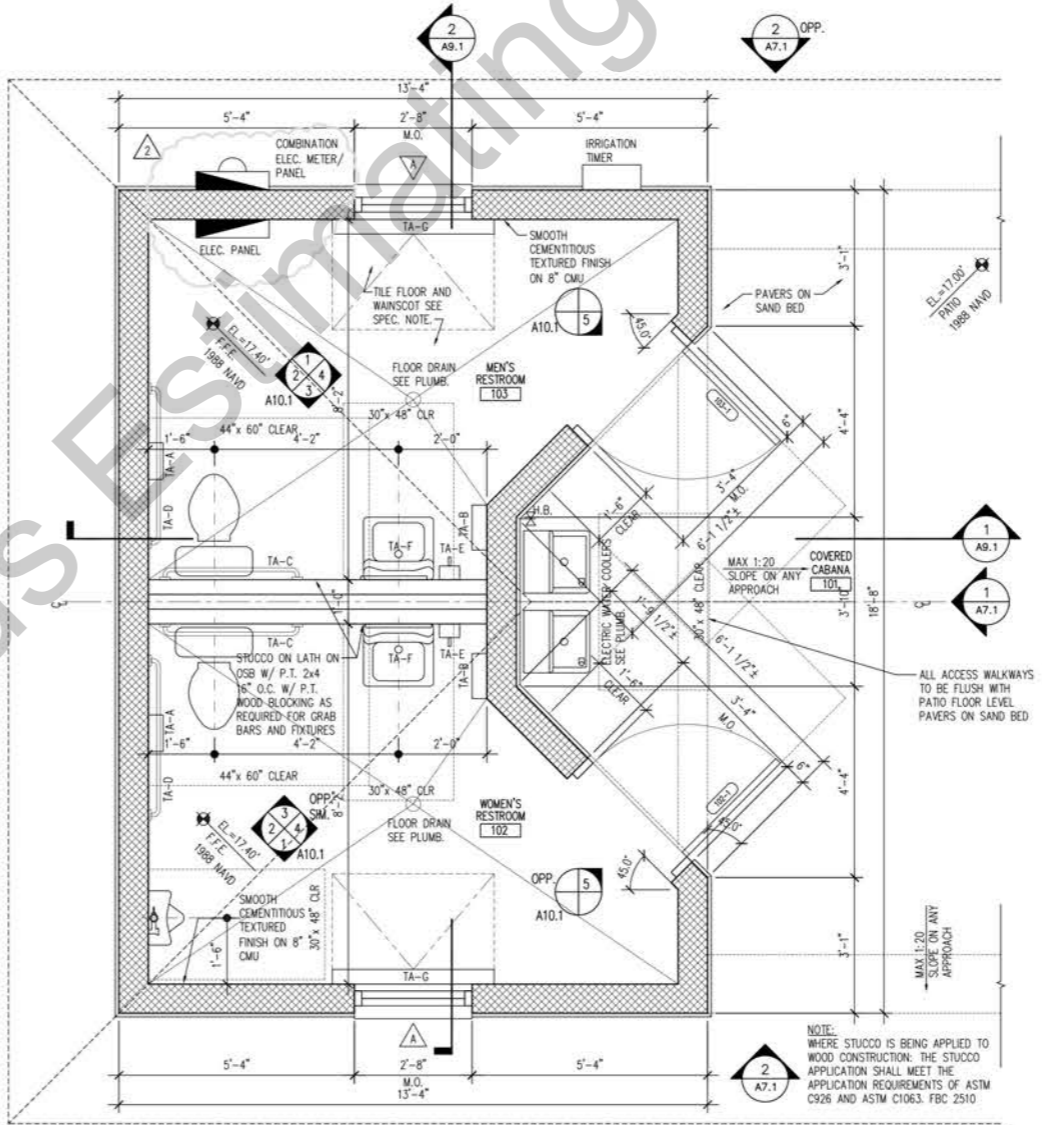
**NOTES:**

- PROJECT DESIGN BASIS IS CGI WINDOWS AND DOORS, SERIES 238 ALUMINUM FIXED WINDOW W/ IMPACT GLASS. BRONZE FRAME COLOR.
- PROVIDE SHOP DRAWINGS TO ARCHITECT PRIOR TO WINDOW FABRICATION.
- CONTRACTOR IS TO VERIFY UNIT SIZE AND ROUGH OPENING PRIOR TO ORDERING / CONSTRUCTION.
- IMPACT RESISTANT GLASS IS REQUIRED.

**MEN AND WOMEN'S RESTROOM FLOOR TILE SPEC:**  
 MANUFACTURER: SHAW FLOORS  
 GLAZED PORCELAIN TILE: ETERNAL TG15B  
 COLOR: 200 BEIGE  
 MODULE SIZE: 8 INCHES BY 32 INCHES.  
 DIRECTION: 1/3 OFFSET FRONT TO BACK  
 GROUT COLOR: KHAKI #186

EXTERIOR PAVERS				
LOCATION	MANUFACTURER	COLOR	SIZE	PATTERN
WALKWAY	TREMRON	SIERRA	4x8	HERRINGBONE 45
WALKWAY BORDER	TREMRON	TAUPE	4x8	SOLDIER BORDER

TOILET ACCESSORIES LEGEND	
TA-A	TOILET PAPER DISPENSER BY BOBRICK, B-2740, TOILET TISSUE DISPENSER FOR TWO ROLLS. FINISH: CAST ALUMINUM SATIN
TA-B	TOWEL DISPENSER / WASTE RECEPTACLE BY BOBRICK, B-3699, SURFACE MOUNTED. FINISH: SATIN - STAINLESS STEEL
TA-C	GRAB BAR BY BOBRICK B-5806x36" STRAIGHT GRAB BAR. FINISH: SATIN-STAINLESS STEEL
TA-D	GRAB BAR BY BOBRICK B-5806x42" STRAIGHT GRAB BAR. FINISH: SATIN-STAINLESS STEEL
TA-E	SOAP DISPENSER BY GAMCO, G-9505A, SURFACE MOUNTED. FINISH: SATIN - STAINLESS STEEL
TA-F	MIRROR BY GAMCO, FT-18x36-1 FIXED POSITION TILT MIRROR. FRAME FINISH: STAINLESS STEEL, SATIN.
TA-G	BABY CHANGING STATION BY KOALA KARE PRODUCTS, KB200-05 HORIZONTAL WALL MOUNTED BABY CHANGING STATION. COLOR: GRANITE



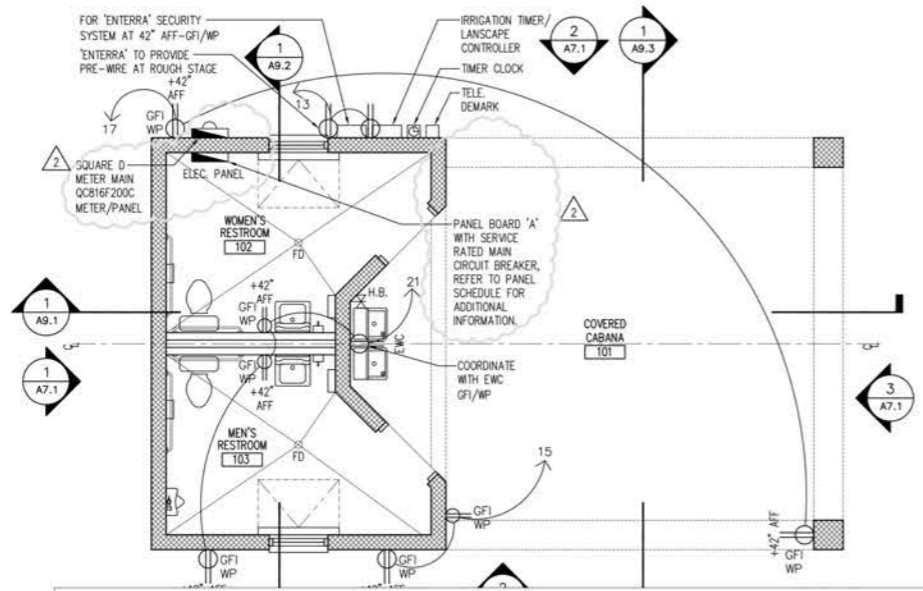
1 FLOOR PLAN DETAIL  
A4.2 SCALE: 1/2" = 1'-0"

TOILET FIXTURE SCHEDULE		
	MANUFACTURER	MODEL #, COLOR
HANDICAPPED LAVATORIES	KOHLER	MODEL: 1997-4-0 BRENHAM COLOR: WHITE
SINK FAUCETS	MOEN	MODEL: 14621 CHATEAU COLOR: CHROME
COMMODOES	KOHLER	MODEL: K-3999-0 HIGHLINE COLOR: WHITE
MEN'S URINAL	KOHLER	MODEL: BARDON HIGH-EFFICIENCY URINAL (HEU) COLOR: WHITE

### Power Legend

- SWITCH
- SWITCH WITH DIMMER
- QUAD 120V DUPLEX OUTLET
- 120V DUPLEX RECEPTACLE  
GFI = GROUND FAULT DEVICE  
UC = UNDERCOUNTER  
SURROUNDED BY RECTANGLE = FLUSH FLOOR  
CLG = CEILING
- WATERPROOF DUPLEX OUTLET  
WEATHERPROOF WHILE-IN-USE COVER
- 220V DUPLEX OUTLET
- DUPLEX OUTLET FLOOR MOUNTED
- TELEPHONE JACK
- DATA JACK - DUPLEX DATA OUTLET,  
CAT 6 CONNECT TO PATCH PANEL  
SURROUNDED BY RECTANGLE = FLUSH FLOOR  
CLG = CEILING
- CABLE TELEVISION
- HEAVY DUTY DISCONNECT SWITCH,  
EXTERIOR WEATHERPROOF NEMA 3R  
OR NEMA 4XSS

**GENERAL NOTES:**  
 1. ALL OUTLETS AND SWITCHES TO BE COORDINATED NOT TO INTERFERE W/ TRIMWORK.  
 2. CONTRACTOR TO INFORM ARCHITECT OF ELECTRIC METER LOCATION.  
 3. FIELD VERIFY LOCATION OF ALL OUTLETS.  
 4. ALL EXTERIOR OUTLETS ARE GFI PROTECTED.



Ceiling Paint-Always Blue PPG, 1156-3 516.6 SQ FT

**2 POWER PLAN**  
 A5.1 SCALE: 1/4" = 1'-0"

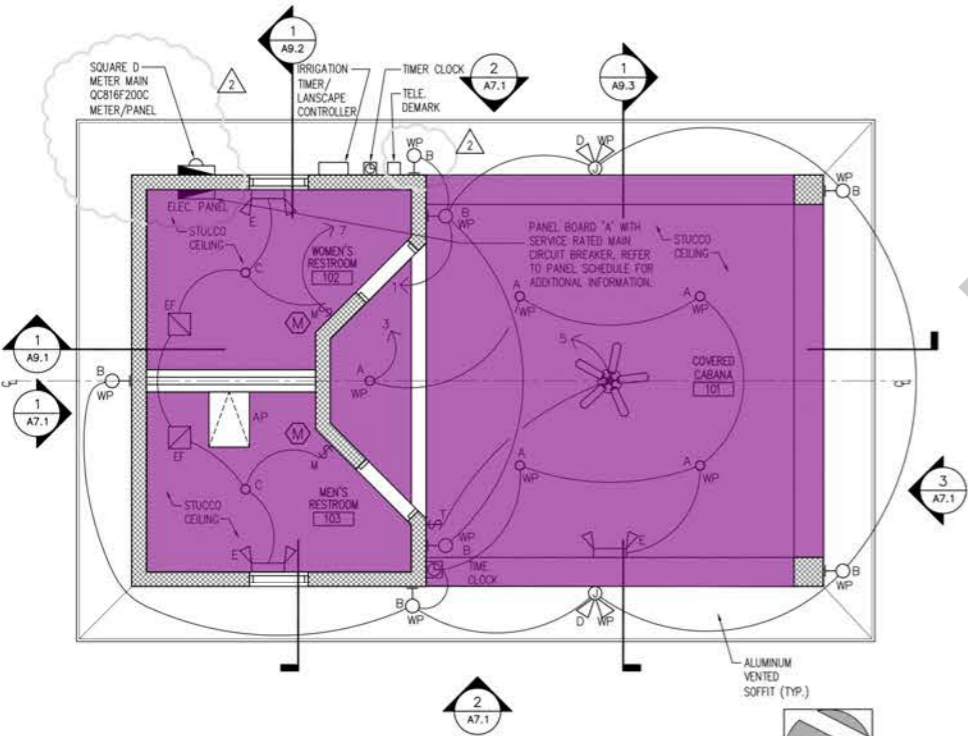
### PANEL SCHEDULES

CIR. NO.	WIRE	COND.	PHASE		CIR. BKR.	SERVING	WIRE	CONC.
			A	B				
<b>A</b> PANEL - NEMA 2 120/240 VOLT, 1 PHASE, 3 WIRE, 225 AMP, M.L.O. PANELBOARD SURFACE MOUNTED 10,000 A.I.C.								
1	100	20			2	100	50	POOL VAC PAC 3-#6-#10G 1"
3	100	20						EXTERIOR LIGHTING 2-12x12G 1/2"
6	100	20			6	100	40	SPA VAC PAC 3-#6-#10G 1"
7	100	20						INTERIOR LIGHTING 2-12x12G 1/2"
9	100	20			10	100	20	SPARE
11	100	20			12	100	20	POOL LIGHTS 2-#10-#10G3/4"
13	100	20			14	100	20	SECURITY SYSTEM 2-12x12G 1/2"
15	100	20			16	100	20	RECEPTACLES 2-12x12G 1/2"
17	100	20			18	100	20	RECEPTACLES 2-12x12G 1/2"
19	100	20			20	100	20	RECEPTACLES 2-12x12G 1/2"
21	100	20			22	100	20	RECEPTACLES 2-12x12G 1/2"
23	100	20			24	100	20	INSTANT W.F.I.
25	100	20			26	100	20	INSTANT W.F.I.
27	100	20			28	100	20	SPACE
29	100	20			30	100	20	SPACE
31	100	20			32	100	20	SHADE STRUT #1 2-#10-#10G1"
33	100	20			34	100	20	SHADE STRUT #2 2-#10-#10G1"
35	100	20			36	100	20	SPACE
37	100	20			38	100	20	SPACE
39	100	20			40	100	20	SPACE
41	100	20			42	100	20	SPACE

\* BREAK THIS CIRCUIT THROUGH THE PHOTO CELL AND TIME CLOCK  
 † BREAK THIS CIRCUIT THROUGH THE TIME CLOCK ONLY  
 ‡ THE WIRE AND CONDUIT SIZE SHALL BE ADJUSTED AS REQUIRED TO MINIMIZE THE VOLTAGE DROP TO LESS THAN 3%.

### Lighting Legend

- MOTION VACANCY SENSOR
- SMOKE/CARBON MONOXIDE DETECTOR
- SURFACE MOUNTED LUMINAIRE FLUORESCENT
- FLUORESCENT STRIP LIGHT
- PENDANT LIGHT
- SURFACE MOUNTED LIGHT
- WALL MOUNTED EXTERIOR SCENCE
- WALL MOUNTED INTERIOR SCENCE
- EXHAUST FAN
- CEILING FAN
- CEILING HEIGHT
- ACCESS PANEL
- EXIT SIGN
- RECESSED DOWNLIGHT
- WATER PROOF DOWNLIGHT
- SWITCH
- SWITCH WITH 60 MIN. MAX. TIMER
- EMERGENCY LIGHTS
- FLUORESCENT SURFACE SECURITY LIGHTING FIXTURE W/ PC
- LIGHT TIME CLOCK



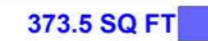







**1 REFLECTED CEILING / LIGHTING PLAN**  
 A5.1 SCALE: 1/4" = 1'-0"

### LIGHTING FIXTURE SCHEDULE

TYPE	DESCRIPTION	VOLT	LAMP #	MTD. & NOTES
A	PROGRESS LIGHTING CBICAT HOUSING WITH HS56-WH-3019 TRIM	120	--	RECESS DAMP LOCATION
B	WET LOCATION WALL LANTERN: PROGRESS, DEVEREUX, P560020-020, FINISH: ANTIQUE BRONZE	120	100 WATT E-26	7 QTY.-SEE ARCH. DRAWINGS
C	PROGRESS LIGHTING CBICAT HOUSING WITH HS56-WH-3019 TRIM	120	--	RECESS IN CEILING
D	PROGRESS LIGHTING PE341-20-30K	120	LED	SURFACE MOUNTED BELOW EAVE
E	PROGRESS LIGHTING PE2EU-30-RC	120	LED	SURFACE MTD. WET LOCATION

**NOTES:**  
 1. ALL TYPE 'E' FIXTURES SHALL BE CONNECTED AHEAD OF ALL SWITCHING.

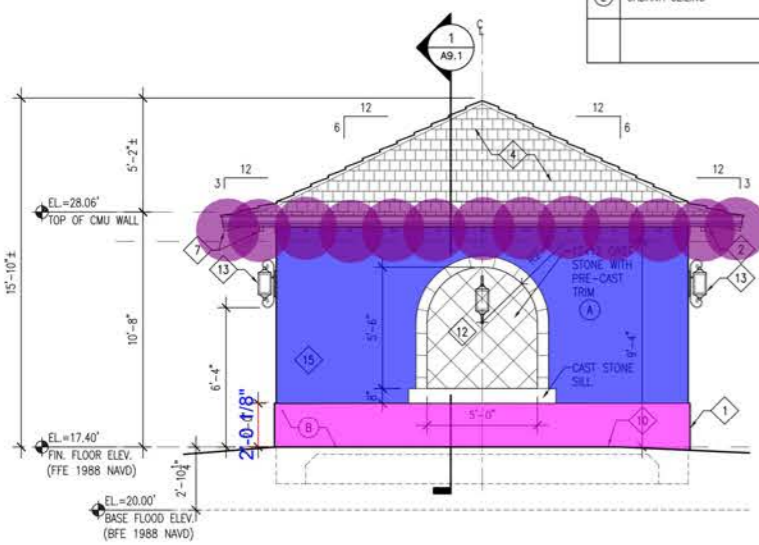
-  Paint on Stucco-A
-  Paint on Base Stucco-B
-  8" Wide Paint at Header-B
-  Paint on Shutters-K
-  8" Wide Paint at Trim
-  9" Polyurethane or Acrylic on Foam Crown Moulding: Creamy White PPG #1105-1
-  Painted 2x6 EPF Foam False Rafter Tail-D
-  4" Wide Paint on Window Sill-B

-  373.5 SQ FT
-  116.5 SQ FT
-  12.5 FT
-  18.8 SQ FT
-  54.7 FT
-  119.3 FT
-  64.0 EA
-  5.3 FT

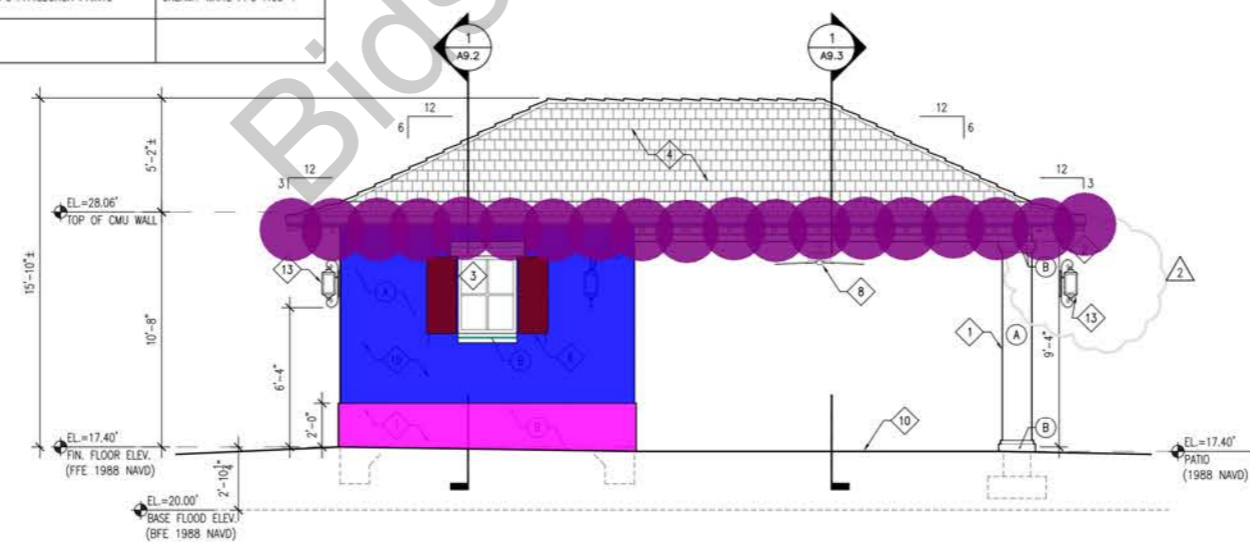
- ELEVATION KEYNOTES:
- 1 DECORATIVE COATING, COLOR: "TOASTED ALMOND" #1097-3 BY PPG PITTSBURGH PAINTS
  - 2 CONTINUOUS PERFORATED ALUMINUM SOFFIT AT UNDERSIDE OF OVERHANGS (TYPICAL)
  - 3 VINYL WINDOW BY PGT OR EQUAL (IMPACT RESISTANT) - FIXED W/APPLIED MUNTINS. SEE WINDOW SCHEDULE. COLOR: BRONZE
  - 4 ROOF TILE BY BORAL - BARCELONA 900, KHAKI BLEND
  - 5 NOT USED
  - 6 NON-OPERABLE, PVC OR COMPOSITE, SHUTTER W/ SHUTTER DOGS TYP. BY ATLANTIC PREMIUM SHUTTERS OR EQUAL. COLOR: "MONKEY MADNESS" PPG #1020-7.
  - 7 9" POLYURETHANE OR ACRYLIC ON FOAM CROWN MOULDING BY SUPERIOR ARCHITECTURAL SOLUTIONS. COLOR: "CREAMY WHITE" PPG #1105-1
  - 8 OUTDOOR CEILING FANS BY PROGRESS P2502-20. FINISH: ANTIQUE BRONZE.
  - 9 3" CROWN WITH 4" SAND FINISH BANDING AT WINDOW AND DOORS HEADS. COLOR: "CREAMY WHITE" PPG #1105-1
  - 10 EXTERIOR PAVERS: BY TREMRON WALKWAY-"SIERRA" 4x8 HERRINGBONE 45; WALKWAY BORDER-"TAUPE" 4x8 SOLDIER BORDER
  - 11 CAST STONE BY SUPERIOR ARCHITECTURE STYLE: KEYSTONE COLOR: BUFF (NON-BEVELED) 12x24; INSTALLED 1/2" OFFSET HORIZONTALLY
  - 12 STONE BY BORAL COLOR: COUNTRY LEDGESTONE, SEVILLA
  - 13 WALL MOUNTED EXTERIOR LIGHT FIXTURE: PROGRESS, DEVEREUX, OUTDOOR WALL LANTERN P560020-020, FINISH: ANTIQUE BRONZE
  - 14 NOT USED
  - 15 STUCCO

EXTERIOR COLOR SELECTIONS			
LOCATION	MANUFACTURER	COLOR	
(A) BODY COLOR	PPG PITTSBURGH PAINTS	TOASTED ALMOND PPG 1097-3	
(B) TRIM COLOR	PPG PITTSBURGH PAINTS	CREAMY WHITE PPG 1105-1	
(C) ENTRY DOORS	PPG PITTSBURGH PAINTS	PETALUMA DUST PPG 15-10	
(D) RAFTER TAILS	PPG PITTSBURGH PAINTS	MONKEY MADNESS PPG 1020-7	
(E) SOFFIT	ALUMINUM	MUSKET	
(F) FASOIA	ALUMINUM	MUSKET	
(G) DRIP EDGE	ALUMINUM	BRONZE	
(H) ROOF TILE	BORAL - BARCELONA 900	KHAKI BLEND	
(I) WINDOWS	PGT	BRONZE (IMPACT RESISTANT)	
(J) EXTERIOR DOOR HARDWARE	DEXTER BY SCHLAGE	SOLSTICE LEVER FINISH: AGED BRONZE	
(K) SHUTTERS	PPG PITTSBURGH PAINTS	MONKEY MADNESS PPG 1020-7	
(L) CABANA CEILING	PPG PITTSBURGH PAINTS	CREAMY WHITE PPG 1105-1	

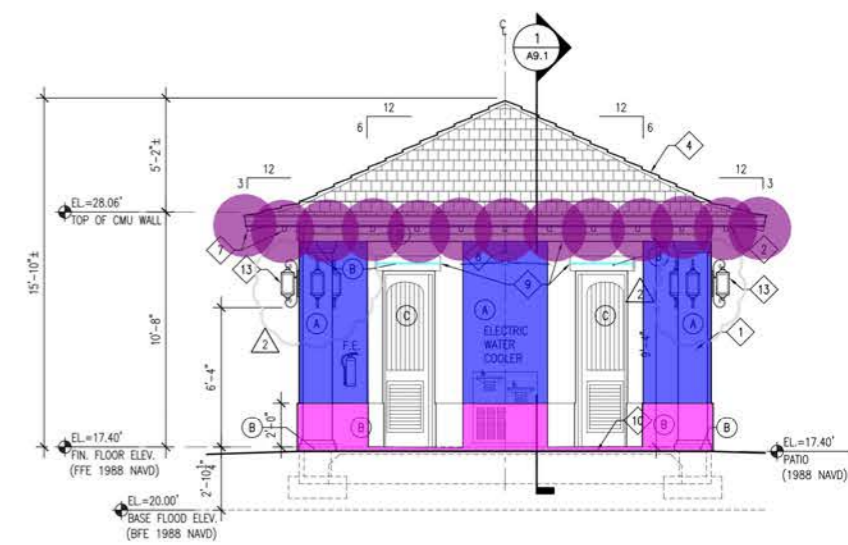
EXTERIOR PAVERS				
LOCATION	MANUFACTURER	COLOR	SIZE	PATTERN
WALKWAY	TREMRON	SIERRA	4x8	HERRINGBONE 45
WALKWAY BORDER	TREMRON	TAUPE	4x8	SOLDIER BORDER



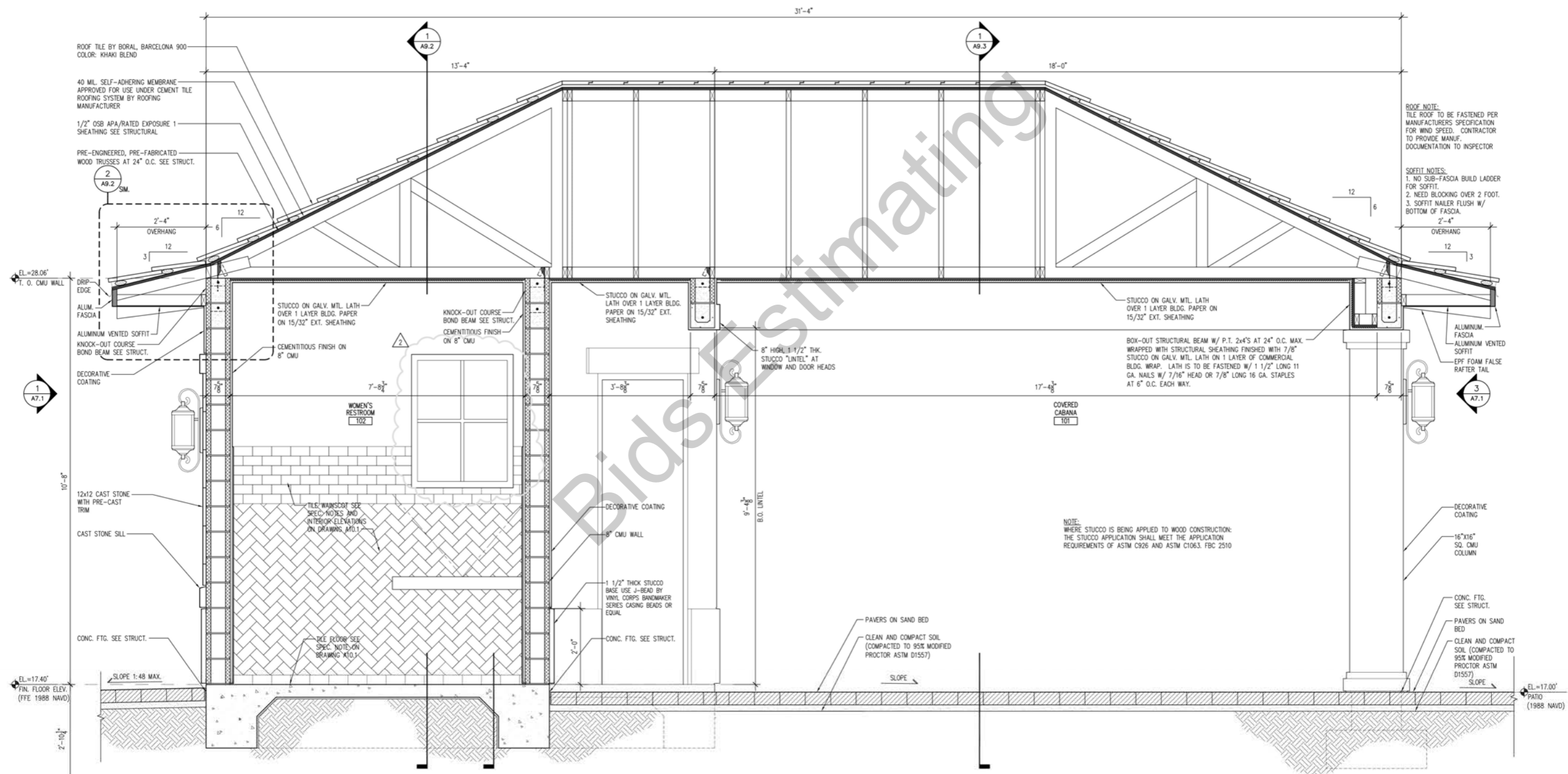
1 SOUTH ELEVATION - CABANA  
A7.1 SCALE: 1/4" = 1'-0"



2 EAST & WEST ELEVATIONS - CABANA  
A7.1 SCALE: 1/4" = 1'-0"



3 NORTH ELEVATION - CABANA  
A7.1 SCALE: 1/4" = 1'-0"



ROOF TILE BY BORAL, BARCELONA 900  
COLOR: KHAKI BLEND

40 MIL. SELF-ADHERING MEMBRANE  
APPROVED FOR USE UNDER CEMENT TILE  
ROOFING SYSTEM BY ROOFING  
MANUFACTURER

1/2" OSB APA/RATED EXPOSURE 1  
SHEATHING SEE STRUCTURAL

PRE-ENGINEERED, PRE-FABRICATED  
WOOD TRUSSES AT 24" O.C. SEE STRUCT.

**ROOF NOTE:**  
TILE ROOF TO BE FASTENED PER  
MANUFACTURER'S SPECIFICATION  
FOR WIND SPEED. CONTRACTOR  
TO PROVIDE MANUF.  
DOCUMENTATION TO INSPECTOR

**SOFFIT NOTES:**  
1. NO SUB-FASCIA BUILD LADDER  
FOR SOFFIT.  
2. NEED BLOCKING OVER 2 FOOT.  
3. SOFFIT NAILER FLUSH W/  
BOTTOM OF FASCIA.

BOX-OUT STRUCTURAL BEAM W/ P.T. 2x4'S AT 24" O.C. MAX.  
WRAPPED WITH STRUCTURAL SHEATHING FINISHED WITH 7/8"  
STUCCO ON GALV. MTL. LATH ON 1 LAYER OF COMMERCIAL  
BLDG. WRAP. LATH IS TO BE FASTENED W/ 1 1/2" LONG 11  
GA. NAILS W/ 7/16" HEAD OR 7/8" LONG 16 GA. STAPLES  
AT 6" O.C. EACH WAY.

**NOTE:**  
WHERE STUCCO IS BEING APPLIED TO WOOD CONSTRUCTION:  
THE STUCCO APPLICATION SHALL MEET THE APPLICATION  
REQUIREMENTS OF ASTM C926 AND ASTM C1063. FBC 2510

1 BUILDING SECTION  
A9.1 SCALE: 3/4" = 1'-0"

 **Always Blue PPG, 1156-3**

**355.1 SQ FT** 

EXTERIOR PAVERS				
LOCATION	MANUFACTURER	COLOR	SIZE	PATTERN
WALKWAY	TREMOR	SIERRA	4x8	HERRINGBONE 45

WALL TILE LEGEND - MEN & WOMEN RESTROOMS					
	MANUFACTURER	MODEL #, COLOR	SIZE	DIRECTION	GROUT
①	DAL TILE	RITTENHOUSE SQUARE - COVEBASE #A-3361 COLOR: BISQUIT K175	3' x 6'	STRAIGHT (1 ROW AT BASE)	BRIGHT WHITE #381
②	DAL TILE	RITTENHOUSE SQUARE - NON-BEVEL WALL TILE COLOR: BISQUIT K175	3' x 6'	45 DEGREE HERRING BONE	BRIGHT WHITE #381
③	DAL TILE	RITTENHOUSE SQUARE - NON-BEVEL WALL TILE COLOR: BISQUIT K175	3' x 6'	HORIZONTAL RUNNING BOND - 1/2 OFFSET (5 ROWS HIGH ABOVE HERRING BONE)	BRIGHT WHITE #381
④	DAL TILE	RITTENHOUSE SQUARE - WALL BULLNOSE S-4369 WALL BULLNOSE CORNER RIGHT WALL BULLNOSE CORNER LEFT COLOR: BISQUIT K175	3' x 6' 3' x 6' 3' x 6'	STRAIGHT (1 ROW ON TOP OF RUNNING BOND)	BRIGHT WHITE #381

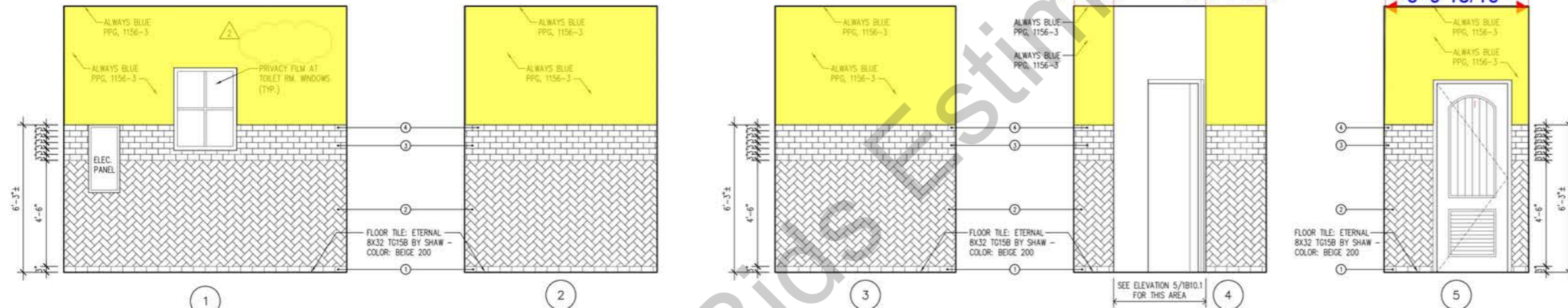
INTERIOR PAINT COLORS		
ROOM	MANUFACTURER	COLOR
MEN AND WOMEN RESTROOMS WALLS	PPG PORTER PAINTS	ALWAYS BLUE PPG, 1156-3
MEN AND WOMEN RESTROOMS CEILING	PPG PORTER PAINTS	ALWAYS BLUE PPG, 1156-3

NOTES:  
ORANGE PEEL DRYWALL TEXTURE ON ALL OTHER WALLS.  
KNOCKDOWN DRYWALL FINISH ON CEILING.

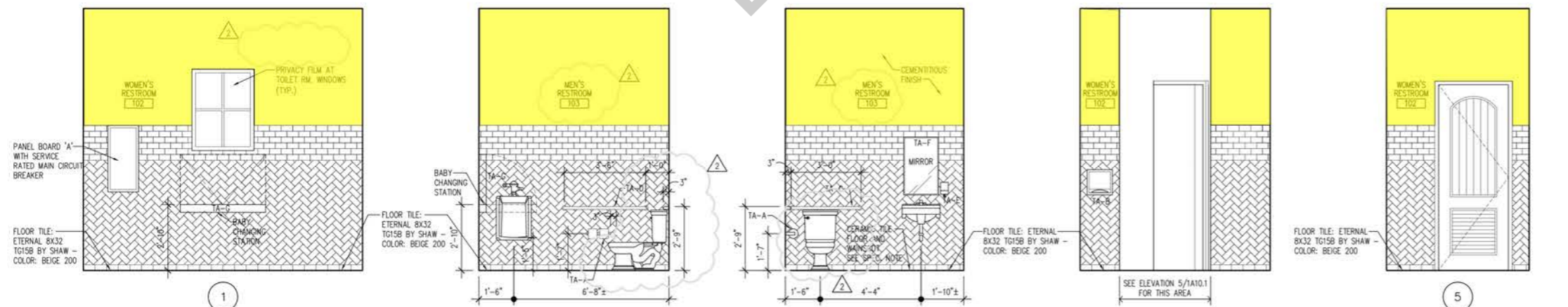
TOILET FIXTURE SCHEDULE		
	MANUFACTURER	MODEL #, COLOR
HANDICAPPED LAVATORIES	KOHLER	MODEL: 1997-4-0 BRENHAM COLOR: WHITE
SINK FAUCETS	MOEN	MODEL: L4621 CHATEAU COLOR: CHROME
COMMODOES	KOHLER	MODEL: K-3999-D HIGHLINE COLOR: WHITE
MEN'S URINAL	KOHLER	MODEL: BARDON HIGH-EFFICIENCY URINAL (HEU) COLOR: WHITE

TOILET ACCESSORIES LEGEND	
TA-A	TOILET PAPER DISPENSER BY BOBRICK, B-2740, TOILET TISSUE DISPENSER FOR TWO ROLLS. FINISH: CAST ALUMINUM SATIN
TA-B	TOWEL DISPENSER / WASTE RECEPTACLE BY BOBRICK, B-3699, SURFACE MOUNTED. FINISH: SATIN - STAINLESS STEEL
TA-C	GRAB BAR BY BOBRICK B-5806x36" STRAIGHT GRAB BAR. FINISH: SATIN-STAINLESS STEEL
TA-D	GRAB BAR BY BOBRICK B-5806x42" STRAIGHT GRAB BAR. FINISH: SATIN-STAINLESS STEEL
TA-E	SOAP DISPENSER BY GAMCO, G-950SA, SURFACE MOUNTED. FINISH: SATIN - STAINLESS STEEL
TA-F	MIRROR BY GAMCO, FT-18x36-T FIXED POSITION TILT MIRROR. FRAME FINISH: STAINLESS STEEL, SATIN.
TA-G	BABY CHANGING STATION BY KOALA KARE PRODUCTS, KB200-05 HORIZONTAL WALL MOUNTED BABY CHANGING STATION. COLOR: GRANITE

MEN AND WOMEN'S RESTROOM FLOOR TILE SPEC:  
MANUFACTURER: SHAW FLOORS  
GLAZED PORCELAIN TILE: ETERNAL TG15B  
COLOR: 200 BEIGE  
MODULE SIZE: 8 INCHES BY 32 INCHES  
DIRECTION: 1/3 OFFSET FRONT TO BACK  
GROUT COLOR: KHAKI #186



INTERIOR ELEVATIONS - CABANA WALL TILE  
A10.1 SCALE: 3/8" = 1'-0"



INTERIOR ELEVATIONS - CABANA  
A10.1 SCALE: 3/8" = 1'-0"