

BIDS ESTIMATING

Client: (Hidden for Privacy)
 Project Name: (Hidden for Privacy)
 Project ID: (Hidden for Privacy)
 Last Updated: 13/09/2021



Website: bidsestimating.com
 Email: info@bidsestimating.com
 Contact: +1 (832) 346 0507

Quantity Takeoff Sheet Metal Framing Takeoff

ITEM #	REF. SHEET	DETAIL	CSI SECT	Sub Contractor	DESCRIPTION	QTY.	WASTAGE	QTY WITH WASTAGE	UNIT	UNIT LABOR HOURS	TOTAL LABOR HOURS	PER HOUR LABOR RATE	TOTAL LABOR COST	UNIT MATERIAL COST	TOTAL MATERIAL COST	ITEM COST	TRADE COST
\$ 35,150																	
			DIV-01	General													
					Plan Design and Permitting												
1			DIV-01	General Requirements	Architecture (Assumed By Owner)	1	0%	1	LS	-	-	\$ 25.0	\$ -			\$ -	
2			DIV-01	General Requirements	Engineering (Assumed By Owner)	1	0%	1	LS	-	-	\$ 25.0	\$ -			\$ -	
3			DIV-01	General Requirements	Surveying	9,073	5%	9,527	SF	-	-	\$ 25.0	\$ -			\$ -	
4			DIV-01	General Requirements	Soils Report (Assumed By Owner)	9,073	0%	9,073	LS	-	-	\$ 25.0	\$ -			\$ -	
5			DIV-01	General Requirements	Geological Report (Assumed By Owner)	9,073	0%	9,073	LS	-	-	\$ 25.0	\$ -			\$ -	
6			DIV-01	General Requirements	Concrete Testing	1	0%	1	LS	-	-	\$ 25.0	\$ -			\$ -	
7			DIV-01	General Requirements	Permit Running (Assumed By Owner)	1	0%	1	LS	-	-	\$ 25.0	\$ -			\$ -	
8			DIV-01	General Requirements	Permits (Based on interior finish area)	14,101	5%	14,806	SF	-	-	\$ 25.0	\$ -			\$ -	
9			DIV-01	General Requirements	Plan Coordination	1	0%	1	LS	-	-	\$ 25.0	\$ -			\$ -	
10			DIV-01	General Requirements	Roof Inspection	9,073	5%	9,527	SF	-	-	\$ 25.0	\$ -			\$ -	
11			DIV-01	General Requirements	Blueprints	9,073	5%	9,527	SF	0.0076	72.09	\$ 25.0	\$ 1,802.3			\$ 1,802	
					Utilities												
12			DIV-01	General Requirements	Utilities during construction (Based on interior finish area)	14,101	5%	14,806	SF	-	-	\$ 25.0	\$ -			\$ -	
13			DIV-01	General Requirements	Port-o-Potty (Based on interior finish area)	14,101	5%	14,806	SF	-	-	\$ 25.0	\$ -			\$ -	
14			DIV-01	General Requirements	Temporary Power (Based on interior finish area)	14,101	5%	14,806	SF	-	-	\$ 25.0	\$ -			\$ -	
					Equipment and Tools												
15			DIV-01	General Requirements	Tool Rentals	1	0%	1	LS	-	-	\$ 25.0	\$ -			\$ -	
16			DIV-01	General Requirements	Tool Shed	1	0%	1	LS	-	-	\$ 25.0	\$ -			\$ -	
17			DIV-01	General Requirements	Dust Control	9,073	5%	9,527	SF	-	-	\$ 25.0	\$ -			\$ -	
18			DIV-01	General Requirements	Ice, Water, Beverages	1	0%	1	LS	-	-	\$ 25.0	\$ -			\$ -	
19			DIV-01	General Requirements	Garbage Dumpster / Trash Containers	1	0%	1	LS	-	-	\$ 25.0	\$ -			\$ -	
20			DIV-01	General Requirements	Mobilization	14,101	5%	14,806	SF	0.0801	1,185.41	\$ 25.0	\$ 29,635.2			\$ 29,635	
					Signage and Promotion												
21			DIV-01	General Requirements	Job Signs	1	0%	1	LS	-	-	\$ 25.0	\$ -			\$ -	
22			DIV-01	General Requirements	Job Photos	1	0%	1	LS	-	-	\$ 25.0	\$ -			\$ -	
23			DIV-01	General Requirements	Signage	1	0%	1	LS	-	-	\$ 25.0	\$ -			\$ -	
24			DIV-01	General Requirements	Promotion/entertainment	1	0%	1	LS	-	-	\$ 25.0	\$ -			\$ -	
25			DIV-01	General Requirements	Misc.	1	0%	1	LS	-	-	\$ 25.0	\$ -			\$ -	
					Cleaning and Final												
26			DIV-01	General Requirements	Trash	14,101	5%	14,806	SF	-	-	\$ 25.0	\$ -			\$ -	
27			DIV-01	General Requirements	Final Cleaning	14,101	5%	14,806	SF	0.01	148.50	\$ 25.0	\$ 3,712.5			\$ 3,713	

BIDS ESTIMATING

Client: (Hidden for Privacy)
 Project Name: (Hidden for Privacy)
 Project ID: (Hidden for Privacy)
 Last Updated: 13/09/2021



Website: bidsestimating.com
 Email: info@bidsestimating.com
 Contact: +1 (832) 346 0507

Quantity Takeoff Sheet

Metal Framing Takeoff

ITEM #	REF. SHEET	DETAIL	CSI SECT	Sub Contractor	DESCRIPTION	QTY.	WASTE	QTY WITH WASTAGE	UNIT	UNIT LABOR HOURS	TOTAL LABOR HOURS	PER HOUR LABOR RATE	TOTAL LABOR COST	UNIT MATERIAL COST	TOTAL MATERIAL COST	ITEM COST	TRADE COST
28			DIV-01	General Requirements	Window washing (rough # of windows)	1	0%	1	LS		-	\$ 25.0	\$ -			\$ -	
29			DIV-01	General Requirements	Punch List Items	1	0%	1	LS		-	\$ 25.0	\$ -			\$ -	
					Bonds, Insurance, Legal												
30			DIV-01	General Requirements	Casualty Insurance	1	0%	1	LS		-	\$ 25.0	\$ -			\$ -	
31			DIV-01	General Requirements	Medical Insurance	1	0%	1	LS		-	\$ 25.0	\$ -			\$ -	
32			DIV-01	General Requirements	General Liability Insurance	1	0%	1	LS		-	\$ 25.0	\$ -			\$ -	
					Supervision, Temporary Control & Facilities												
33			DIV-01	General Requirements	Project Management	14,101	5%	14,806	SF	0.0244	361.52	\$ 25.0	\$ 9,037.9			\$ 9,038	
34			DIV-01	General Requirements	Supervision	14,101	5%	14,806	SF	0.057	844.63	\$ 25.0	\$ 21,115.7			\$ 21,116	
35			DIV-01	General Requirements	Hardscape Supervision	-	5%	-	SF		-	\$ 25.0	\$ -			\$ -	
36			DIV-01	General Requirements	Softscape Supervision	-	5%	-	SF		-	\$ 25.0	\$ -			\$ -	
37			DIV-01	General Requirements	Temporary Control & Facilities	14,101	5%	14,806	SF		-	\$ 25.0	\$ -			\$ -	
			DIV-05	Metals													\$ 452,983
					Steel Column												
38	S1-1	S1-1	DIV-05	Structural Steel	HSS6x6x1/4 (BP2)- 20'H	2,280	5%	2,394	LBS	0.010	23.94	\$ 39.4	\$ 942.3	\$ 2.5	\$ 5,985.0	\$ 6,927	
39	S1-1	S1-1	DIV-05	Structural Steel	HSS6x6x1/4 (BP1)- 20'H	380	5%	399	LBS	0.010	3.99	\$ 39.4	\$ 157.0	\$ 2.5	\$ 997.5	\$ 1,155	
40	S1-1	S1-1	DIV-05	Structural Steel	HSS6x6x1/4 (BP1)- 27'H	1,539	5%	1,616	LBS	0.010	16.16	\$ 39.4	\$ 636.0	\$ 2.5	\$ 4,039.9	\$ 4,676	
41	S1-1	S1-1	DIV-05	Structural Steel	HSS6x6x3/8 (BP2)- 20'H	548	5%	575	LBS	0.010	5.75	\$ 39.4	\$ 226.5	\$ 2.5	\$ 1,438.5	\$ 1,665	
42	S1-1	S1-1	DIV-05	Structural Steel	HSS6x6x3/8 (BP2)- 23'H	630	5%	662	LBS	0.010	6.62	\$ 39.4	\$ 260.4	\$ 2.5	\$ 1,654.3	\$ 1,915	
43	S1-1	S1-1	DIV-05	Structural Steel	HSS6x6x1/2 (BP2)- 23'H	2,422	5%	2,543	LBS	0.010	25.43	\$ 39.4	\$ 1,000.9	\$ 2.5	\$ 6,357.5	\$ 7,358	
44	S1-1	S1-1	DIV-05	Structural Steel	HSS6x6x1/4 (BP2)- 28'H	1,064	5%	1,117	LBS	0.010	11.17	\$ 39.4	\$ 439.7	\$ 2.5	\$ 2,793.0	\$ 3,233	
45	S1-1	S1-1	DIV-05	Structural Steel	HSS6x6x3/8 (BP1)- 27'H	740	0	777	LBS	0.010	7.77	\$ 39.4	\$ 305.7	\$ 2.5	\$ 1,942.0	\$ 2,248	
46	S1-1	S1-1	DIV-05	Structural Steel	HSS6x6x3/8 (BP2)- 27'H	2,959	5%	3,107	LBS	0.010	31.07	\$ 39.4	\$ 1,223.0	\$ 2.5	\$ 7,767.9	\$ 8,991	
47	S1-1	S1-1	DIV-05	Structural Steel	HSS6x6x1/4 (BP1)- 28'H	1,064	5%	1,117	LBS	0.010	11.17	\$ 39.4	\$ 439.7	\$ 2.5	\$ 2,793.0	\$ 3,233	
48	S1-1	S1-1	DIV-05	Structural Steel	HSS6x6x3/8 (BP1)- 28'H	767	5%	806	LBS	0.010	8.06	\$ 39.4	\$ 317.1	\$ 2.5	\$ 2,013.9	\$ 2,331	
49	S1-2 - S1-4	S1-2 - S1-4	DIV-05	Structural Steel	HSS4x4x1/4 Steel Post Up-8'H	878	0	922	LBS	0.000	-	\$ -	\$ -	\$ -	\$ -	\$ -	
50	S1-2 - S1-4	S1-2 - S1-4	DIV-05	Structural Steel	HSS6x6x1/4 Steel Post Up-8'H	608	0	638	LBS	0.000	-	\$ -	\$ -	\$ -	\$ -	\$ -	
					Base/Cap Plate												
51	S1-1	S3-1	DIV-05	Structural Steel	BP1- 12"x12"x3/4" Base Plate	8	0%	8	EA	1.741	13.93	\$ 39.4	\$ 548.2	\$ 121.9	\$ 975.4	\$ 1,524	
52	S1-1	S3-1	DIV-05	Structural Steel	BP2- 13"x13"x3/4" Base Plate	30	0%	30	EA	1.854	55.62	\$ 39.4	\$ 2,189.2	\$ 141.8	\$ 4,254.0	\$ 6,443	
53	S1-1	S3-1	DIV-05	Structural Steel	9"x9"x3/4" Cap Plate	38	0%	38	EA	1.236	46.97	\$ 39.4	\$ 1,848.7	\$ 71.7	\$ 2,725.0	\$ 4,574	
					Steel Beam												
54	S1-2 - S1-4	S1-2 - S1-4	DIV-05	Structural Steel	W24x55	871	5%	915	LBS	0.010	9.15	\$ 39.4	\$ 360.0	\$ 2.5	\$ 2,286.9	\$ 2,647	
55	S1-2 - S1-4	S1-2 - S1-4	DIV-05	Structural Steel	W12x19	6,736	5%	7,073	LBS	0.010	70.73	\$ 39.4	\$ 2,784.0	\$ 2.5	\$ 17,682.7	\$ 20,467	
56	S1-2 - S1-4	S1-2 - S1-4	DIV-05	Structural Steel	W16x26	16,610	5%	17,440	LBS	0.010	174.40	\$ 39.4	\$ 6,864.4	\$ 2.5	\$ 43,600.1	\$ 50,465	
57	S1-2 - S1-4	S1-2 - S1-4	DIV-05	Structural Steel	W16x31	1,436	5%	1,508	LBS	0.010	15.08	\$ 39.4	\$ 593.4	\$ 2.5	\$ 3,769.3	\$ 4,363	

BIDS ESTIMATING

Client: (Hidden for Privacy)
 Project Name: (Hidden for Privacy)
 Project ID: (Hidden for Privacy)
 Last Updated: 13/09/2021



Website: bidsestimating.com
 Email: info@bidsestimating.com
 Contact: +1 (832) 346 0507

Quantity Takeoff Sheet

Metal Framing Takeoff

ITEM #	REF. SHEET	DETAIL	CSI SECT	Sub Contractor	DESCRIPTION	QTY.	WASTAGE	QTY WITH WASTAGE	UNIT	UNIT LABOR HOURS	TOTAL LABOR HOURS	PER HOUR LABOR RATE	TOTAL LABOR COST	UNIT MATERIAL COST	TOTAL MATERIAL COST	ITEM COST	TRADE COST
58	S1-2 - S1-4	S1-2 - S1-4	DIV-05	Structural Steel	W12x26	1,884	5%	1,978	LBS	0.010	19.78	\$ 39.4	\$ 778.5	\$ 2.5	\$ 4,944.7	\$ 5,723	
59	S1-2 - S1-4	S1-2 - S1-4	DIV-05	Structural Steel	W14x22	2,294	5%	2,409	LBS	0.010	24.09	\$ 39.4	\$ 948.1	\$ 2.5	\$ 6,022.2	\$ 6,970	
60	S1-2 - S1-4	S1-2 - S1-4	DIV-05	Structural Steel	W24x84	2,945	5%	3,092	LBS	0.010	30.92	\$ 39.4	\$ 1,217.1	\$ 2.5	\$ 7,730.7	\$ 8,948	
61	S1-2 - S1-4	S1-2 - S1-4	DIV-05	Structural Steel	W14x26	644	5%	676	LBS	0.010	6.76	\$ 39.4	\$ 266.1	\$ 2.5	\$ 1,689.9	\$ 1,956	
62	S1-2 - S1-4	S1-2 - S1-4	DIV-05	Structural Steel	W16x31	3,043	5%	3,195	LBS	0.010	31.95	\$ 39.4	\$ 1,257.7	\$ 2.5	\$ 7,988.6	\$ 9,246	
63	S1-2 - S1-4	S1-2 - S1-4	DIV-05	Structural Steel	W21x50	1,660	5%	1,743	LBS	0.010	17.43	\$ 39.4	\$ 686.0	\$ 2.5	\$ 4,357.5	\$ 5,044	
64	S1-2 - S1-4	S1-2 - S1-4	DIV-05	Structural Steel	W18x35	627	5%	658	LBS	0.010	6.58	\$ 39.4	\$ 258.9	\$ 2.5	\$ 1,644.6	\$ 1,903	
65	S1-2 - S1-4	S1-2 - S1-4	DIV-05	Structural Steel	W8x10	274	5%	288	LBS	0.010	2.88	\$ 39.4	\$ 113.2	\$ 2.5	\$ 719.0	\$ 832	
66	S1-2 - S1-4	S1-2 - S1-4	DIV-05	Structural Steel	W21x44	3,952	5%	4,150	LBS	0.010	41.50	\$ 39.4	\$ 1,633.3	\$ 2.5	\$ 10,374.2	\$ 12,008	
67	S1-2 - S1-4	S1-2 - S1-4	DIV-05	Structural Steel	HSS4x4x3/8	2,344	5%	2,461	LBS	0.010	24.61	\$ 39.4	\$ 968.7	\$ 2.5	\$ 6,152.6	\$ 7,121	
68	S1-2 - S1-4	S1-2 - S1-4	DIV-05	Structural Steel	HSS4x4x1/4	1,670	5%	1,753	LBS	0.010	17.53	\$ 39.4	\$ 690.2	\$ 2.5	\$ 4,383.6	\$ 5,074	
69	S1-2 - S1-4	S1-2 - S1-4	DIV-05	Structural Steel	HSS5x5x1/4	852	5%	894	LBS	0.010	8.94	\$ 39.4	\$ 352.0	\$ 2.5	\$ 2,235.5	\$ 2,587	
70	S1-2 - S1-4	S1-2 - S1-4	DIV-05	Structural Steel	HSS6x6x1/4	2,711	5%	2,847	LBS	0.010	28.47	\$ 39.4	\$ 1,120.5	\$ 2.5	\$ 7,117.2	\$ 8,238	
71	S1-2 - S1-4	S1-2 - S1-4	DIV-05	Structural Steel	HSS8x6x1/4	1,092	5%	1,147	LBS	0.010	11.47	\$ 39.4	\$ 451.5	\$ 2.5	\$ 2,867.7	\$ 3,319	
72	S1-2 - S1-4	S1-2 - S1-4	DIV-05	Structural Steel	HSS12x6x1/4	2,145	5%	2,253	LBS	0.010	22.53	\$ 39.4	\$ 886.6	\$ 2.5	\$ 5,631.5	\$ 6,518	
73	S1-2 - S1-4	S1-2 - S1-4	DIV-05	Structural Steel	HSS6x6x3/8	2,022	5%	2,123	LBS	0.010	21.23	\$ 39.4	\$ 835.6	\$ 2.5	\$ 5,307.3	\$ 6,143	
74	S1-2 - S1-4	S1-2 - S1-4	DIV-05	Structural Steel	HSS12x6x3/8	2,385	5%	2,504	LBS	0.010	25.04	\$ 39.4	\$ 985.8	\$ 2.5	\$ 6,261.2	\$ 7,247	
75	S1-2 - S1-4	S1-2 - S1-4	DIV-05	Structural Steel	HSS18x6x3/8	2,789	5%	2,929	LBS	0.010	29.29	\$ 39.4	\$ 1,152.7	\$ 2.5	\$ 7,321.7	\$ 8,474	
					Steel Joist												
76	S1-2 - S1-4	S1-2 - S1-4	DIV-05	Structural Steel	40LH15 Steel Joist	16,187	5%	16,996	LBS	0.010	169.96	\$ 39.4	\$ 6,689.6	\$ 2.5	\$ 42,490.0	\$ 49,180	
77	S1-2 - S1-4	S1-2 - S1-4	DIV-05	Structural Steel	40LH15 SP Steel Joist	11,812	5%	12,402	LBS	0.010	124.02	\$ 39.4	\$ 4,881.6	\$ 2.5	\$ 31,006.0	\$ 35,888	
78	S1-2 - S1-4	S1-2 - S1-4	DIV-05	Structural Steel	16K2 Steel Joist	1,590	5%	1,670	LBS	0.010	16.70	\$ 39.4	\$ 657.3	\$ 2.5	\$ 4,175.0	\$ 4,832	
79	S1-2 - S1-4	S1-2 - S1-4	DIV-05	Structural Steel	18K4 Steel Joist	3,587	5%	3,767	LBS	0.010	37.67	\$ 39.4	\$ 1,482.6	\$ 2.5	\$ 9,416.9	\$ 10,900	
					Metal Deck												
80	S1-2 - S1-4	S1-2 - S1-4	DIV-05	Structural Steel	2" 18 GA Composite Metal Floor Deck	3,259	5%	3,422	SF	0.045	153.97	\$ 39.4	\$ 6,060.5	\$ 2.9	\$ 9,888.6	\$ 15,949	
81	S1-2 - S1-4	S1-2 - S1-4	DIV-05	Structural Steel	1 1/2" 20 GA Type B Galvanized Roof Deck	8,987	5%	9,436	SF	0.045	424.63	\$ 39.4	\$ 16,713.5	\$ 2.2	\$ 20,948.5	\$ 37,662	
					Misc. Plates/Angles												
82	S5-5 - S5-12	S5-5 - S5-12	DIV-05	Structural Steel	3/8" Min Gusset Plate (Size Confirmed By Supplier)	51	0%	51	EA	1.238	63.14	\$ 39.4	\$ 2,485.1	\$ 64.0	\$ 3,265.5	\$ 5,751	
83	S5-5 - S5-12	S5-5 - S5-12	DIV-05	Structural Steel	4x4x3/16" Cover Plate	34	0%	34	EA	0.361	12.27	\$ 39.4	\$ 483.1	\$ 9.7	\$ 328.1	\$ 811	
84	S5-5 - S5-12	S5-5 - S5-12	DIV-05	Structural Steel	6x6x3/16" Cover Plate	22	0%	22	EA	0.397	8.73	\$ 39.4	\$ 343.8	\$ 15.3	\$ 335.5	\$ 679	
85	S5-5 - S5-12	S5-5 - S5-12	DIV-05	Structural Steel	5x5x3/16" Cover Plate	6	0%	6	EA	0.375	2.25	\$ 39.4	\$ 88.6	\$ 12.2	\$ 73.0	\$ 162	
86	S5-5 - S5-12	S5-5 - S5-12	DIV-05	Structural Steel	3"x3"x1/4" Plate	1	0%	1	EA	0.326	0.33	\$ 39.4	\$ 12.8	\$ 8.7	\$ 8.7	\$ 22	
87	S5-5 - S5-12	S5-5 - S5-12	DIV-05	Structural Steel	PL 3/8"x7"x1'-0"W	1	0%	1	EA	0.825	0.83	\$ 39.4	\$ 32.5	\$ 51.1	\$ 51.1	\$ 84	
88	S5-5 - S5-12	S5-5 - S5-12	DIV-05	Structural Steel	L4x4x1/2x0'-8"	1	0%	1	EA	0.536	0.54	\$ 39.4	\$ 21.1	\$ 17.1	\$ 17.1	\$ 38	
89	S5-5 - S5-12	S5-5 - S5-12	DIV-05	Structural Steel	L 1'-8" x 3" x3/8" Stiffener Plate	1	0%	1	EA	0.631	0.63	\$ 39.4	\$ 24.8	\$ 21.1	\$ 21.1	\$ 46	
90	S5-5 - S5-12	S5-5 - S5-12	DIV-05	Structural Steel	PL1/2"x5"x8"	6	0%	6	EA	0.774	4.64	\$ 39.4	\$ 182.8	\$ 28.7	\$ 172.4	\$ 355	
91	S5-5 - S5-12	S5-5 - S5-12	DIV-05	Structural Steel	L4x4x1/4 Kickers (4'-0"L)	12	0%	12	EA	1.235	14.82	\$ 39.4	\$ 583.3	\$ 38.5	\$ 462.0	\$ 1,045	
92	S5-5 - S5-12	S5-5 - S5-12	DIV-05	Structural Steel	4x4x1/4" Cap Plate	6	0%	6	EA	0.394	2.36	\$ 39.4	\$ 93.0	\$ 10.7	\$ 63.9	\$ 157	
93	S5-5 - S5-12	S5-5 - S5-12	DIV-05	Structural Steel	6x6x1/2" Cap Plate	2	0%	2	EA	0.745	1.49	\$ 39.4	\$ 58.6	\$ 26.5	\$ 53.0	\$ 112	

BIDS ESTIMATING

Client: (Hidden for Privacy)
 Project Name: (Hidden for Privacy)
 Project ID: (Hidden for Privacy)
 Last Updated: 13/09/2021

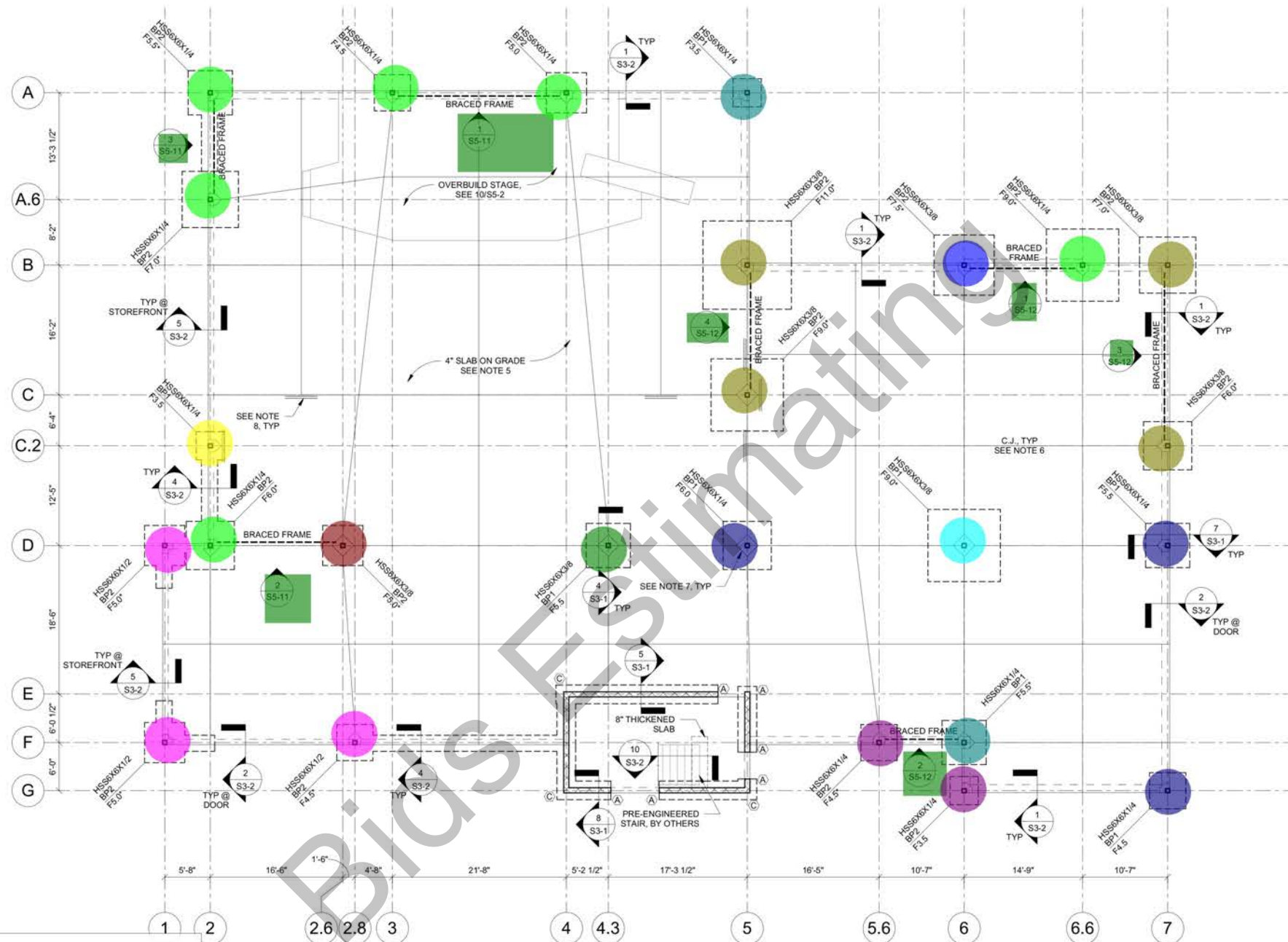


Website: bidsestimating.com
 Email: info@bidsestimating.com
 Contact: +1 (832) 346 0507

Quantity Takeoff Sheet

Metal Framing Takeoff

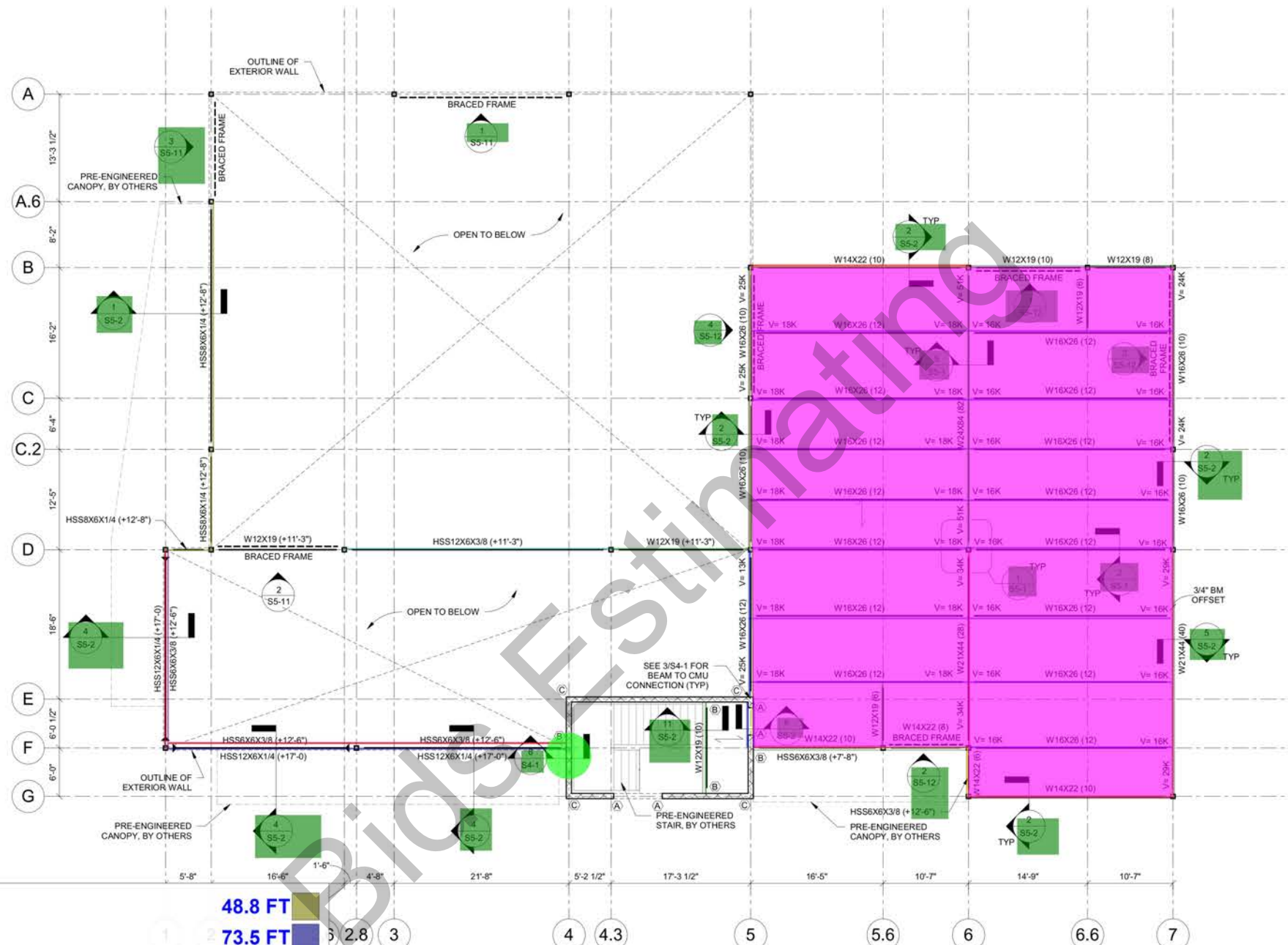
ITEM #	REF. SHEET	DETAIL	CSI SECT	Sub Contractor	DESCRIPTION	QTY.	WASTAGE	QTY WITH WASTAGE	UNIT	UNIT LABOR HOURS	TOTAL LABOR HOURS	PER HOUR LABOR RATE	TOTAL LABOR COST	UNIT MATERIAL COST	TOTAL MATERIAL COST	ITEM COST	TRADE COST	
94	S5-5 - S5-12	S5-5 - S5-12	DIV-05	Structural Steel	6"x4" Stabilizer Plate (Thickness To Be Determined By Joist Supplier)	1	0%	1	EA	0.496	0.50	\$ 39.4	\$ 19.5	\$ 19.8	\$ 19.8	\$ 39		
95	S5-5 - S5-12	S5-5 - S5-12	DIV-05	Structural Steel	L4x3x1/4 Cont.	94	5%	99	LBS	0.010	0.99	\$ 39.4	\$ 38.9	\$ 2.5	\$ 247.3	\$ 286		
96	S5-5 - S5-12	S5-5 - S5-12	DIV-05	Structural Steel	L5x5x3/8 Cont.	6,125	5%	6,432	LBS	0.010	64.32	\$ 39.4	\$ 2,531.5	\$ 2.5	\$ 16,079.2	\$ 18,611		
97	S5-5 - S5-12	S5-5 - S5-12	DIV-05	Structural Steel	L 6x4x3/8 Cont. Bent Plate	905	5%	950	LBS	0.010	9.50	\$ 39.4	\$ 373.9	\$ 2.5	\$ 2,374.7	\$ 2,749		
98	S5-5 - S5-12	S5-5 - S5-12	DIV-05	Structural Steel	L 3x2x3/16 Bent Plate	2,291	5%	2,406	LBS	0.010	24.06	\$ 39.4	\$ 947.0	\$ 2.5	\$ 6,015.1	\$ 6,962		
99	S5-5 - S5-12	S5-5 - S5-12	DIV-05	Structural Steel	L4x4x1/4 Cont. Plate	573	5%	602	LBS	0.010	6.02	\$ 39.4	\$ 236.8	\$ 2.5	\$ 1,504.0	\$ 1,741		
###	S5-5 - S5-12	S5-5 - S5-12	DIV-05	Structural Steel	PL 1/4"x5" Cont.	51	5%	54	LBS	0.010	0.54	\$ 39.4	\$ 21.1	\$ 2.5	\$ 133.9	\$ 155		
###	S5-5 - S5-12	S5-5 - S5-12	DIV-05	Structural Steel	PL 1/4"x4" Cont.	75	5%	79	LBS	0.010	0.79	\$ 39.4	\$ 31.0	\$ 2.5	\$ 196.9	\$ 228		
###	S5-5 - S5-12	S5-5 - S5-12	DIV-05	Structural Steel	L2-1/2x2-1/2x1/4 Cont.	93	5%	98	LBS	0.010	0.98	\$ 39.4	\$ 38.4	\$ 2.5	\$ 244.2	\$ 283		
					Stairs													
###	A5-1	A5-1	DIV-05	Structural Steel	MC 12x10.6 Steel Stringers	541	5%	568	LBS	0.010	5.68	\$ 39.4	\$ 223.5	\$ 2.5	\$ 1,419.6	\$ 1,643		
###	A5-1	A5-1	DIV-05	Staircases and Railings - Metal	1 1/2" Dia. 42" High Steel Pipe Guardrail	48	5%	50	LF	0.685	34.52	\$ 31.5	\$ 1,087.5	\$ 29.6	\$ 1,489.3	\$ 2,577		
###	A5-1	A5-1	DIV-05	Staircases and Railings - Metal	1 1/2" Dia. 36" High Steel Pipe Handrail	37	5%	39	LF	0.300	11.66	\$ 31.5	\$ 367.1	\$ 9.6	\$ 373.7	\$ 741		
###			DIV-05	Structural Steel	Scaffolding/Lifts Interior RCP Area for Structural Beams	17,485	5%	18,359	SF	0.006	110.16	\$ 39.4	\$ 4,335.7		\$ -	\$ 4,336		
###			DIV-05	Structural Steel	Mobilization For Steel Structural Members	60	5%	63	TONS	3.000	187.96	\$ 39.4	\$ 7,398.1		\$ -	\$ 7,398		
SUB TOTAL											Total Lab. Hours =	5,017	Total Lab. Cost	\$ 159,587	Total Material Cost	\$ 358,700	\$ 518,287	\$ 452,983
MATERIAL TAX												9.5%			\$ 34,076	\$ 34,076	\$ 34,076	
OVERHEAD ANI												25%		\$ 39,897	\$ 89,675	\$ 129,572	\$ 129,572	
TOTAL BASE BII														\$ 199,484	\$ 482,451	\$ 681,935	\$ 616,631	



1 FOUNDATION PLAN
 S1-1 1/8" = 1'-0"

- NOTES:
- SEE S0-1 FOR STRUCTURAL GENERAL NOTES.
 - SEE ARCH FOR ADDITIONAL INFORMATION AND DIMENSIONS.
 - Fx INDICATES COLUMN FOOTING. SEE 1/S3-1. TIFG = -1'-4", UNO, BASED ON T/SLAB REFERENCE ELEVATION = 0'-0".
 - BPx INDICATES COLUMN BASE PLATE. SEE 3/S3-1.
 - PROVIDE 4" SLAB ON GRADE REINFORCED WITH WWF 6x6 W2.1xW2.1 ON VAPOR BARRIER AND 4" GRANULAR BASE.
 - C.J. INDICATES SLAB CONTROL JOINT. SEE 3/S3-2 AND GENERAL NOTES FOR ADDITIONAL INFORMATION.
 - PROVIDE ISOLATION JOINT AT COLUMN. SEE 6/S3-2.
 - PROVIDE REINFORCEMENT AT RE-ENTRANT CORNERS. SEE 9/S3-2.
 - — INDICATES BRACED FRAME. SEE S5-11 AND S5-12.
 - CONTRACTOR SHALL BE RESPONSIBLE FOR COORDINATION OF ALL UTILITY AND PLUMBING LINES. SEE 11/S3-1.
 - INDICATES 8" CMU WALL REINFORCED W/ #5@32" O.C., SEE DETAILS 4/S4-1.
 - INDICATES ADDITIONAL CMU WALL REINFORCEMENT. SEE 1/S4-1.

• HSS6x6x1/4 (BP2)- 20'H	6.0 EA
• HSS6x6x1/4 (BP1)- 20'H	1.0 EA
• HSS6x6x3/8 (BP2)- 20'H	1.0 EA
• HSS6x6x1/2 (BP2)- 23'H	3.0 EA
• HSS6x6x3/8 (BP1)- 28'H	1.0 EA
• HSS6x6x3/8 (BP2)- 23'H	1.0 EA
• HSS6x6x3/8 (BP1)- 27'H	1.0 EA
• HSS6x6x3/8 (BP2)- 27'H	4.0 EA
• HSS6x6x1/4 (BP1)- 27'H	3.0 EA
• HSS6x6x1/4 (BP2)- 28'H	2.0 EA
• HSS6x6x1/4 (BP1)- 28'H	2.0 EA

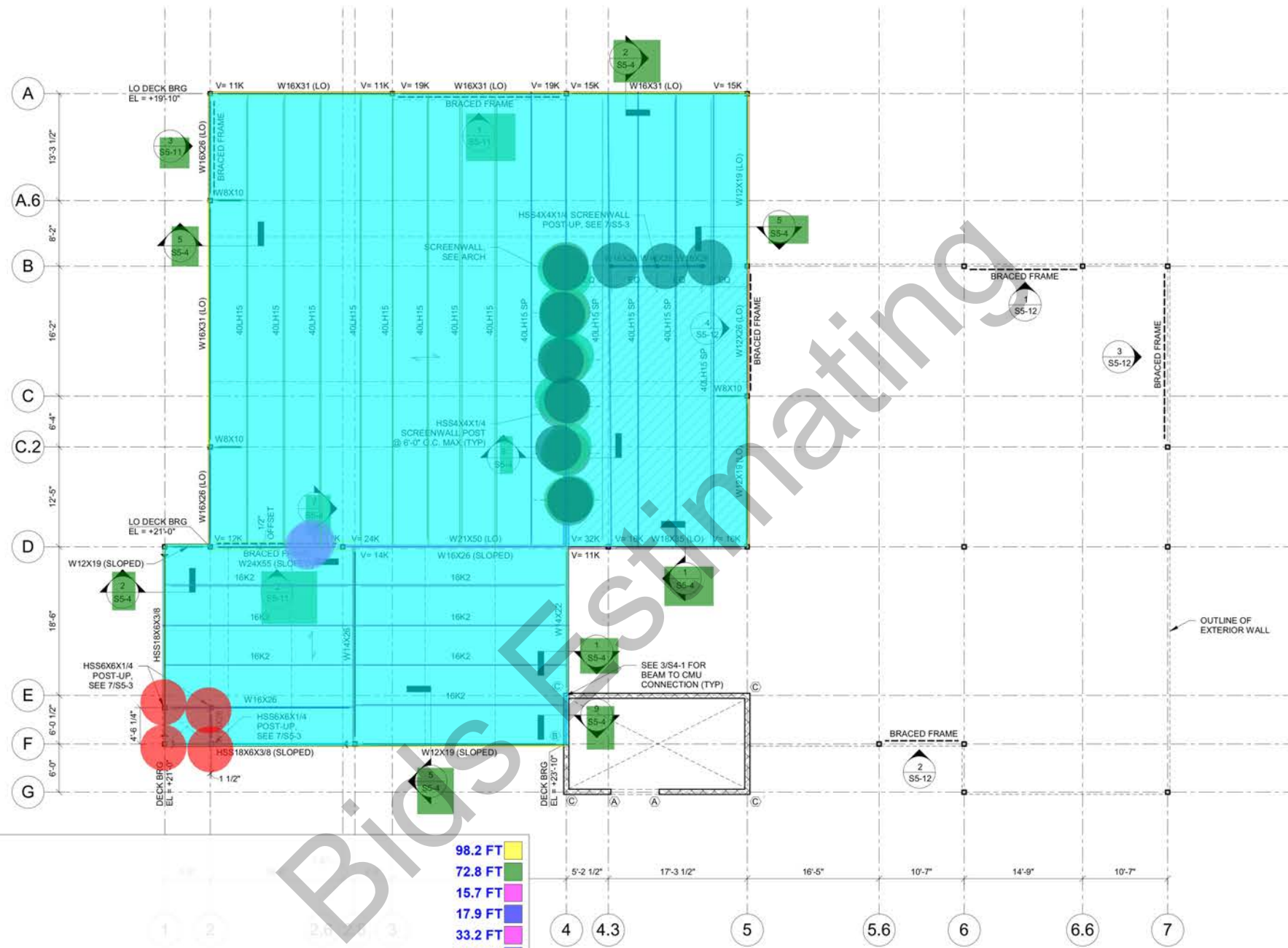


	HSS8x6x1/4	48.8 FT
	HSS12x6x1/4	73.5 FT
	HSS6x6x3/8	73.8 FT
	HSS12x6x3/8	33.1 FT
	W12x19	54.9 FT
	W16x26	471.7 FT
	W14x22	75.4 FT
	W21x44	54.7 FT
	W24x84	35.1 FT
	Composite Metal Decking	3258.7 SQ FT
	3/8"x6"x Horizontal Leg Cont. Bent Plate	73.5 FT
	PL 3/8"x7"x1'-0"W	1.0 EA
	3/16" Bent Plate	207.8 FT
	L4x4x1/4 Cont. Plate	11.2 FT

1 SECOND LEVEL FRAMING PLAN
 1/8" = 1'-0"

NOTES:

- SEE S0-1 FOR STRUCTURAL GENERAL NOTES.
- SEE ARCH FOR ADDITIONAL INFORMATION AND DIMENSIONS.
- DECK BEARING ELEVATION @ 13'-6 1/2" RELATIVE TO FIRST FLOOR REFERENCE ELEVATION = 0'-0" UNO.
- INDICATES DIRECTIONAL SPAN OF 2" 18 GA COMPOSITE FLOOR DECK W/ 3 1/2" CONCRETE (5 1/2" TOTAL DEPTH)
- W/ WWF 6x6-WX2.1xW2.1. SEE 3/S5-1.
- INDICATES BRACED FRAME. SEE S5-11 AND S5-12.
- (x) INDICATES NUMBER OF 3/4" DIA HEADED STUDS EQUALLY SPACED. SEE 11/S5-1.
- (X-X) INDICATES TOP OF STEEL ELEVATION RELATIVE TO FIRST FLOOR REFERENCE ELEVATION = 0'-0".
- INDICATES MOMENT CONNECTION. SEE 4/S5-1. CONNECTION SHALL DEVELOP FULL CAPACITY OF MEMBER.
- Vx INDICATES MAXIMUM UNFACTORED SHEAR REACTION IN KIPS. MINIMUM REACTION IS 10 KIPS. UNO.
- INDICATES OPENING IN COMPOSITE FLOOR DECK. SEE 689/S5-1.
- INDICATES 8" CMU WALL REINFORCED W/ #5@32" O.C., SEE DETAILS 4/S4-1.
- INDICATES ADDITIONAL CMU WALL REINFORCEMENT. SEE 1/S4-1.
- SEE 2&5/S4-1 FOR STANDARD LINTEL SCHEDULE.



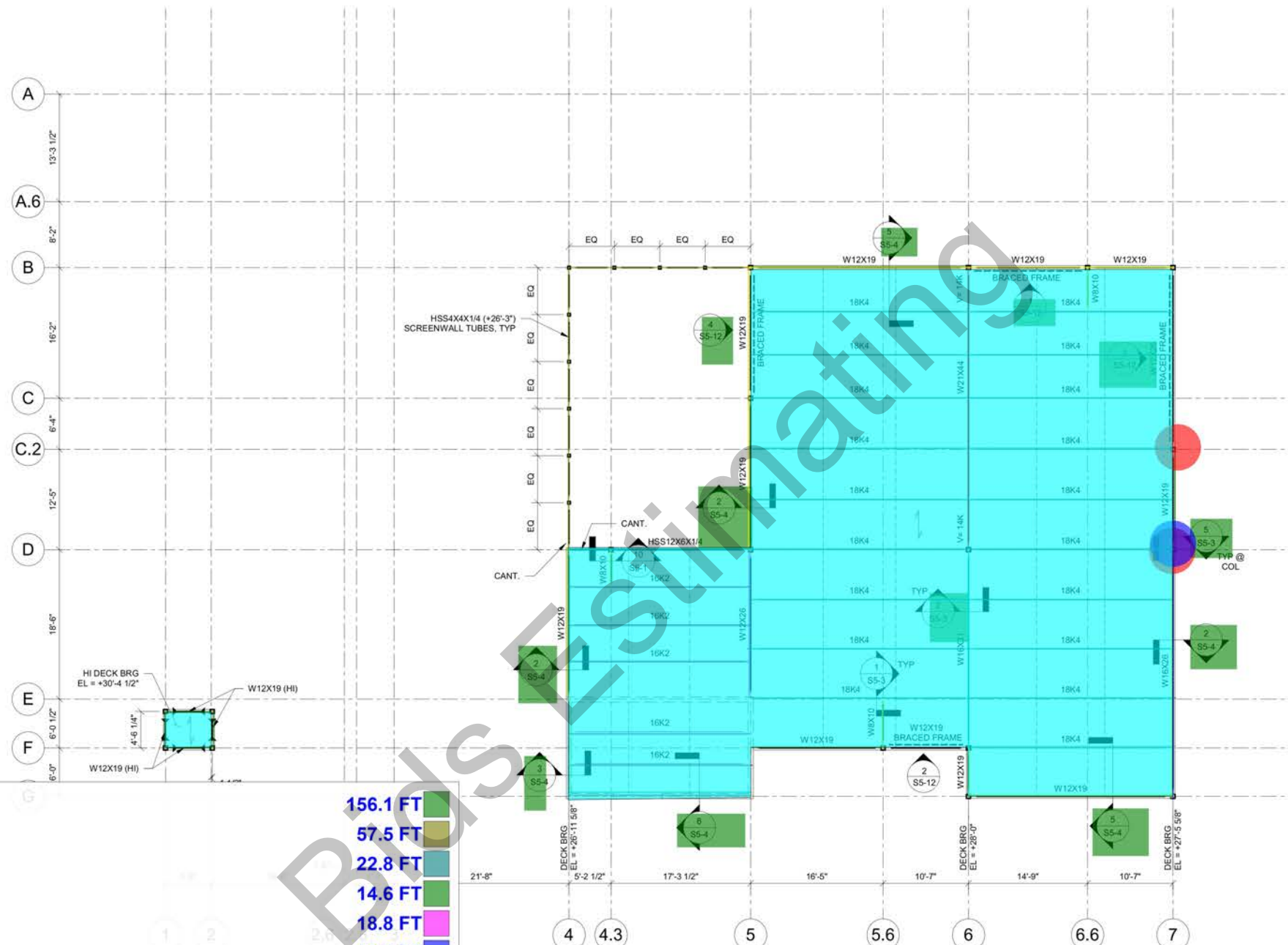
- W16x31
- W12x19
- W12x26
- W18x35
- W21x50
- W16x26
- HSS18x6x3/8
- W14x26
- W14x22
- W8x10
- 40LH15 Steel Joist
- 40LH15 SP Steel Joist
- 16K2 Steel Joist
- Metal Roof Decking
- 3/16" Bent Plate
- L4x4x1/4 Cont. Plate
- L4x4x1/2x0'-8"
- PL1/2"x5"x8"
- L4x4x1/4 Kickers (4'-0"L)
- 4x4x1/4" Cap Plate
- 3/8" Stiffner Plate
- Hss4x4x1/4 Steel Post Up
- HSS6x6x1/4 Post Up-8'H

98.2 FT	72.8 FT	15.7 FT	17.9 FT	33.2 FT	85.7 FT	48.1 FT	24.8 FT	18.7 FT	12.8 FT	449.6 FT	337.5 FT	176.5 FT	5018.2 SQ FT	335.9 FT	75.6 FT	1.0 EA	6.0 EA	12.0 EA	6.0 EA	1.0 EA	9.0 EA	4.0 EA
---------	---------	---------	---------	---------	---------	---------	---------	---------	---------	----------	----------	----------	--------------	----------	---------	--------	--------	---------	--------	--------	--------	--------

JOIST ROOF FRAMING PLAN
8" = 1'-0"

NOTES:

- SEE S0-1 FOR STRUCTURAL GENERAL NOTES.
- SEE ARCH FOR ADDITIONAL INFORMATION AND DIMENSIONS.
- DECK BEARING ELEVATION SHOWN RELATIVE TO FIRST FLOOR REFERENCE ELEVATION = 0'-0" UNO.
- INDICATES DIRECTIONAL SPAN OF 1 1/2" 20 GA TYPE B GALVANIZED ROOF DECK, SEE 3/S5-3.
- INDICATES BRACED FRAME, SEE S5-11 AND S5-12.
- ▶ INDICATES MOMENT CONNECTION, SEE 4/S5-1. CONNECTION SHALL DEVELOP FULL CAPACITY OF MEMBER.
- V=x INDICATES MAXIMUM UNFACTORED SHEAR REACTION IN KIPS, MINIMUM REACTION IS 10 KIPS, UNO.
- (X-X') INDICATES TOP OF STEEL ELEVATION RELATIVE TO FIRST FLOOR REFERENCE ELEVATION = 0'-0"
- P=x INDICATES MAXIMUM UNFACTORED AXIAL FORCE TO BE TRANSFERRED TO BRACE THROUGH A SLIP-CRITICAL CONNECTION.
- SEE 4/S5-3 FOR TYPICAL JOIST REINFORCEMENT AT CONCENTRATED LOADS.
- ⊠ INDICATES OPENING IN ROOF DECK, SEE 6/S5-3.
- ⊠ INDICATES 8" THICK CMU WALL REINFORCED W/ #5@32" O.C., SEE DETAIL 4/S4-1.
- ⊠ INDICATES ADDITIONAL CMU WALL REINFORCEMENT, SEE 1/S4-1.
- SEE 2&5/S4-1 FOR STANDARD LINTEL SCHEDULE.
- INDICATES CONT. HORIZ. BRIDGING AT TOP AND BOTTOM CHORD OF JOISTS WITH ADDITIONAL X-TYPE BRIDGING IN THE FIRST PANEL AND EVERY SIXTH PANEL. BRIDGING SHALL BE WELDED TO JOISTS, FRAMING, AND AT CROSSOVER POINTS.
- EXTEND AND ATTACH BOTTOM CHORD OF JOIST AT COLUMN LINE (OR CLOSEST TO COLUMN LINE) TO COLUMN WITH L2x2x3/8", UNLESS NOTED OTHERWISE.
- ⊠ INDICATES AREA OF ROOF DESIGNED FOR 60 PSF LIVE LOAD TO ACCOMMODATE FUTURE ROOFTOP MECHANICAL EQUIPMENT. CONTRACTOR SHALL COORDINATE WEIGHT AND LOCATION OF ALL RTU UNITS WITH MECH PRIOR TO FABRICATION. SEE 9/S5-3 FOR TYPICAL FRAMING UNDER RTU CURB.
- SP INDICATES SPECIAL JOIST, SEE 12/S5-5 FOR SPECIAL JOIST PROFILE.



- W12x19
- HSS4x4x1/4
- HSS12x6x3/8
- W8x10
- W12x26
- W16x26
- W16x31
- W21x44
- 18K4 Steel Joist+ L5x5x3/8
- 16K2 Steel Joist
- Metal Roof Decking
- PL 1/4"x5" Cont.
- 3/16" Bent Plate
- PL 1/4"x4" Cont.
- L2-1/2x2-1/2x1/4 Cont.
- 6x6x1/2" Cap Plate
- L4x3x1/4 Cont.
- 6"x4" Stabilizer Plate

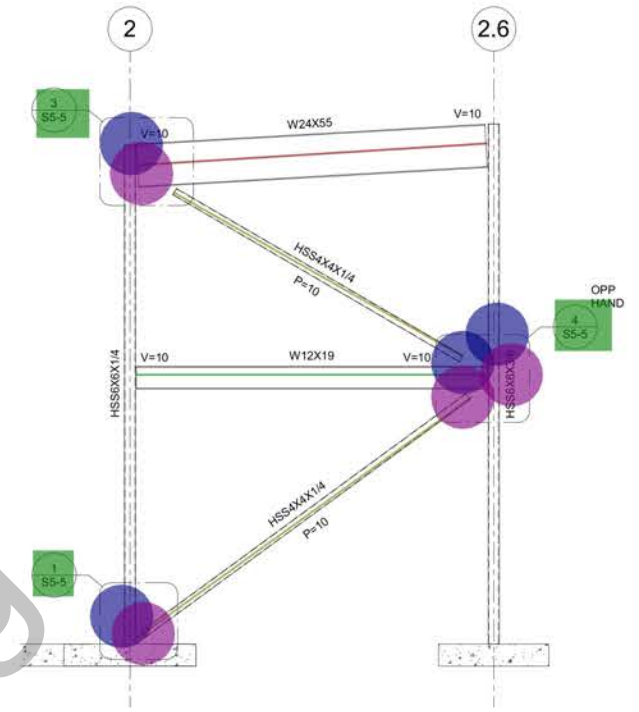
	156.1 FT
	57.5 FT
	22.8 FT
	14.6 FT
	18.8 FT
	30.7 FT
	24.9 FT
	35.1 FT
	498.3 FT
	112.7 FT
	3969.2 SQ FT
	11.9 FT
	202.7 FT
	22.5 FT
	22.7 FT
	2.0 EA
	16.2 FT
	1.0 EA

1 HIGH ROOF FRAMING PLAN
 S1-4
 1/8" = 1'-0"

NOTES:

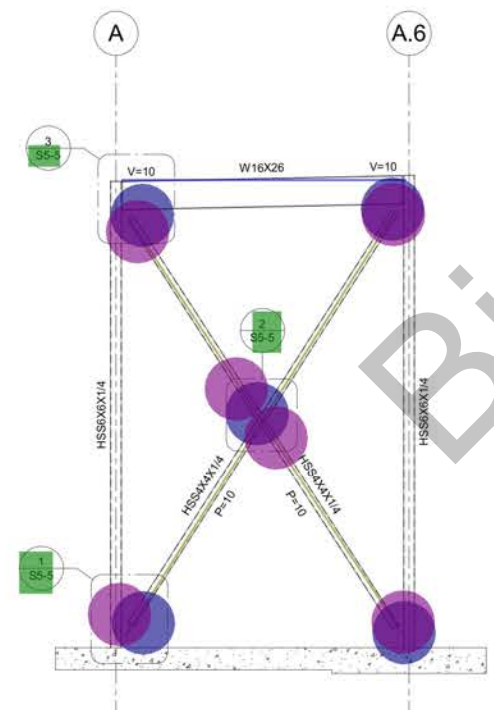
1. SEE S0-1 FOR STRUCTURAL GENERAL NOTES.
2. SEE ARCH FOR ADDITIONAL INFORMATION AND DIMENSIONS.
3. DECK BEARING ELEVATION SHOWN RELATIVE TO FIRST FLOOR REFERENCE ELEVATION = 0'-0", UNO.
4. INDICATES DIRECTIONAL SPAN OF 1 1/2" 20 GA TYPE B GALVANIZED ROOF DECK, SEE 3/S5-3.
5. INDICATES BRACED FRAME, SEE S5-11 AND S5-12.
6. INDICATES MOMENT CONNECTION, SEE 7/S5-1. CONNECTION SHALL DEVELOP FULL CAPACITY OF MEMBER.
7. $V \times X$ INDICATES MAXIMUM UNFACTORED SHEAR REACTION IN KIPS, MINIMUM REACTION IS 10 KIPS, UNO.
8. $D \times X$ INDICATES TOP OF STEEL ELEVATION RELATIVE TO FIRST FLOOR REFERENCE ELEVATION = 0'-0".
9. $P \times X$ INDICATES MAXIMUM UNFACTORED AXIAL FORCE TO BE TRANSFERRED TO BRACE THROUGH A SLIP-CRITICAL CONNECTION.
10. SEE 4/S5-3 FOR TYPICAL JOIST REINFORCEMENT AT CONCENTRATED LOADS.
11. INDICATES OPENING IN ROOF DECK, SEE 6/S5-3.
12. INDICATES 8" CMU WALL REINFORCED W/ #5@32" O.C., SEE DETAIL 4/S4-1.
13. INDICATES ADDITIONAL CMU WALL REINFORCEMENT, SEE 1/S4-1.
14. SEE 2&5/S4-1 FOR STANDARD LINTEL SCHEDULE.
15. INDICATES CONT. HORIZ. BRIDGING AT TOP AND BOTTOM CHORD OF JOISTS WITH ADDITIONAL X-TYPE BRIDGING IN THE FIRST PANEL AND EVERY SIXTH PANEL. BRIDGING SHALL BE WELDED TO JOISTS, FRAMING, AND AT CROSSOVER POINTS.
16. EXTEND AND ATTACH BOTTOM CHORD OF JOIST AT COLUMN LINE (OR CLOSEST TO COLUMN LINE) TO COLUMN WITH L2x2x3/16", UNLESS NOTED OTHERWISE.

	W24x55	15.8 FT	
	W12x19	16.0 FT	
	HSS4x4x1/4	79.4 FT	
	3/8" Min Gusset Plate	14.0 EA	
	4x4x3/16" Cover Plate	10.0 EA	
	W16x26	12.9 FT	
	W16x31	21.4 FT	
	HSS5x5x1/4	54.6 FT	
	5x5x3/16" Cover Plate	6.0 EA	



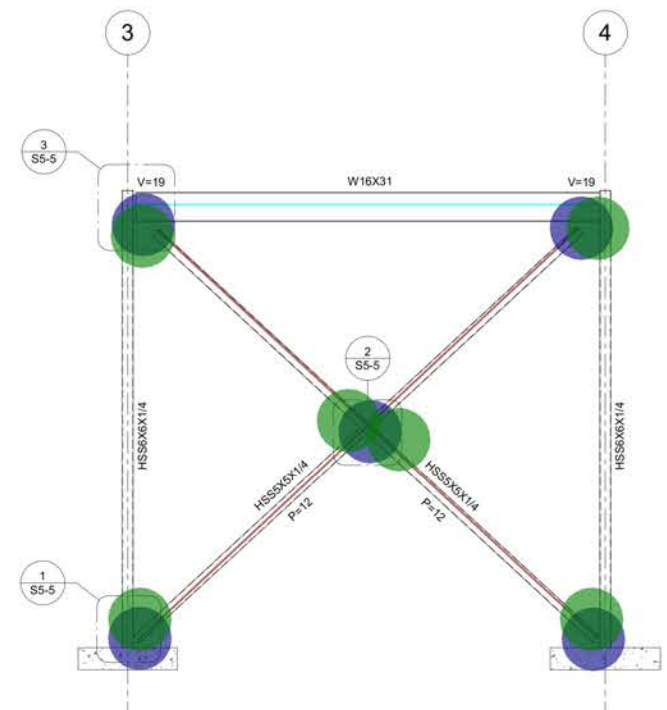
NOTES:
1. SEE 6/SS-5 FOR TYPICAL BRACE FRAME NOTES.

2 BRACED FRAME ALONG GRIDLINE D
SS-11 1/4" = 1'-0"



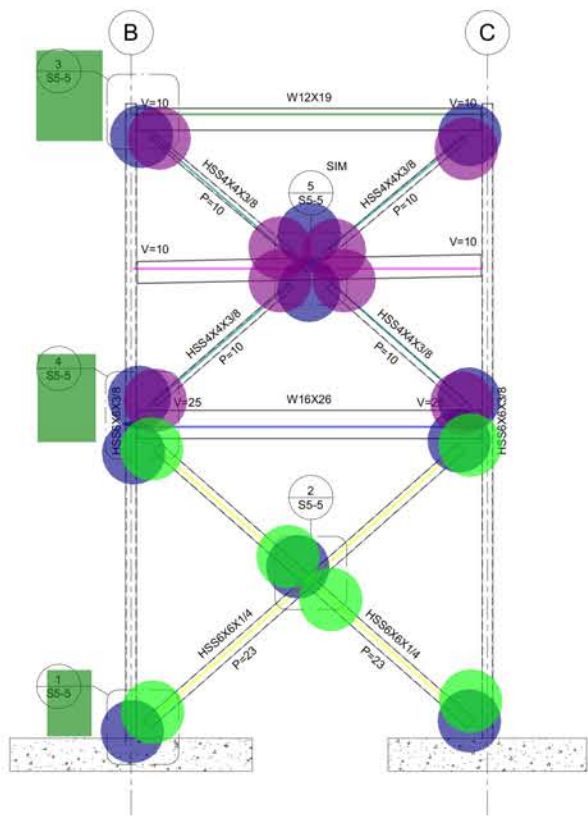
NOTES:
1. SEE 6/SS-5 FOR TYPICAL BRACE FRAME NOTES.

3 BRACED FRAME ALONG GRIDLINE 2
SS-11 1/4" = 1'-0"

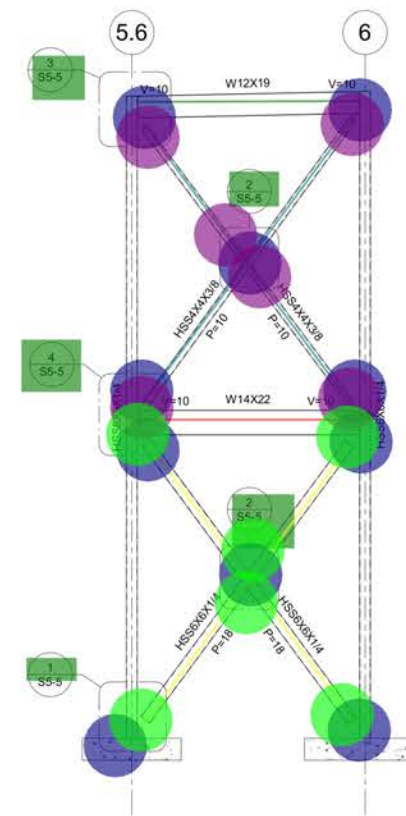


NOTES:
1. SEE 6/SS-5 FOR TYPICAL BRACE FRAME NOTES.

1 BRACED FRAME ALONG GRIDLINE A
SS-11 1/4" = 1'-0"



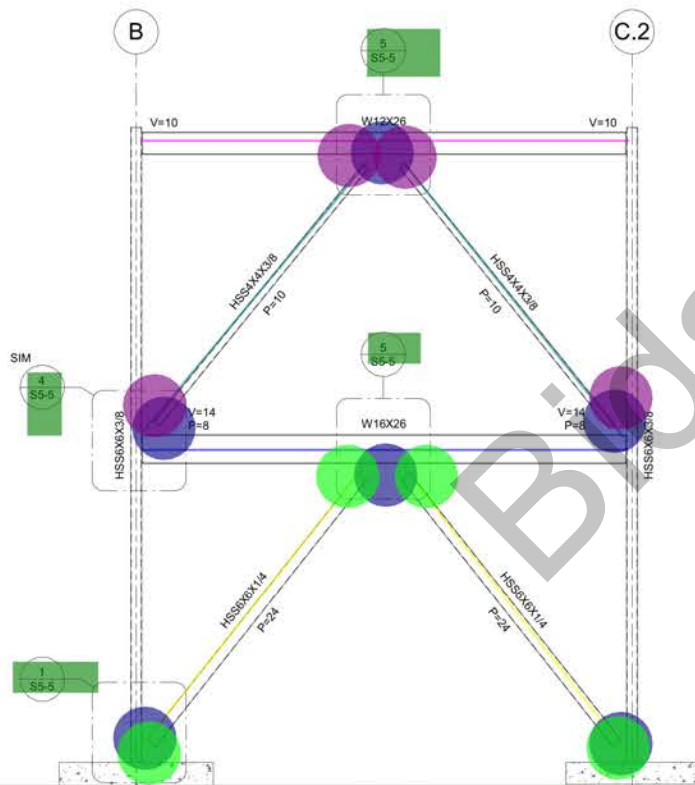
NOTES:
1. SEE 6/SS-5 FOR TYPICAL BRACE FRAME NOTES.



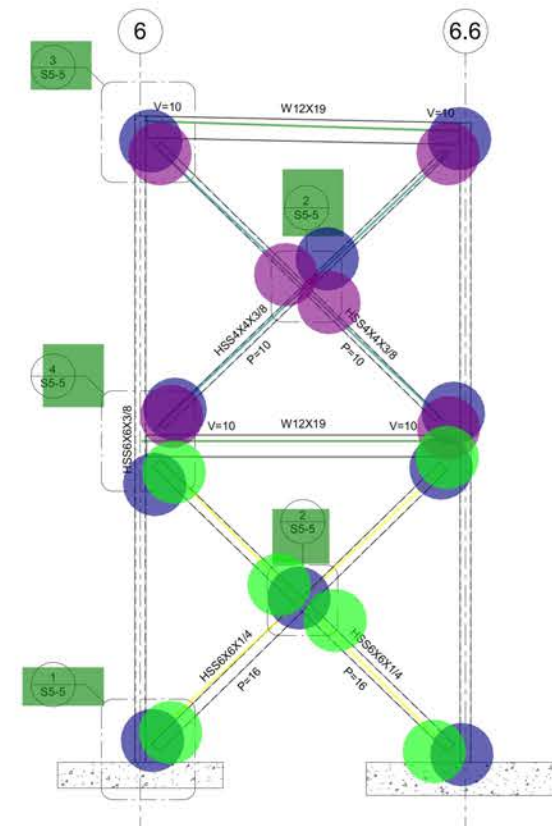
NOTES:
1. SEE 6/SS-5 FOR TYPICAL BRACE FRAME NOTES.

4 BRACED FRAME ALONG GRIDLINE 5
SS-12 1/4" = 1'-0"

2 BRACED FRAME ALONG GRIDLINE F
SS-12 1/4" = 1'-0"



NOTES:
1. SEE 6/SS-5 FOR TYPICAL BRACE FRAME NOTES.



NOTES:
1. SEE 6/SS-5 FOR TYPICAL BRACE FRAME NOTES.

	136.3 FT
	54.8 FT
	10.1 FT
	37.0 EA
	24.0 EA
	22.0 EA
	142.7 FT
	37.8 FT
	38.0 FT

1 BRACED FRAME ALONG GRIDLINE B
SS-12 1/4" = 1'-0"