

BIDS ESTIMATING

Client: (Hidden for Privacy)
 Project Name: (Hidden for Privacy)
 Project ID: (Hidden for Privacy)
 Last Updated: 12/02/2022



Website: bidsestimating.com
 Email: info@bidsestimating.com
 Contact: +1 (832) 346 0507

Quantity Takeoff Sheet

Landscape

ITEM #	REF. SHEET	DETAIL	CSI SECT	Sub Contractor	DESCRIPTION	QTY.	WASTAGE	QTY WITH WASTAGE	UNIT	UNIT LABOR HOURS	TOTAL LABOR HOURS	PER HOUR LABOR RATE	TOTAL LABOR COST	UNIT MATERIAL COST	TOTAL MATERIAL COST	ITEM COST	TRADE COST
			DIV-32		Landscape												\$ 90,837
						Concrete Pavement											
1	L1.1 - L1.3	L1.1 - L1.3	DIV-32	Paving	Conc. Pavement/ Pad Note: Details and Thickness etc. missing. Please Confirm if Existing.	1	5%	1	CY	2,500	2.41	\$ 33.5	\$ 80.8	\$ 140.0	\$ 135.1	\$ 216	
						Driveways and Walk ways											
2	L1.1 - L1.3	L1.1 - L1.3	DIV-32	Landscaper	Brick Drive and Walk Note: Details missing. Please Confirm if Existing.	58	5%	61	CY	2,500	152.11	\$ 33.7	\$ 5,128.1	\$ 140.0	\$ 8,518.2	\$ 13,646	
						Pavers											
3	L1.1 - L1.3	L1.1 - L1.3	DIV-32	Paving	Flagstone-Shaped Pavers Set in Sand w/Mortar Edge	377	5%	396	SF	0.200	79.10	\$ 33.5	\$ 2,649.1	\$ 7.5	\$ 2,966.3	\$ 5,615	
4	L1.1 - L1.3	L1.1 - L1.3	DIV-32	Paving	New Pavers Note: Details missing. Please Confirm if Existing.	102	5%	107	SF	0.250	26.65	\$ 33.5	\$ 892.5	\$ 6.8	\$ 724.9	\$ 1,617	
						Boulders											
5	L1.1 - L1.3	L1.1 - L1.3	DIV-32	erior improve	Boulder "A": 3'x4'x2' (1-1/2 Tons)	1	0%	1	EA	2.800	2.80	\$ 37.2	\$ 104.2	\$ 342.0	\$ 342.0	\$ 446	
6	L1.1 - L1.3	L1.1 - L1.3	DIV-32	erior improve	Boulder "B": 3'x3'x2' (1 Ton)	6	0%	6	EA	2.500	15.00	\$ 37.2	\$ 558.2	\$ 306.0	\$ 1,836.0	\$ 2,394	
7	L1.1 - L1.3	L1.1 - L1.3	DIV-32	erior improve	Boulder "C": 2'x3'x2' (3/4 Ton)	3	0%	3	EA	2.200	6.60	\$ 37.2	\$ 245.6	\$ 234.0	\$ 702.0	\$ 948	
						Misc.											
8	L1.1 - L1.3	L1.1 - L1.3	DIV-32	erior improve	Rip Rap	2,148	5%	2,256	SF	0.174	391.95	\$ 37.2	\$ 14,584.8	\$ 5.0	\$ 11,279.1	\$ 25,864	
9	L1.1 - L1.3	L1.1 - L1.3	DIV-32	erior improve	18" High, 16" Wide CMU Block Bench / Retaining Wall	45	5%	47	SF	0.220	10.35	\$ 37.2	\$ 385.1	\$ 6.0	\$ 282.3	\$ 667	
10	L1.1 - L1.3	L1.1 - L1.3	DIV-32	erior improve	18" High Firepit (72" Diameter)	1	0%	1	EA	4.500	4.50	\$ 37.2	\$ 167.4	\$ 4,508.0	\$ 4,508.0	\$ 4,675	
11	L1.1 - L1.3	L1.1 - L1.3	DIV-32	erior improve	Riser Steps (4'-10" L x 1'-0" W x 6" - 7" High)	2	0%	2	EA	4.500	9.00	\$ 37.2	\$ 334.9	\$ 220.0	\$ 440.0	\$ 775	
12	L1.1 - L1.3	L1.1 - L1.3	DIV-32	erior improve	Flat LedgeStone Seating, Glebwillw Boulder, Approx. 18" High x 24" Wide x 36" Long w/Flat Smooth Top	3	0%	3	EA	2.500	7.50	\$ 37.2	\$ 279.1	\$ 299.5	\$ 898.5	\$ 1,178	
13	L1.1 - L1.3	L1.1 - L1.3	DIV-32	erior improve	Large Flagstone Stepping Pads	45	0%	45	EA	1.200	54.00	\$ 37.2	\$ 2,009.4	\$ 185.0	\$ 8,325.0	\$ 10,334	

BIDS ESTIMATING

Client: (Hidden for Privacy)
 Project Name: (Hidden for Privacy)
 Project ID: (Hidden for Privacy)
 Last Updated: 12/02/2022

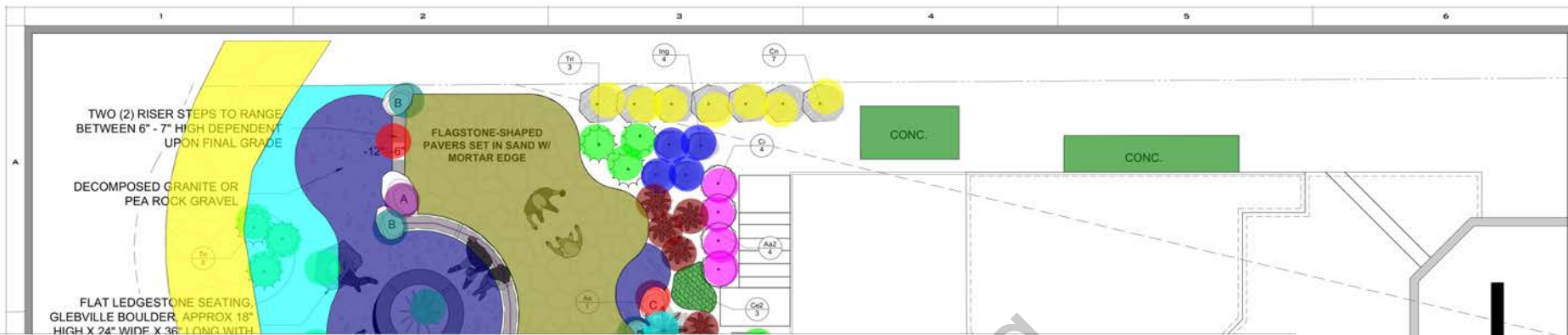


Website: bidsestimating.com
 Email: info@bidsestimating.com
 Contact: +1 (832) 346 0507

Quantity Takeoff Sheet

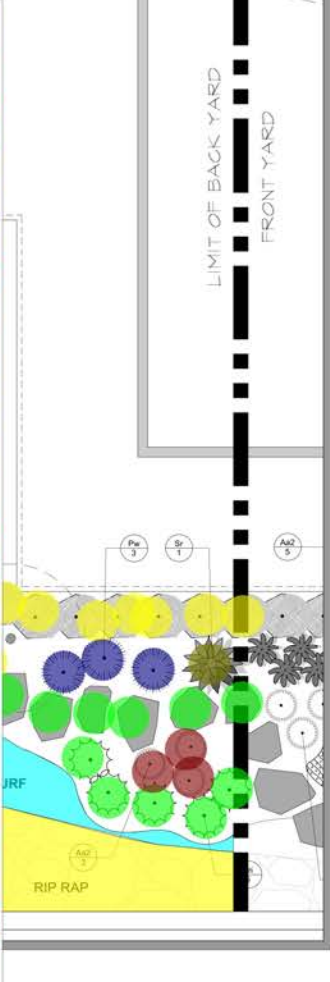
Landscape

ITEM #	REF. SHEET	DETAIL	CSI SECT	Sub Contractor	DESCRIPTION	QTY.	WASTAGE	QTY WITH WASTAGE	UNIT	UNIT LABOR HOURS	TOTAL LABOR HOURS	PER HOUR LABOR RATE	TOTAL LABOR COST	UNIT MATERIAL COST	TOTAL MATERIAL COST	ITEM COST	TRADE COST	
					LANDSCAPING													
14	L1.1 - L1.3	L1.1 - L1.3	DIV-32	Landscaper	Turf Note: Please Confirm if Existing.	1,033	5%	1,085	SF	0.010	10.85	\$ 33.7	\$ 365.7	\$ 2.1	\$ 2,277.8	\$ 2,643		
15	L1.1 - L1.3	L1.1 - L1.3	DIV-32	Landscaper	Tri: Tripsacum dactyloides / Fakahatchee Grass	25	0%	25	EA	0.400	10.00	\$ 33.7	\$ 337.1	\$ 28.0	\$ 700.0	\$ 1,037		
16	L1.1 - L1.3	L1.1 - L1.3	DIV-32	Landscaper	Cn: Clusia Rosea 'Nana' / Dwarf Pitch Apple	84	0%	84	EA	0.450	37.80	\$ 33.7	\$ 1,274.4	\$ 65.0	\$ 5,460.0	\$ 6,734		
17	L1.1 - L1.3	L1.1 - L1.3	DIV-32	Landscaper	Ing: Ixora Coccinea 'Nora Grant' / Red Ixora	24	0%	24	EA	0.350	8.40	\$ 33.7	\$ 283.2	\$ 35.0	\$ 840.0	\$ 1,123		
18	L1.1 - L1.3	L1.1 - L1.3	DIV-32	Landscaper	Ci: Chrysobalanus Icaco 'Red Tip' / Red Tip Cocoplum	4	0%	4	EA	0.380	1.52	\$ 33.7	\$ 51.2	\$ 40.0	\$ 160.0	\$ 211		
19	L1.1 - L1.3	L1.1 - L1.3	DIV-32	Landscaper	Aa: Agave Attenuata / Agave	1	0%	1	EA	0.450	0.45	\$ 33.7	\$ 15.2	\$ 48.0	\$ 48.0	\$ 63		
20	L1.1 - L1.3	L1.1 - L1.3	DIV-32	Landscaper	Aa2: Asparagus Aethiopicus / Foxtail Fern	36	0%	36	EA	0.300	10.80	\$ 33.7	\$ 364.1	\$ 18.0	\$ 648.0	\$ 1,012		
21	L1.1 - L1.3	L1.1 - L1.3	DIV-32	Landscaper	Sr: Strelitzia Reginae / Bird of Paradise	11	0%	11	EA	0.365	4.02	\$ 33.7	\$ 135.5	\$ 25.5	\$ 280.5	\$ 416		
22	L1.1 - L1.3	L1.1 - L1.3	DIV-32	Landscaper	Pw: Pennisetum Setaceum 'White' / White Fountain Grass	19	0%	19	EA	0.350	6.65	\$ 33.7	\$ 224.2	\$ 25.0	\$ 475.0	\$ 699		
23	L1.1 - L1.3	L1.1 - L1.3	DIV-32	Landscaper	Ao: Aechmea Blanchetiana 'Orangeade' / Orangeade Bromeliad	7	0%	7	EA	0.350	2.45	\$ 33.7	\$ 82.6	\$ 30.0	\$ 210.0	\$ 293		
24	L1.1 - L1.3	L1.1 - L1.3	DIV-32	Landscaper	Ca3: Cordyline Fruticosa 'Auntie Lou' / Ti - Auntie Lou	18	0%	18	EA	0.450	8.10	\$ 33.7	\$ 273.1	\$ 70.0	\$ 1,260.0	\$ 1,533		
25	L1.1 - L1.3	L1.1 - L1.3	DIV-32	Landscaper	Cv: Codiaeum Variegatum 'Petra' / Croton Petra	12	0%	12	EA	0.250	3.00	\$ 33.7	\$ 101.1	\$ 15.5	\$ 186.0	\$ 287		
26	L1.1 - L1.3	L1.1 - L1.3	DIV-32	Landscaper	Id: Ilex Vomitoria 'Schillings Dwarf' / Dwarf Schillings Holly	3	0%	3	EA	0.390	1.17	\$ 33.7	\$ 39.4	\$ 35.5	\$ 106.5	\$ 146		
27	L1.1 - L1.3	L1.1 - L1.3	DIV-32	Landscaper	Rh: Rhaps Excelsa / Lady Palm	1	0%	1	EA	2.000	2.00	\$ 33.7	\$ 67.4	\$ 250.0	\$ 250.0	\$ 317		
28	L1.1 - L1.3	L1.1 - L1.3	DIV-32	Landscaper	Sn: Strelitzia Nicolai / Giant Bird of Paradise	1	0%	1	EA	2.000	2.00	\$ 33.7	\$ 67.4	\$ 237.0	\$ 237.0	\$ 304		
29	L1.1 - L1.3	L1.1 - L1.3	DIV-32	Landscaper	Ce2: Carissa Macrocarpa 'Emerald	22	0%	22	EA	0.540	11.88	\$ 33.7	\$ 400.5	\$ 38.0	\$ 836.0	\$ 1,237		
30	L1.1 - L1.3	L1.1 - L1.3	DIV-32	Landscaper	Ae: Arachis Glabrata 'Ecoturf' /	215	5%	226	SF	0.015	3.39	\$ 33.7	\$ 114.3	\$ 2.5	\$ 565.2	\$ 679		
31	L1.1 - L1.3	L1.1 - L1.3	DIV-32	Landscaper	Fm: Ficus Microcarpa 'Green Island' /	218	5%	229	SF	0.025	5.73	\$ 33.7	\$ 193.2	\$ 4.5	\$ 1,031.7	\$ 1,225		
32	L1.1 - L1.3	L1.1 - L1.3	DIV-32	Landscaper	Decomposite Granite or Pea Rock	10	5%	10	CY	2.500	25.07	\$ 33.7	\$ 845.1	\$ 165.0	\$ 1,654.5	\$ 2,500		
SUB TOTAL											Total Lab. Hours =	917	Total Lab	\$ 32,654	Total Mat. Co	\$ 58,183	\$ 90,837	\$ 90,837
MATERIAL TAX												9.5%			\$ 5,527	\$ 5,527	\$ 5,527	
OVERHEAD AND PRO												25%	\$ 8,163		\$ 14,546	\$ 22,709	\$ 22,709	
TOTAL BASE BID													\$ 40,817		\$ 78,257	\$ 119,074	\$ 119,074	

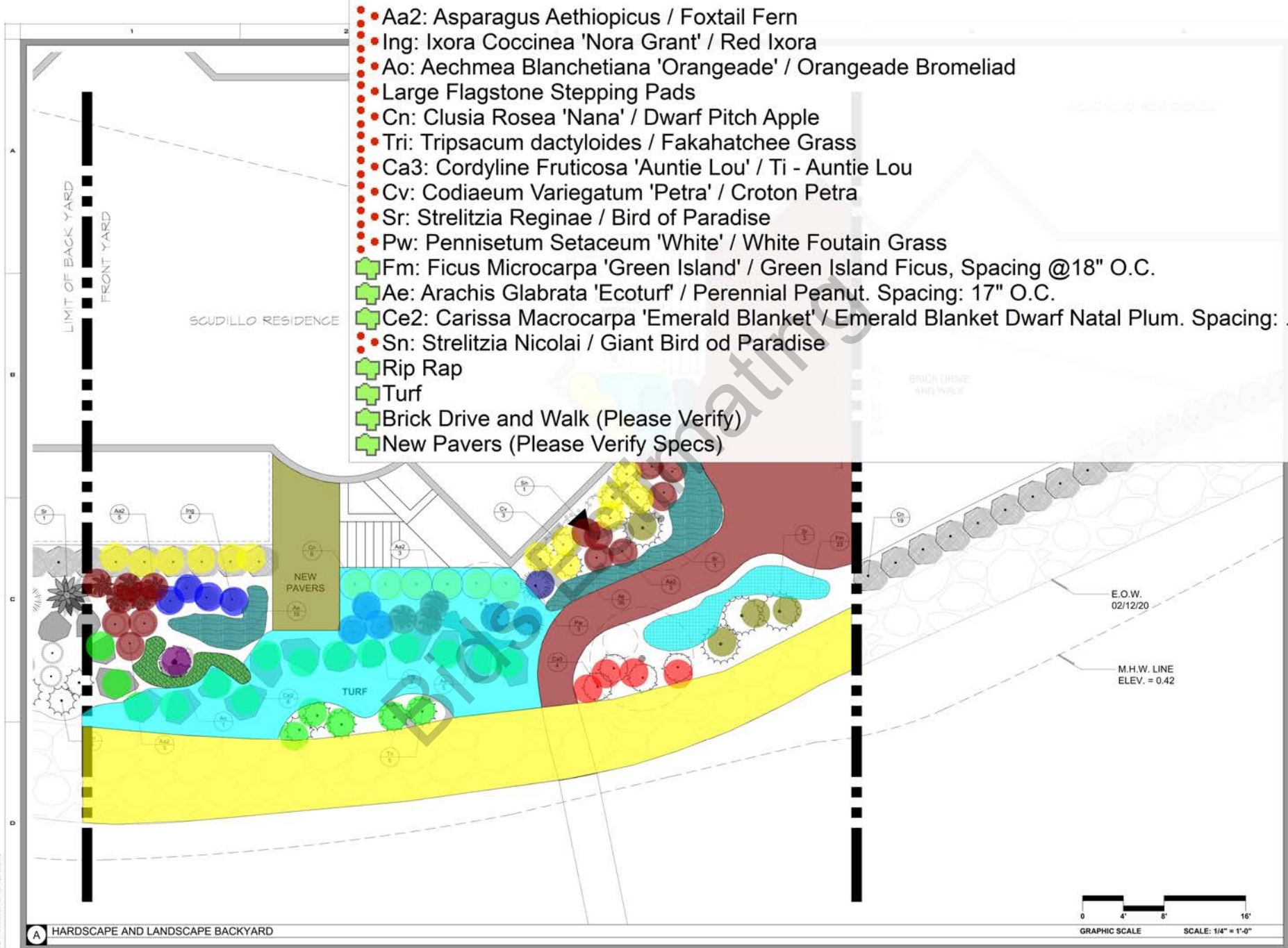


- Boulder "A" 3'x4'x2' (1-1/2 Tons)
- Boulder "B" 3'x3'x2' (1 Ton)
- Boulder "C" 2'x3'x2' (3/4 Ton)
- Tri: Tripsacum dactyloides / Fakahatchee Grass
- Cn: Clusia Rosea 'Nana' / Dwarf Pitch Apple
- Ing: Ixora Coccinea 'Nora Grant' / Red Ixora
- Ci: Chrysobalanus Icaco 'Red Tip' / Red Tip Cocoplum
- Aa: Agave Attenuata / Agave
- Aa2: Asparagus Aethiopicus / Foxtail Fern
- Ce2: Carissa Macrocarpa 'Emerald Blanket' / Emerald Blanket Dwarf Natal Plum. Spacing: 26"...
- Sr: Strelitzia Reginae / Bird of Paradise
- Pw: Pennisetum Setaceum 'White' / White Fountain Grass
- Ao: Aechmea Blanchetiana 'Orangeade' / Orangeade Bromeliad
- Ae: Arachis Glabrata 'Ecoturf' / Perennial Peanut. Spacing: 17" O.C.
- Ca3: Cordyline Fruticosa 'Auntie Lou' / Ti - Auntie Lou
- Large Flagstone Stepping Pads
- Cv: Codiaeum Variegatum 'Petra' / Croton Petra
- Sn: Strelitzia Nicolai / Giant Bird of Paradise
- Flagstone-Shaped Pavers Set in Sand w/Mortar Edge
- Decomposite Granite or Pea Rock Gravel
- 18" High, 16" Wide CMU Block Bench / Retaining Wall
- 18" High Firepit (72" Diameter)
- Riser Steps (4'-10" L x 1'-0" W x 6" - 7" High) - 2 EA
- Flat Ledgestone Seating, Glevillw Boulder, Approx. 18" High x 24" Wide x 36" Long w/Flat Smoot...
- Rip Rap
- Turf
- Conc. Pavement

1.0 EA	6.0 EA
3.0 EA	20.0 EA
27.0 EA	7.0 EA
4.0 EA	1.0 EA
19.0 EA	58.5 SQ FT
4.0 EA	11.0 EA
3.0 EA	67.4 SQ FT
7.0 EA	31.0 EA
5.0 EA	0.0 EA
0.0 EA	376.7 SQ FT
257.9 SQ FT	29.9 FT
1.0 EA	1.0 EA
3.0 EA	1005.9 SQ FT
616.1 SQ FT	75.2 SQ FT



- Aa2: Asparagus Aethiopicus / Foxtail Fern
- Ing: Ixora Coccinea 'Nora Grant' / Red Ixora
- Ao: Aechmea Blanchetiana 'Orangeade' / Orangeade Bromeliad
- Large Flagstone Stepping Pads
- Cn: Clusia Rosea 'Nana' / Dwarf Pitch Apple
- Tri: Tripsacum dactyloides / Fakahatchee Grass
- Ca3: Cordyline Fruticosa 'Auntie Lou' / Ti - Auntie Lou
- Cv: Codiaeum Variegatum 'Petra' / Croton Petra
- Sr: Strelitzia Reginae / Bird of Paradise
- Pw: Pennisetum Setaceum 'White' / White Fountain Grass
- Fm: Ficus Microcarpa 'Green Island' / Green Island Ficus, Spacing @18" O.C.
- Ae: Arachis Glabrata 'Ecoturf' / Perennial Peanut. Spacing: 17" O.C.
- Ce2: Carissa Macrocarpa 'Emerald Blanket' / Emerald Blanket Dwarf Natal Plum. Spacing: ...
- Sn: Strelitzia Nicolai / Giant Bird of Paradise
- Rip Rap
- Turf
- Brick Drive and Walk (Please Verify)
- New Pavers (Please Verify Specs)

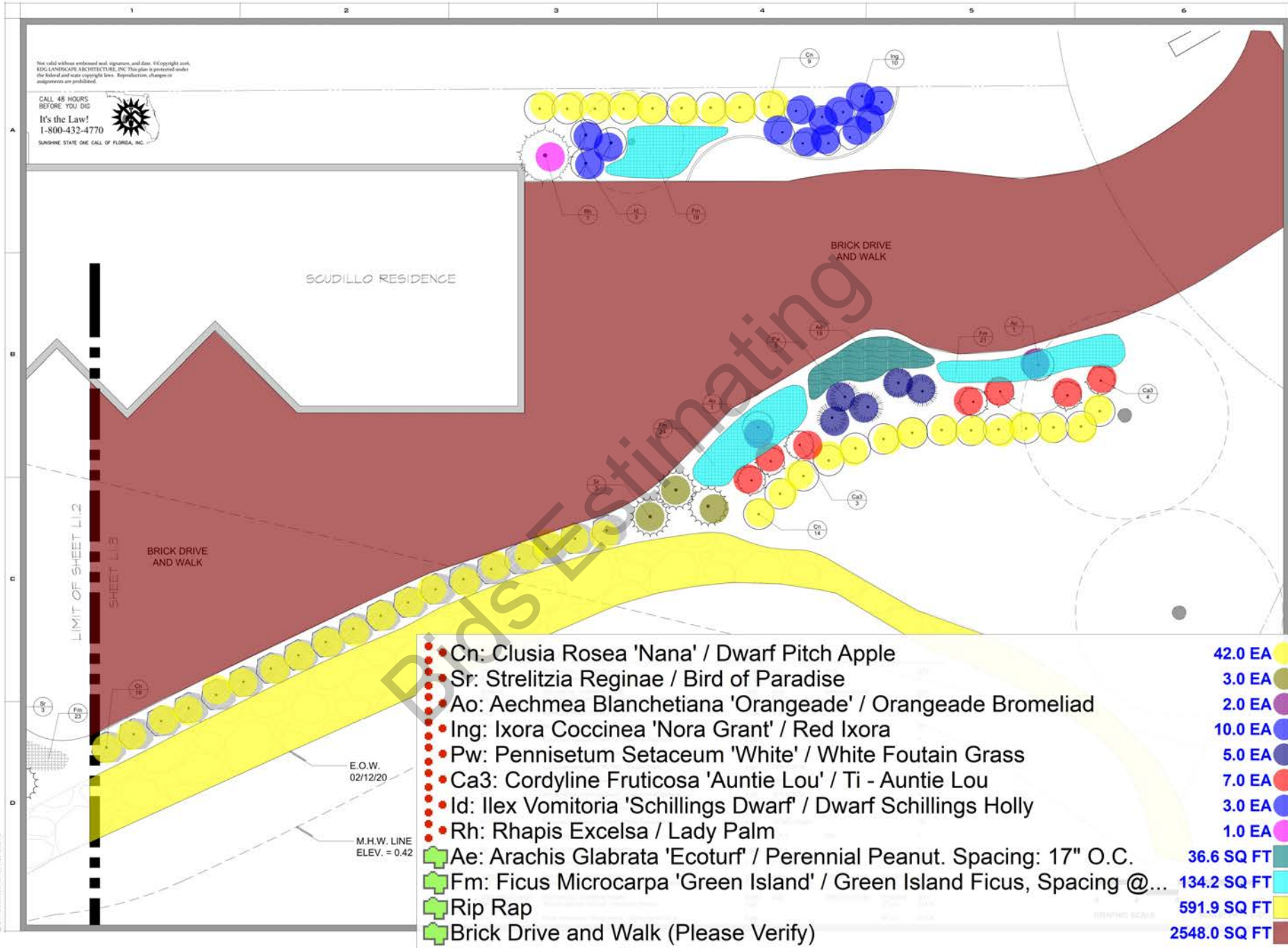


A HARDSCAPE AND LANDSCAPE BACKYARD

© 2017 HILLIARD ARCHITECTURE, INC.

Not valid without embossed seal, signature, and date. © Copyright 2020, KDG LANDSCAPE ARCHITECTURE, INC. This plan is protected under the Federal and state copyright laws. Reproduction, changes or adaptations are prohibited.

CALL 48 HOURS BEFORE YOU DIG
It's the Law!
1-800-432-4770
SUNSHINE STATE ONE CALL OF FLORIDA, INC.



● Cn: Clusia Rosea 'Nana' / Dwarf Pitch Apple	42.0 EA
● Sr: Strelitzia Reginae / Bird of Paradise	3.0 EA
● Ao: Aechmea Blanchetiana 'Orangeade' / Orangeade Bromeliad	2.0 EA
● Ing: Ixora Coccinea 'Nora Grant' / Red Ixora	10.0 EA
● Pw: Pennisetum Setaceum 'White' / White Fountain Grass	5.0 EA
● Ca3: Cordyline Fruticosa 'Auntie Lou' / Ti - Auntie Lou	7.0 EA
● Id: Ilex Vomitoria 'Schillings Dwarf' / Dwarf Schillings Holly	3.0 EA
● Rh: Rhapsis Excelsa / Lady Palm	1.0 EA
■ Ae: Arachis Glabrata 'Ecoturf' / Perennial Peanut. Spacing: 17" O.C.	36.6 SQ FT
■ Fm: Ficus Microcarpa 'Green Island' / Green Island Ficus, Spacing @...	134.2 SQ FT
■ Rip Rap	591.9 SQ FT
■ Brick Drive and Walk (Please Verify)	2548.0 SQ FT