

BIDS ESTIMATING

Client: (Hidden for Privacy)
 Project Name: (Hidden for Privacy)
 Project ID: (Hidden for Privacy)
 Last Updated: 27/08/2021



Website: bidsestimating.com
 Email: info@bidsestimating.com
 Contact: +1 (832) 346 0507

Quantity Takeoff Sheet

Concrete

ITEM #	REF. SHEET	DETAIL	CSI SECT	Sub Contractor	DESCRIPTION	QTY.	WASTAGE	QTY WITH WASTAGE	UNIT	UNIT LABOR HOURS	TOTAL LABOR HOURS	PER HOUR LABOR RATE	TOTAL LABOR COST	UNIT MATERIAL COST	TOTAL MATERIAL COST	ITEM COST	TRADE COST
\$ 161,701																	
			DIV-01		General												
1			General Contractor		Permit Pricing to be updated by GC as per requirement	1	0%	1	LS				\$ -		\$ -	\$ -	
2			General Contractor		Supervision Pricing to be updated by GC as per requirement	1	0%	1	LS				\$ -		\$ -	\$ -	
3			General Contractor		Final Cleanup Pricing to be updated by GC as per requirement	1	0%	1	LS				\$ -		\$ -	\$ -	
4			General Contractor		Mobilization Cost Pricing to be updated by GC as per requirement	1	0%	1	LS				\$ -		\$ -	\$ -	
5			General Contractor		Project Overheads Pricing to be updated by GC as per requirement	1	0%	1	LS				\$ -		\$ -	\$ -	
6			General Contractor		Bonds Pricing to be updated by GC as per requirement	1	0%	1	LS				\$ -		\$ -	\$ -	
7			General Contractor		Fees (Architect & Engineer)	1	0%	1	LS				\$ -		\$ -	\$ -	
8			General Contractor		Temporary Control & Facilities Pricing to be updated by GC as per requirement	1	0%	1	LS				\$ -		\$ -	\$ -	
\$ 161,701																	
					DIV-03 CONCRETE												
					Foundation												
					Wall Footings												
9	S1.1	S2.0	Concrete		2'-0"x2'-0" Wall Footing Reinf. W/ (2) #5 Cont. Top & Bottom	75	5%	78	CY	3.500	273.95	\$ 54.3	\$ 14,878.2	\$ 276.5	\$ 21,638.1	\$ 36,516	
10	S1.1	S2.0	Concrete		2'-0"x1'-0" Wall Footing Reinf. W/ (2) #5 Cont. Top & Bottom	9	5%	10	CY	3.500	34.90	\$ 54.3	\$ 1,895.5	\$ 276.5	\$ 2,756.7	\$ 4,652	
11	S1.1	S2.0	Concrete		2'-2"x2'-0" Wall Footing Reinf. W/ (2) #5 Cont. Top & Bottom	11	5%	11	CY	3.500	39.63	\$ 54.3	\$ 2,152.1	\$ 276.5	\$ 3,129.9	\$ 5,282	
12	S1.1	S2.0	Concrete		2'-2"x1'-4" Wall Footing Reinf. W/ (2) #5 Cont. Top & Bottom	16	5%	17	CY	3.500	60.34	\$ 54.3	\$ 3,277.1	\$ 276.5	\$ 4,766.1	\$ 8,043	
					Thickened Slab Footing												
13	S1.1	S1.1	Concrete		TS3.0: 3'-0"x3'-0"x1'-0" Reinf. (4) - #4 E.W Top & Bot.	5	5%	5	CY	3.000	15.75	\$ 54.3	\$ 855.4	\$ 250.0	\$ 1,312.5	\$ 2,168	
14	S1.1	S1.1	Concrete		TS4.0: 4'-0"x4'-0"x1'-0" Reinf. (6) - #4 E.W Top & Bot.	4	5%	4	CY	3.000	13.07	\$ 54.3	\$ 709.7	\$ 250.0	\$ 1,088.9	\$ 1,799	
					Pad Footing												
15	S1.1	S1.1	Concrete		F3.0: 3'-0"x3'-0"x2'-0" Reinf. W/ (4) - #4 EW Top. & Bot.	3.3	5%	4	CY	3.500	12.25	\$ 54.3	\$ 665.3	\$ 276.5	\$ 967.6	\$ 1,633	
16	S1.1	S1.1	Concrete		F3.0A: 3'-0"x3'-0"x1'-0" Reinf. W/ (4) - #4 EW Top. & Bot.	0.3	5%	0.4	CY	3.500	1.23	\$ 54.3	\$ 66.5	\$ 276.5	\$ 96.8	\$ 163	
					Concrete Pier												

BIDS ESTIMATING

Client: (Hidden for Privacy)
 Project Name: (Hidden for Privacy)
 Project ID: (Hidden for Privacy)
 Last Updated: 27/08/2021



Website: bidsestimating.com
 Email: info@bidsestimating.com
 Contact: +1 (832) 346 0507

Quantity Takeoff Sheet

Concrete

ITEM #	REF. SHEET	DETAIL	CSI SECT	Sub Contract or	DESCRIPTION	QTY.	WASTAGE	QTY WITH WASTAGE	UNIT	UNIT LABOR HOURS	TOTAL LABOR HOURS	PER HOUR LABOR RATE	TOTAL LABOR COST	UNIT MATERIAL COST	TOTAL MATERIAL COST	ITEM COST	TRADE COST
17	S1.1	S1.1	Concrete		P2.6: 2'-6"x2'-6"x1'-8" Reinf. W/ (8) #7 Vert. W/ #3 Ties @ 12" O.C	0.8	5%	0.8	CY	4.000	3.25	\$ 54.3	\$ 176.4	\$ 288.0	\$ 233.8	\$ 410	
					Thickened Slab												
18	S1.1	S2.0	Concrete		Interior Thickened Portion of Slab Reinf. W/ (3) #5 Cont.	28	5%	29.0	CY	3.000	87.06	\$ 54.3	\$ 4,728.0	\$ 190.0	\$ 5,513.6	\$ 10,242	
					Slab												
19	S1.1	S1.1	Concrete		4" Concrete Slab-on-Grade Reinf. W/ One Layer of 6x6-W2.1xW2.1 W.W.F	153	5%	161.1	CY	2.500	402.84	\$ 54.3	\$ 21,878.2	\$ 190.0	\$ 30,615.7	\$ 52,494	
20	S1.1	S2.0	Concrete		2-1/2" Concrete Slab W/ #4 @ 9" O.C EA Way on 1-1/2" 22 GA. Deck	33	5%	34.6	CY	2.500	86.45	\$ 54.3	\$ 4,695.4	\$ 190.0	\$ 6,570.6	\$ 11,266	
21	S1.1	S1.1	Concrete		10 MIL. Vapor Barrier	#####	5%	12,268	SF	0.001	12.27	\$ 54.3	\$ 666.3	\$ 0.1	\$ 1,226.8	\$ 1,893	
22	S1.1	S1.1	Concrete		4" Layer of Granular Fill	#####	5%	12,268	SF	0.015	184.03	\$ 54.3	\$ 9,994.5	\$ 0.9	\$ 11,041.6	\$ 21,036	
23	S1.1	S1.1	Concrete		Saw Cut Control Joint: 1/8" Wide x 1" Deep Saw	1,658	5%	1,741	LF	0.025	43.52	\$ 54.3	\$ 2,363.5	\$ 1.0	\$ 1,740.7	\$ 4,104	
DIV-04 MASONRY																	
					Foundation												
					Wall Footings												
24	S1.1	S2.0	Mason		8"x12" CMU Reinf. W/ #4 @ 24" O.C (Grout Solid)	152.46	5%	160	SF	0.160	25.61	\$ 42.1	\$ 1,078.3	\$ 3.8	\$ 604.5	\$ 1,683	
25	S1.1	S2.0	Mason		8"x8" CMU (Grout Solid)	357.54	5%	375	SF	0.150	56.31	\$ 42.1	\$ 2,370.8	\$ 3.2	\$ 1,210.0	\$ 3,581	
26	S1.1	S2.0	Mason		12"x12" CMU Reinf. W/ #4 @ 48" O.C (Grout Solid)	533.64	5%	560	SF	0.250	140.08	\$ 42.1	\$ 5,897.4	\$ 5.6	\$ 3,137.8	\$ 9,035	
27	S1.1	S2.0	Mason		12"x12" CMU Reinf. W/ #4 @ 24" O.C (Grout Solid)	78.78	5%	83	SF	0.250	20.68	\$ 42.1	\$ 870.6	\$ 6.4	\$ 531.9	\$ 1,403	
DIV-31 EARTH WORKS																	
					Site Excavation & Backfill												
28	n/a	n/a	Earth worker		Excavation	835	5%	877	CY	0.400	350.81	\$ 121.0	\$ 42,447.4	\$ -	\$ -	\$ 42,447	
29	n/a	n/a	Earth worker		Backfill	75	5%	79	CY	0.200	15.75	\$ 121.0	\$ 1,905.8	\$ -	\$ -	\$ 1,906	
					Building Excavation & Backfill												
30	n/a	n/a	Earth worker		Excavation	140	5%	147	CY	0.400	58.80	\$ 121.0	\$ 7,114.8	\$ -	\$ -	\$ 7,115	
31	n/a	n/a	Earth worker		Backfill	40	5%	42	CY	0.200	8.40	\$ 121.0	\$ 1,016.4	\$ -	\$ -	\$ 1,016	
DIV-32 EXTERIOR IMPROVEMENTS																	
					Site Concrete												
					Paving												
32	AS1.0A	AS2.0, AS2.1	Concrete		4" Concrete Pavement -4" Portland Cement Concrete	151	5%	158	CY	3.000	475.06	\$ 54.3	\$ 25,800.5	\$ 212.0	\$ 33,570.9	\$ 59,371	

BIDS ESTIMATING

Client: (Hidden for Privacy)
 Project Name: (Hidden for Privacy)
 Project ID: (Hidden for Privacy)
 Last Updated: 27/08/2021



Website: bidsestimating.com
 Email: info@bidsestimating.com
 Contact: +1 (832) 346 0507

Quantity Takeoff Sheet

Concrete

ITEM #	REF. SHEET	DETAIL	CSI SECT	Sub Contractor	DESCRIPTION	QTY.	WASTAGE	QTY WITH WASTAGE	UNIT	UNIT LABOR HOURS	TOTAL LABOR HOURS	PER HOUR LABOR RATE	TOTAL LABOR COST	UNIT MATERIAL COST	TOTAL MATERIAL COST	ITEM COST	TRADE COST	
33	AS1.0A	AS2.0, AS2.1	Concrete		4" Aggregate Base	#####	5%	12,575	SF	0.010	125.75	\$ 54.3	\$ 6,829.5	\$ 0.9	\$ 11,066.1	\$ 17,896		
34	AS1.0A	AS2.0, AS2.1	Concrete		Control Joint	2,395	5%	2,515	LF	0.022	56.04	\$ 54.3	\$ 3,043.3	\$ 0.5	\$ 1,257.5	\$ 4,301		
35	AS1.0A	AS2.0, AS2.1	Concrete		Expansion Joint	120	5%	126	LF	0.020	2.47	\$ 54.3	\$ 134.3	\$ 0.4	\$ 50.3	\$ 185		
36	AS1.0A	AS2.0, AS2.1	Concrete		6" Concrete Pad Reinf. W/ Steel Mesh	5	5%	5	CY	3.000	16.50	\$ 54.3	\$ 896.0	\$ 276.5	\$ 1,520.3	\$ 2,416		
37	AS1.0A	AS2.0, AS2.1	Concrete		6" Concrete Curb	306	5%	321	LF	0.080	25.67	\$ 54.3	\$ 1,394.3	\$ 14.0	\$ 4,492.8	\$ 5,887		
38	AS1.0A	AS2.0, AS2.1	Concrete		(6"x6"x6'-0") Concrete wheel stopper	2	0%	2	EA	0.281	0.56	\$ 54.3	\$ 30.5	\$ 93.2	\$ 186.5	\$ 217		
39	AS1.0A	AS2.0, AS2.1	Concrete		6" Dia Concrete Filled Pipe Bollard (4' H)	4	0%	4	EA	0.500	2.00	\$ 54.3	\$ 108.6	\$ 355.5	\$ 1,421.8	\$ 1,530		
					Footings													
40	AS1.0A	AS2.1	Concrete		Trash CMU Wall Footing 3'-0"x1'-4" Reinf. W/ (4) #5 Cont. & #5 @ 12" O.C	4	5%	5	CY	3.500	16.28	\$ 54.3	\$ 884.4	\$ 276.5	\$ 1,286.2	\$ 2,171		
41	AS2.1	AS2.1	Concrete		Monument Sign Cont. Footing 3'-0"x1'-4" Reinf. W/ (4) #5 Cont. & #5 @ 12" O.C	2	5%	2	CY	3.500	6.06	\$ 54.3	\$ 329.0	\$ 276.5	\$ 478.4	\$ 807		
42	AS1.0A	AS2.1	Concrete		12" Dia Sonotube Filled W/ Concrete (104 EA, 3'	11	5%	11	CY	3.000	33.34	\$ 54.3	\$ 1,810.5	\$ 288.0	\$ 3,200.3	\$ 5,011		
43	AS1.0A	AS2.1	Concrete		1-6" Dia Footing of Bollard (46 EA, 5'-0" H)	17	5%	18	CY	3.000	53.92	\$ 54.3	\$ 2,928.6	\$ 288.0	\$ 5,176.7	\$ 8,105		
44	AS2.1	AS2.1	Concrete		2'-0" Dia Footing of Bollard (4 EA, 4'-6" H)	2	5%	2	CY	3.000	6.59	\$ 54.3	\$ 358.1	\$ 288.0	\$ 633.0	\$ 991		
45	AS1.0A	AS2.1	Concrete		2'-0" Dia Footing of Light Pole (4 EA, 5'-6" H) Note: Footing Detail Assumed	3	5%	3	CY	3.000	8.06	\$ 54.3	\$ 437.7	\$ 288.0	\$ 773.7	\$ 1,211		
46	AS1.0A	AS2.1	Concrete		2'-0" Dia Footing of Flag Pole (1 EA, 5'-6" H) Note: Footing Detail Assumed	0.6	5%	0.7	CY	3.000	2.01	\$ 54.3	\$ 109.4	\$ 288.0	\$ 193.4	\$ 303		
SUB TOTAL											Total Labor Hrs.	2,777	Total Lab. C	\$ 176,798.12	Total Mat. C	\$ 163,491.35	\$ 340,289.47	\$ 340,289.47
MATERIAL TAX													7.8%			\$ 12,752	\$ 12,752	\$ 12,752
OVERHEAD AND I													25%			\$ 44,200	\$ 40,873	\$ 85,072
TOTAL BASE BID																\$ 220,998	\$ 217,117	\$ 438,114

GENERAL SITE NOTES

- CONTRACTOR SHALL OBTAIN ALL NECESSARY PERMITS PRIOR TO COMMENCEMENT OF CONSTRUCTION.
- CONTRACTOR SHALL BE RESPONSIBLE FOR PROVIDING SAFE AND ADEQUATE WORKING CONDITIONS THROUGHOUT THE DURATION OF THE PROPOSED SITE IMPROVEMENTS.
- CONTRACTOR SHALL BE RESPONSIBLE FOR OBTAINING ALL NECESSARY PERMITS, EASEMENTS AND DIMENSIONS PRIOR TO COMMENCEMENT OF CONSTRUCTION.
- ALL CONSTRUCTION MATERIALS AND WORKMANSHIP SHALL BE IN ACCORDANCE WITH THE LATEST STATE AND LOCAL GOVERNMENT CONSTRUCTION STANDARDS AND SPECIFICATIONS.
- ALL HANDICAP ACCESSIBLE SITE IMPROVEMENTS SHALL BE CONSTRUCTED IN ACCORDANCE WITH ALL FEDERAL, STATE AND LOCAL CODES AND REQUIREMENTS.
- IF DURING THE COURSE OF CONSTRUCTION THE CONTRACTOR FINDS ANY DISCREPANCIES OR CONFLICTS BETWEEN THE PROPOSED SITE IMPROVEMENTS INDICATED ON THE PLANS AND THE PHYSICAL CONDITIONS OF THE SITE, OR ANY ERRORS OR OMISSIONS WITHIN THE PLANS OR IN THE SITE LAYOUT AS PROVIDED BY THE ENGINEER, IT SHALL BE THE RESPONSIBILITY OF THE CONTRACTOR TO IMMEDIATELY NOTIFY THE ENGINEER, UNTIL AUTHORIZED TO PROCEED, ANY WORK PERFORMED BY THE CONTRACTOR AFTER SUCH A DISCOVERY WILL BE AT THE CONTRACTOR'S SOLE RISK AND EXPENSE.
- CONTRACTOR SHALL COORDINATE ALL SITE IMPROVEMENTS WITH ARCHITECTURAL PLANS. ARCHITECTURAL PLANS SHALL BE USED FOR BUILDING STAKEOUT.
- CONTRACTOR SHALL COORDINATE ALL LANDSCAPE IMPROVEMENTS, INCLUDING NEW PLANTINGS AND TURF AREA RESTORATION REQUIREMENTS, WITH THE LANDSCAPE PLANS. CONTRACTOR TO ENSURE NO PLANTINGS ARE IN PLAY AREAS OR FENCED-IN AREAS.
- CONSTRUCTION SURVEY AND STAKEOUT SHALL BE THE RESPONSIBILITY OF THE CONTRACTOR. ALL DIMENSIONS SHOWN ARE MEASURED FROM FACE OF CURB TO FACE OF CURB, OR EDGE OF PAVEMENT TO EDGE OF PAVEMENT UNLESS OTHERWISE NOTED.
- ALL CURB RADI ARE MEASURED AT THE FACE OF CURB UNLESS OTHERWISE NOTED.
- ALL NEW ASPHALT AND/OR CONCRETE PAVING SHALL MATCH EXISTING PAVEMENT FLUSH.
- CONTRACTOR SHALL RESTORE ALL DISTURBED AREAS OUTSIDE OF CONSTRUCTION LIMITS TO ORIGINAL CONDITION OR BETTER.
- CONTRACTOR SHALL REPAIR AT HIS EXPENSE ANY DAMAGE TO EXISTING ASPHALT, CONCRETE, CURBS, SIDEWALKS, ETC. RESULTING FROM CONSTRUCTION TRAFFIC AND/OR OPERATIONS. REPAIRS SHALL BE MADE TO THE SATISFACTION OF THE OWNER AND/OR ENGINEER.
- ALL FIRE ACCESS LANES WITHIN THE PROJECT AREA SHALL REMAIN IN SERVICE, CLEAN OF DEBRIS, AND ACCESSIBLE FOR USE BY EMERGENCY VEHICLES.
- ALL DETECTABLE WARNING PLATES SHALL BE PERFORMED PLASTIC INSERTS UNLESS OTHERWISE NOTED.
- PLAYGROUND EQUIPMENT SHALL BE CONSTRUCTED AND INSTALLED PER THE PUBLIC PLAYGROUND SAFETY HANDBOOK BY THE CONSUMER PRODUCT AND SAFETY COMMISSION AND ASTM F2373-11 AND ASTM F1487-11, PLAYGROUND FENCE TO BE CONSTRUCTED AND INSTALLED PER ASTM F2048-11.
- GC SHALL REVIEW PLAYGROUND LAYOUT AND COORDINATE PLAYGROUND EQUIPMENT LOCATION WITH EQUIPMENT VENDOR PRIOR TO INSTALLATION.
- SIDEWALK SHALL CONFORM TO ACCESSIBILITY CODES A117.1 AND 1108.2
- ENTRAPMENT: THE DISTANCE BETWEEN ANY OPPOSING SURFACES OR OBJECTS SHALL NOT BE GREATER THAN 3 1/2" AND LESS THAN 9".

LEGEND

- PROPOSED 4" ORNAMENTAL ALUMINUM FENCE - BLACK
- PROPOSED 6" SEMI PRIVATE VINYL FENCE - WHITE
- PROPOSED 6" VINYL COATED CHAIN LINK FENCE - WHITE
- PROPOSED 4" VINYL COATED CHAIN LINK FENCE - WHITE
- PROPERTY LINE

PAVEMENT LEGEND

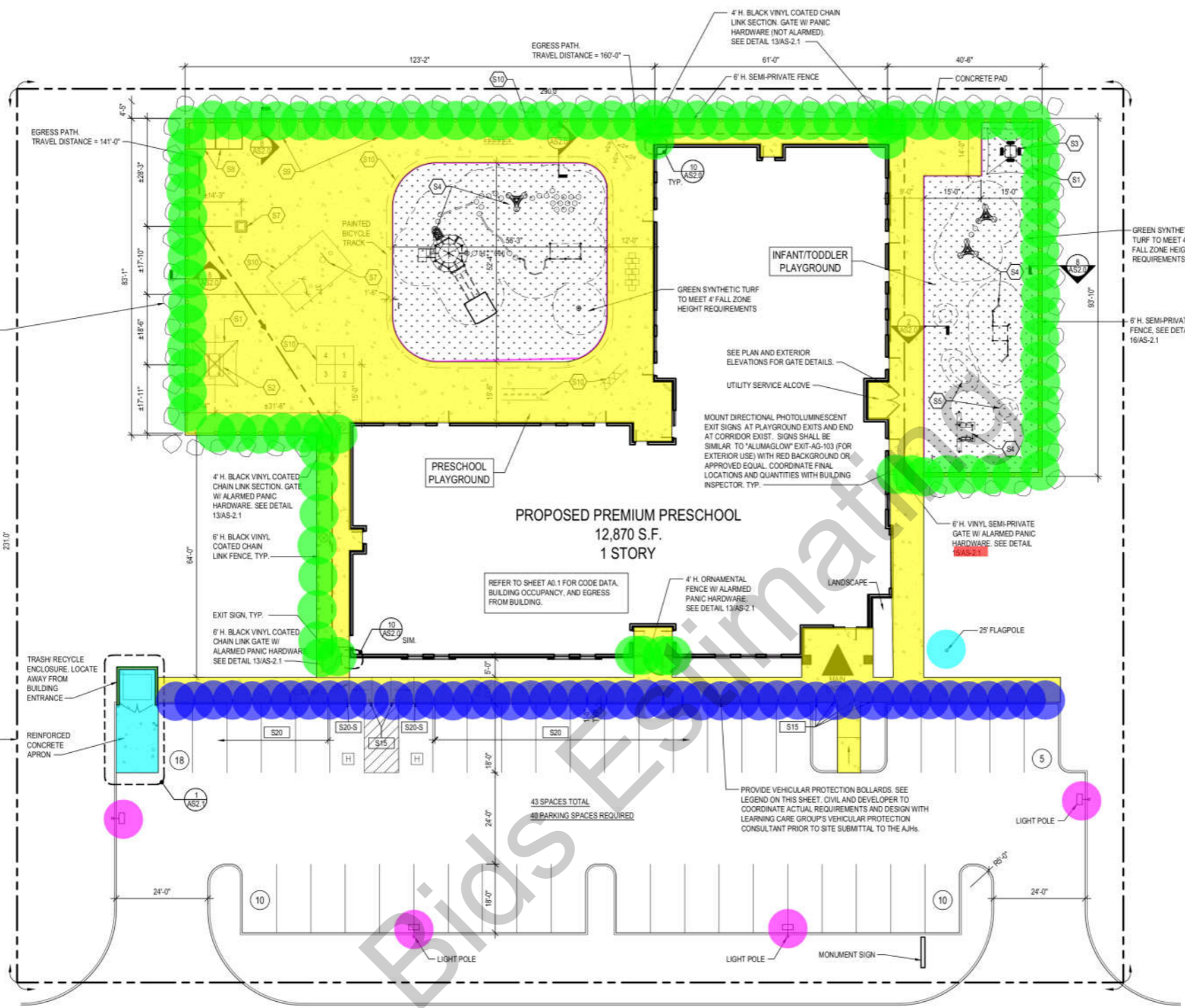
- PROPOSED CONCRETE PAD
4" PORTLAND CEMENT CONCRETE
4" AGGREGATE BASE
- PROPOSED GREEN SYNTHETIC TURF WITH CUSHION
SEE DETAILS ON AS2.0 AND SPECIFICATIONS.

PLAYGROUND KEY NOTES

- S1 12"x12" SHADE PYRAMID - COLOR(S)
- S2 PRESCHOOL PICNIC TABLE
- S3 TODDLER TABLE
- S4 PLAYGROUND EQUIPMENT, TYP.
- S5 PLAYGROUND MOUNDS - SEE DETAIL ON SHEET AS2.0
- S6 NOT USED
- S7 BASKETBALL HOOP - SEE DETAIL 7/AS-2.0. COORDINATE WITH TENANT VENDOR
- S8 STORAGE SHED (BY TENANT) TYP. OF 2
- S9 2'x4' PLANTER BOXES WITH 3'x5' WALK CLEARANCES BY TENANT
- S10 PLAYGROUND GAME STRIPING BY G.C.

SITE NOTES

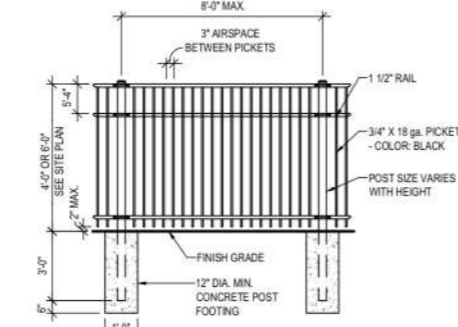
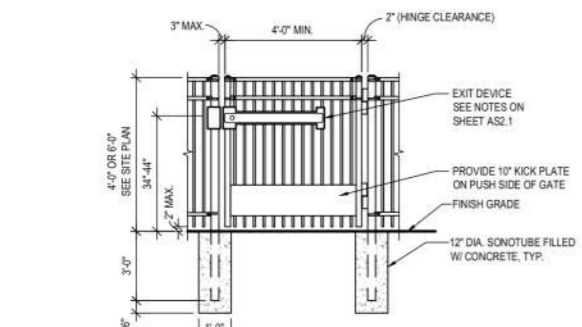
- COORDINATE PLAYGROUND EQUIPMENT W/ VENDOR DRAWINGS FOR PLAYGROUND EQUIPMENT DETAILS, AND DESIGN LAYOUT REQUIRED FOR INSTALLATION OF ALL PLAYGROUND EQUIPMENT. G.C. TO OBTAIN PLAYGROUND EQUIPMENT DRAWINGS FROM VENDOR PRIOR TO START OF CONSTRUCTION.
- ALL FINISHES SHALL BE TO THE FINISH UNLESS OTHERWISE NOTED.
- PROVIDE ACCESSIBLE WALKWAYS TO ALL PLAYGROUND EQUIPMENT.
- PROVIDE A 6" DIA. ALUMINUM BALL AND COLLAR TO THE POLE FOR GROUND SLEEVE ASSEMBLY. PROVIDE COORDINATE LOCATION AND LIGHT FIXTURE NETWORKS.
- ANY SURFACE LIGHTS SHALL BE COORDINATED WITH THE TENANT VENDOR.
- STORM WATER DEVICES, METERS, SHALL BE INSTALLED OUTSIDE OF PLAYGROUND.
- TRASH ENCLOSURES, PARKING LOTS OR ROADWAYS BOLLARDS, BOLLARDS OR WALLS AS REQUIRED.



BOULDER TYPE AND STYLE TO BE INDIGENOUS TO THE AREA, WHERE POSSIBLE. TYPICAL BOULDER SHALL BE 36" ABOVE GRADE WITH A FLAT FACE TOWARDS VEHICLE TO AVOID CREATING A RAMP CONDITION. CIVIL AND DEVELOPER SHALL COORDINATE ACTUAL REQUIREMENTS AND DESIGN WITH LEARNING CARE GROUP'S VEHICULAR PROTECTION CONSULTANT PRIOR TO SITE SUBMITTAL TO THE A.J.H.S. TYPICAL.

TRASH RECYCLE ENCLOSURE. LOCATE AWAY FROM BUILDING ENTRANCE.

PRIMARY STREET



- 4" Concrete Pavement
- 6" Concrete Curb
- 6" Concrete Pad Reinf. W/ Steel Mesh
- Trash CMU Wall Footing 3'-0"x1'-4" Reinf. W/ (4) #5 Cont. & #5 @ 12" O.C
- 12" Dia Sonotube Filled W/ Concrete (3'-6" H)
- 1-6" Dia Footing of Bollard (5'-0" H)
- 2'-0" Dia Footing of Light Pole (5'-6" H)
- 2'-0" Dia Footing of Flag Pole (5'-6" H)



1 ORNAMENTAL FENCE GATE SCALE: N.T.S.

2 ORNAMENTAL FENCE SCALE: N.T.S.

1 SITE PLAN SCALE: 1/16\"/>



FOUR SQUARE

Dimensions: 9'-10" x 9'-10" (3m x 3m)



edumarkingusa.com



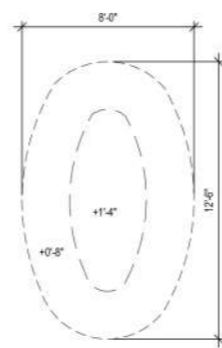
HOPSCOTCH

Dimensions: 9'-2" x 2'-7" (2.8m x 0.8m)

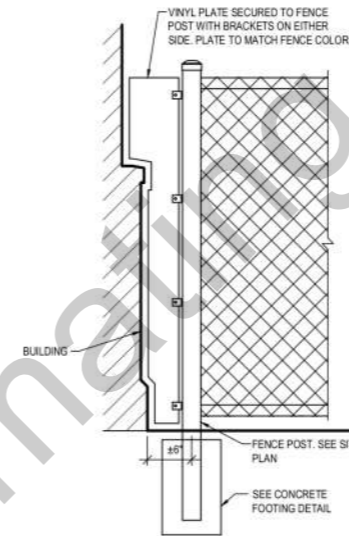


8 PIECE ACTIVITY TRACK - SET-UP ON SIDE WALK (Eliminate Words)

Dimensions: Varies



NOTE: MOUNDS SHALL NOT BE LOCATED WITHIN PLAYGROUND EQUIPMENT FALL ZONES. COORDINATE WITH PLAYGROUND EQUIPMENT VENDOR DRAWINGS PRIOR TO INSTALLATION.



10 FENCE POST FILLER PLATE

SCALE: 1"=1'-0"

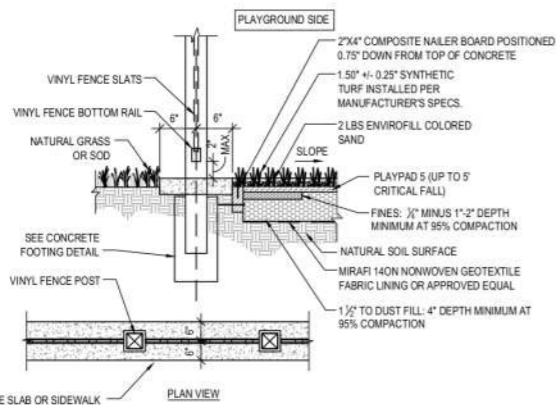


9 PLAYGROUND GAMES - PAINTING

SCALE: NTS

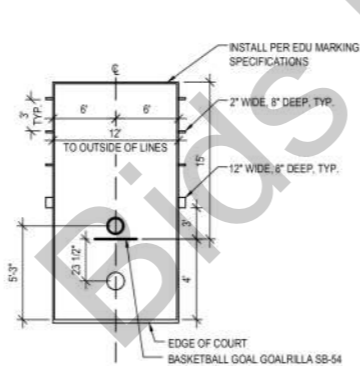
11 TURF MOUNT DIMENSIONS

SCALE: N.T.S.



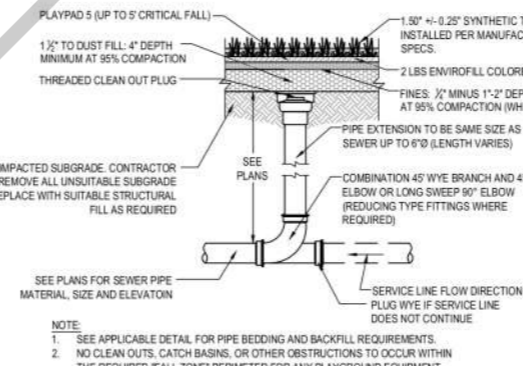
8 TRANSITION TYPE 'D' - PERIMETER

SCALE: NTS



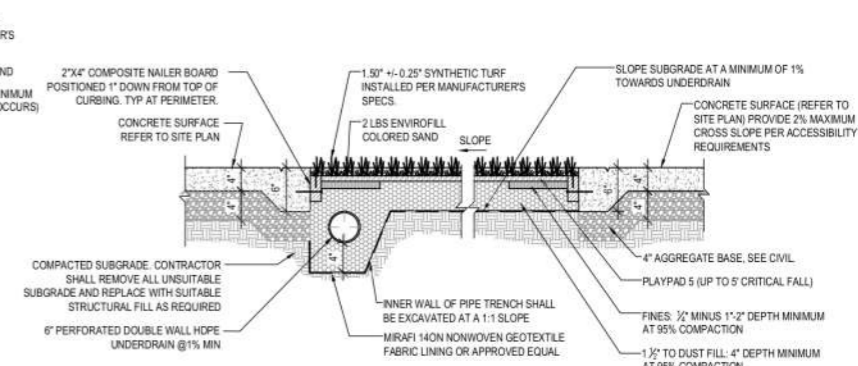
7 BASKETBALL COURT DETAIL

SCALE: NTS



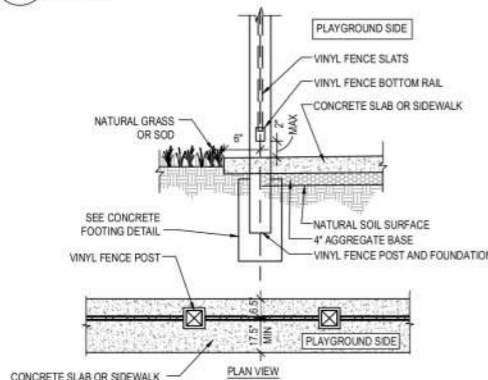
6 UNDERDRAIN CLEANOUT DETAIL

SCALE: NTS



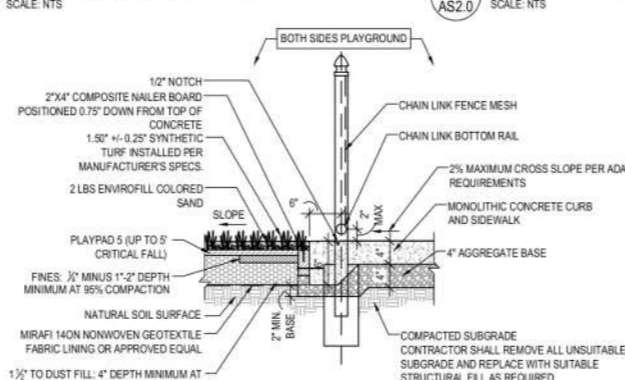
5 TURF PERFORATED UNDERDRAIN DETAIL

SCALE: NTS



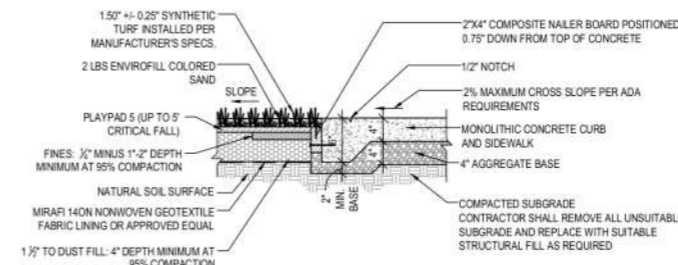
4 TRANSITION TYPE 'C' - PERIMETER

SCALE: NTS



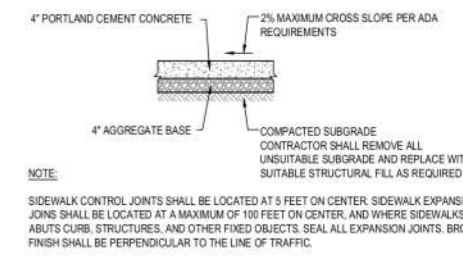
3 TRANSITION TYPE 'B'

SCALE: NTS



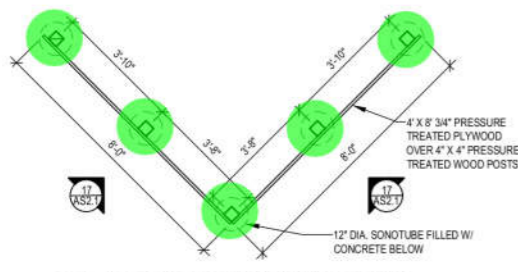
2 TRANSITION TYPE 'A'

SCALE: NTS

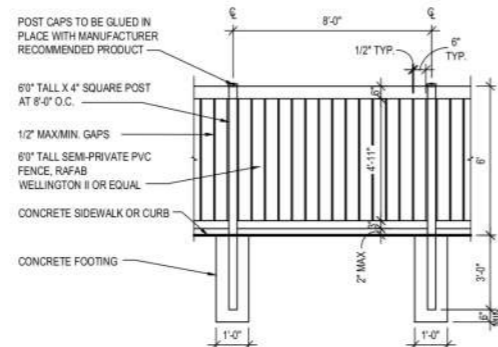


1 CONCRETE SIDEWALK DETAIL

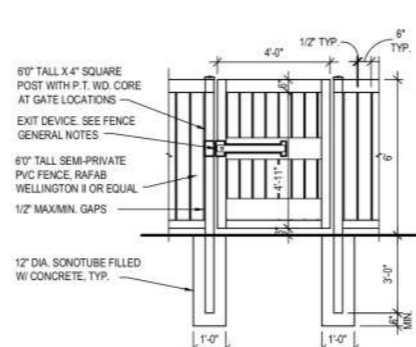
SCALE: NTS



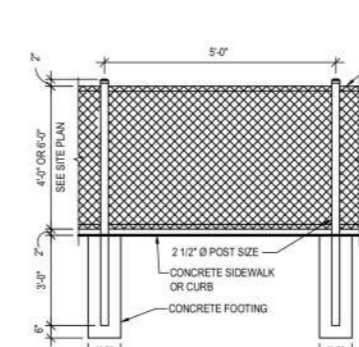
18 "COMING SOON" SIGNAGE PLAN
SCALE: 3/8" = 1'-0"



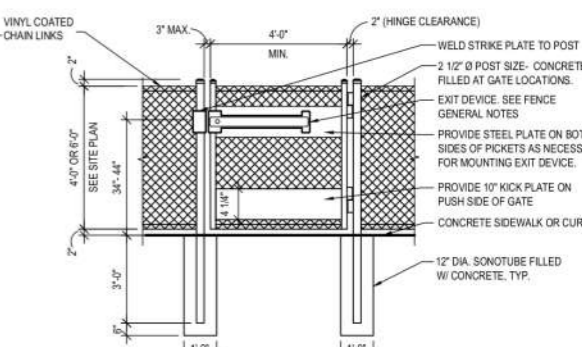
16 SEMI-PRIVATE PVC FENCE
SCALE: NTS



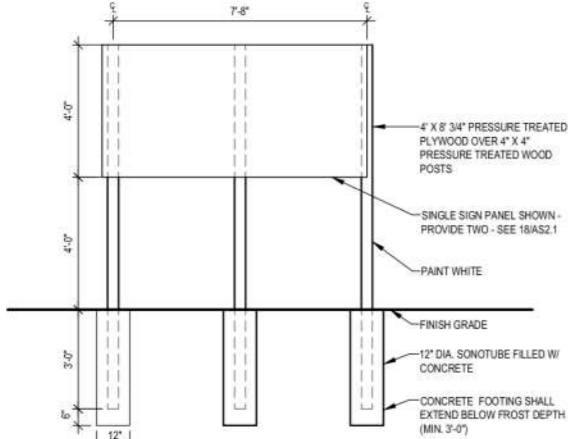
15 PVC FENCE GATE
SCALE: NTS



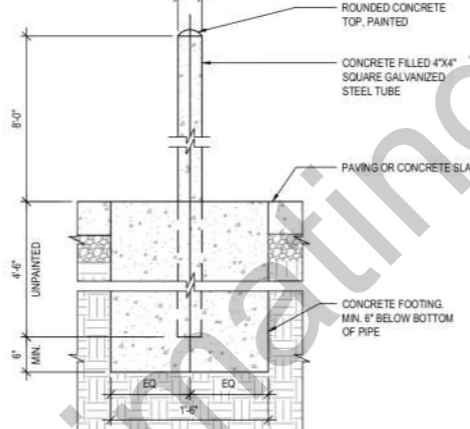
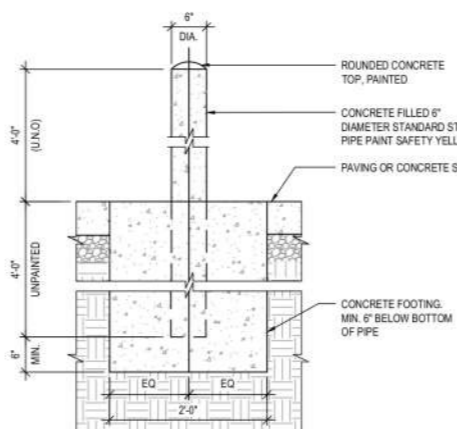
14 CHAIN LINK FENCE
SCALE: NTS



13 CHAIN LINK FENCE GATE
SCALE: NTS



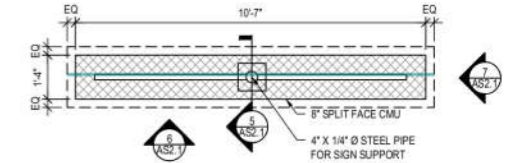
17 "COMING SOON" SIGNAGE ELEVATION
SCALE: 3/8" = 1'-0"



9 GATE POST
SCALE: 1" = 1'-0"

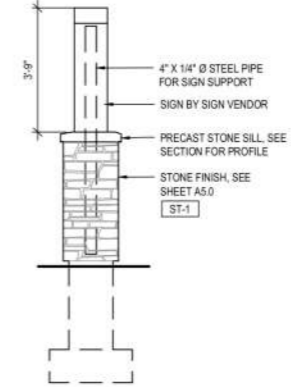
- FENCE GENERAL NOTES**
1. MAINTAIN A MAXIMUM 2" GAP ALONG THE BOTTOM OF RAIL OF ANY PERIMETER FENCE, UNLESS THERE ARE ADDITIONAL REQUIREMENTS BY THE STATE LICENSING REGULATIONS.
 2. THERE SHALL BE NO OPEN SPACES MEASURING BETWEEN 3-1/2" - 9" BETWEEN ANY RAILING COMPONENTS, OR BETWEEN RAILING SYSTEM AND EXISTING FLOOR OR WALLS.
 3. WEATHERIZED EXIT DEVICE (ALARMED): ADVANTEX V40W-(hand)-360-EBW-(size)-SN1-GTPLKIT with (1) SCHLAGE CYLINDER 20-001.
 4. WEATHERIZED EXIT DEVICE (NOT ALARMED): ADVANTEX V40W-(hand)-360-(size)-SN1-GTPLKIT with (1) SCHLAGE CYLINDER 20-001.
 5. PROVIDE TYPICAL CLAW FOOT GATE LATCH AT INTERIOR PROPERTY GATES.
 6. GC SHALL ENSURE THAT GATE POSTS REMAIN ALIGNED AFTER GATE OPERATION. POST CORE AND FULL FOUNDATIONS SHALL BE PROVIDED PER PLANS.

- GENERAL NOTES**
1. CONTRACTOR SHALL VERIFY SIZE OF DUMPSTER WITH LOCAL WASTE HAULER, NOTIFY ARCHITECT AND CIVIL AND ADJUST ENCLOSURE SIZE AS REQUIRED.
 2. REFER TO CIVIL DRAWINGS FOR LOCATION OF MONUMENT SIGN & DUMPSTER ENCLOSURE.
 3. COORDINATE MONUMENT SIGN SIZE AND OVERALL DESIGN WITH SIGN MANUFACTURER PRIOR TO MASONRY BASE CONSTRUCTION.
 4. SEE EXTERIOR ELEVATIONS FOR EXTERIOR FINISH SCHEDULE.
 5. SPLIT FACE BLOCK (STANDARD COLOR) SHALL MATCH EFS-1 COLOR AS CLOSE AS POSSIBLE. SUBMIT SAMPLES TO ARCHITECT FOR COLOR APPROVAL.

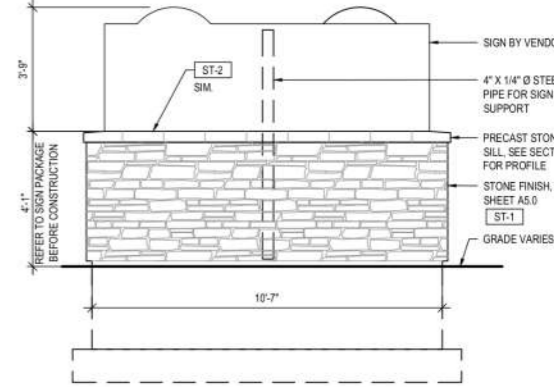


10 MONUMENT SIGN PLAN
SCALE: 3/8" = 1'-0"

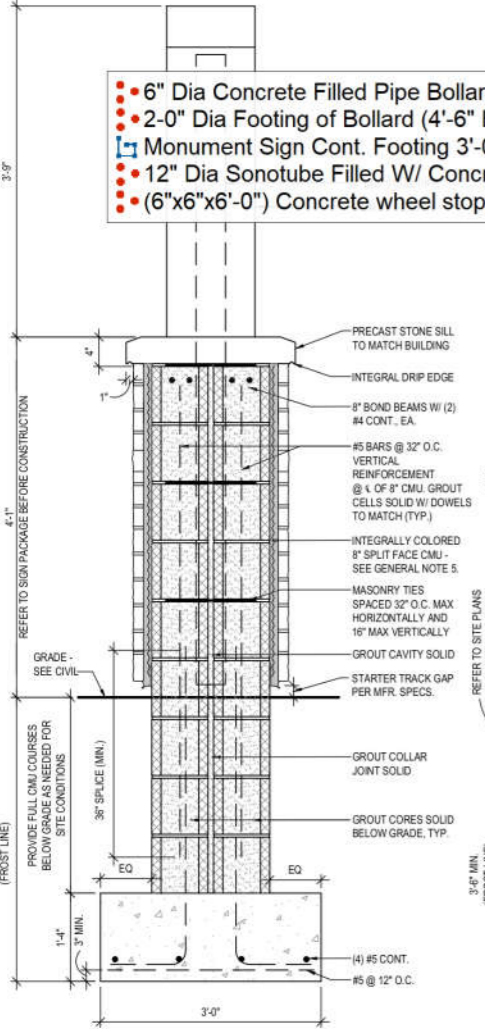
- 6" Dia Concrete Filled Pipe Bollard (4' H)
- 2-0" Dia Footing of Bollard (4'-6" H)
- Monument Sign Cont. Footing 3'-0"x1'-4" Reinf. W/ (4) #5 Cont. & #5 @ 12" O.C
- 12" Dia Sonotube Filled W/ Concrete (3'-6" H)
- (6"x6"x6'-0") Concrete wheel stopper



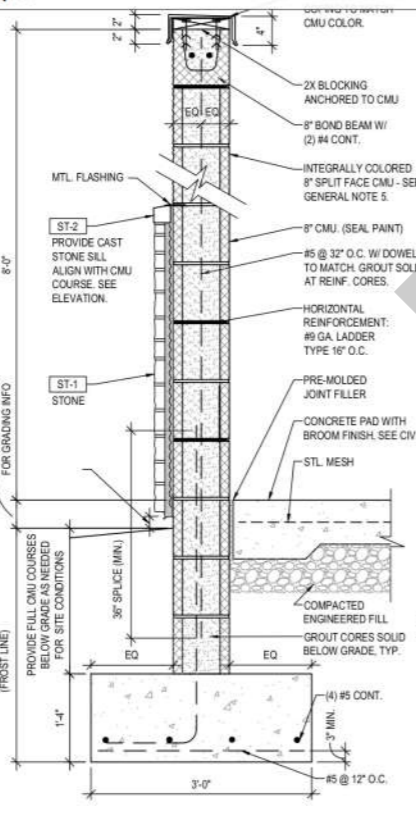
7 MONUMENT SIGN ELEVATION
SCALE: 3/8" = 1'-0"



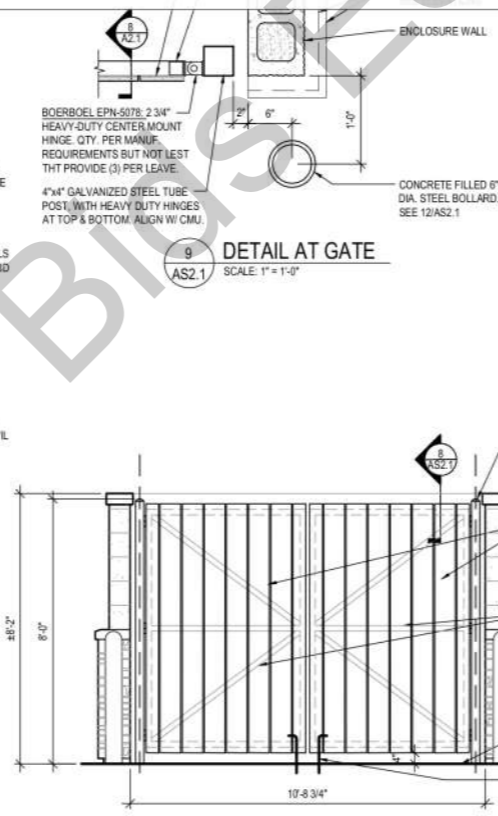
6 MONUMENT SIGN ELEVATION
SCALE: 3/8" = 1'-0"



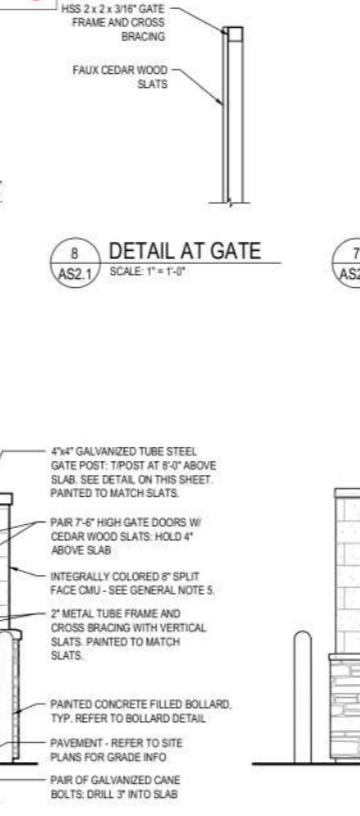
5 SECTION THRU MONUMENT SIGN
SCALE: 1" = 1'-0"



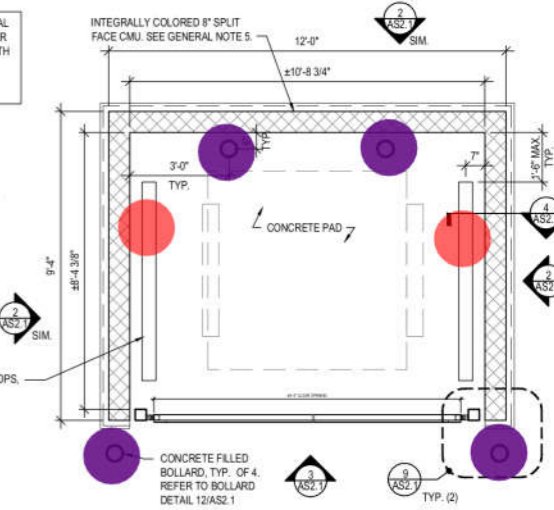
4 SECTION AT SCREEN WALL
SCALE: 1" = 1'-0"



3 ELEVATION AT ENCLOSURE
SCALE: 3/8" = 1'-0"



2 ELEVATION AT ENCLOSURE
SCALE: 3/8" = 1'-0"



1 PLAN AT ENCLOSURE
SCALE: 3/8" = 1'-0"

- 2'-0"x2'-0" Wall Footing Reinf. W/ (2) #5 Cont. Top & Bottom
- 12"x12" CMU Reinf. W/ #4 @ 48" O.C + 8"x8" CMU (Grout Solid)
- 2'-0"x1'-0" Wall Footing Reinf. W/ (2) #5 Cont. Top & Bottom
- 2'-2"x2'-0" Wall Footing Reinf. W/ (2) #5 Cont. Top & Bottom
- 12"x12" CMU Reinf. W/ #4 @ 24" O.C (Grout Solid)
- 2'-2"x1'-4" Wall Footing Reinf. W/ (2) #5 Cont. Top & Bottom
- 8"x12" CMU Reinf. W/ #4 @ 24" O.C (Grout Solid)
- TS3.0: 3'-0"x3'-0"x1'-0" Reinf. (4) - #4 E.W Top & Bot.
- TS4.0: 4'-0"x4'-0"x1'-0" Reinf. (6) - #4 E.W Top & Bot.
- F3.0: 3'-0"x3'-0"x2'-0" Reinf. W/ (4) - #4 EW Top. & Bot.
- P2.6: 2'-6"x2'-6"x1'-8" Reinf. W/ (8) #7 Vert. W/ #3 Ties @ 12" O.C
- F3.0A: 3'-0"x3'-0"x1'-0" Reinf. W/ (4) - #4 EW Top. & Bot.
- Interior Thickened Portion of Slab Reinf. W/ (3) #5 Cont.
- 2'-0"x1'-0" Step Wall Footing
- 2'-0"x2'-0" Step Wall Footing

ELEVATION LEGEND

LEVEL DESIGNATION	ELEVATION (UNK)	PROJECT
TOP OF JOINT (B. MECH. ATTCH)	12'-0"	
TRUSS BRG (TYPICAL UNK)	12'-0"	
JOINT BRG (B. MECH. ATTCH)	11'-0"	
SLAB ON GRADE	7'-0"	

- 486.2 FT
- 533.6 FT
- 47.2 FT
- 67.1 FT
- 78.8 FT
- 152.5 FT
- 152.5 FT
- 15.0 EA
- 7.0 EA
- 5.0 EA
- 2.0 EA
- 1.0 EA
- 416.9 FT
- 19.6 FT
- 8.2 FT

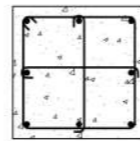
ELEVATIONS ON PLAN MAY VARY FROM ELEVATIONS SHOWN IN THE ELEVATION LEGEND. SEE PLAN FOR SPECIFIC ELEVATION DATA ITEMS.
 * DENOTES THE LEVEL THAT IS THE PROJECT DATUM

SEE SHEET S2.0 FOR TYPICAL DETAILS.

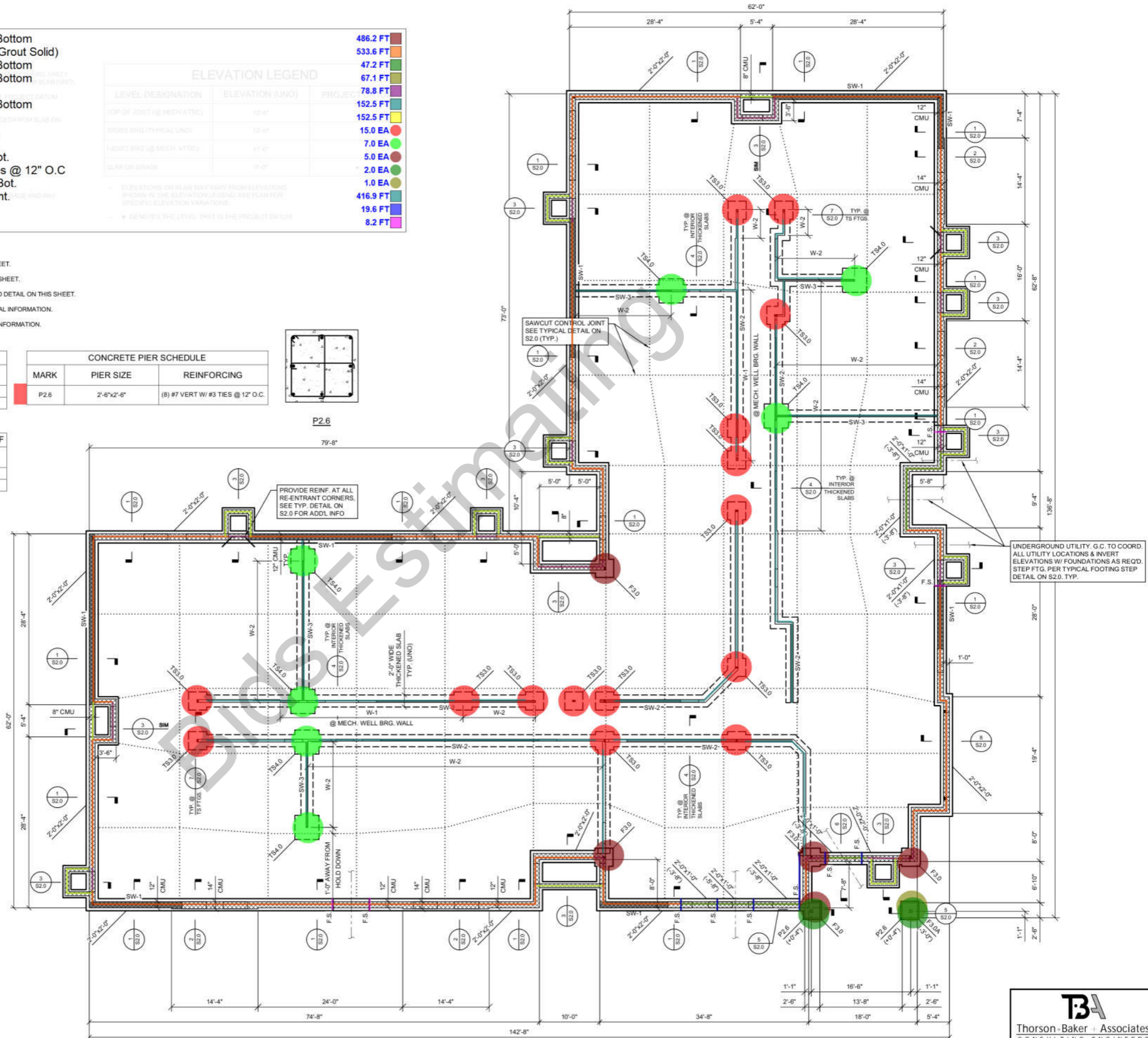
- F.S. DENOTES FOOTING STEP. SEE TYPICAL DETAIL ON S2.0.
- FX.X DENOTES SPREAD FOOTINGS. SEE FOOTING SCHEDULE THIS SHEET.
- TSX.X DENOTES THICKENED SLAB FOOTING. SEE SCHEDULE ON THIS SHEET.
- PX.X DENOTES CONCRETE PIER. SEE CONCRETE PIER SCHEDULE AND DETAIL ON THIS SHEET.
- SW-X DENOTES WOOD SHEAR WALLS. SEE SHEET S3.3 FOR ADDITIONAL INFORMATION.
- W-X DENOTES WALL TYPE. SEE SCHEDULE ON S3.0 FOR ADDITIONAL INFORMATION.

FOOTING SCHEDULE		X,XXX PSF
MARK	FOOTING SIZE LENGTH x WIDTH x DEPTH	REINFORCING
F3.0	3'-0"x3'-0"x2'-0"	(4) - #4 E.W. TOP & BOT.
F3.0A	3'-0"x3'-0"x1'-0"	(4) - #4 E.W. TOP & BOT.

CONCRETE PIER SCHEDULE		
MARK	PIER SIZE	REINFORCING
P2.6	2'-6"x2'-6"	(8) #7 VERT W/ #3 TIES @ 12" O.C.



THICKENED SLAB FOOTING SCHEDULE		X,XXX PSF
MARK	FOOTING SIZE LENGTH x WIDTH x DEPTH	REINFORCING
TS3.0	3'-0"x3'-0"x1'-0"	(4) - #4 E.W. TOP & BOT.
TS4.0	4'-0"x4'-0"x1'-0"	(6) - #4 E.W. TOP & BOT.



UNDERGROUND UTILITY, G.C. TO COORD. ALL UTILITY LOCATIONS & INVERT ELEVATIONS W/ FOUNDATIONS AS REQ'D. STEP FTG. PER TYPICAL FOOTING STEP DETAIL ON S2.0, TYP.

- 4" Concrete Slab-on-Grade W/ One Layer of 6x6-W2.1xW2.1 W.W.F 11684.2 SQ FT
- Saw Cut Control Joint: 1/8" Wide x 1" Deep Sawcut 1657.8 FT
- Slab Edge 610.2 FT
- 2-1/2" Concrete Slab W/ #4 @ 9" O.C EA Way on 1-1/2" 22 GA. Deck 355.7 SQ FT

ELEVATION LEGEND		PROJECT DATUM
TRUSS BRG (TYPICAL UNO)	12'-0"	
I-JOIST BRG (@ MECH. ATTIC)	11'-0"	
SLAB ON GRADE	0'-0"	

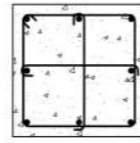
- ELEVATIONS NOTED THUS ("X-X") ARE TO TOP OF FOOTING REFERENCED FROM SLAB ON GRADE ELEVATION (UNO).
- TOP OF EXTERIOR FOOTING ELEVATION = (-1'-8") (UNO).
- CONTINUOUS FOOTINGS ARE MARKED THUS: WIDTH x DEPTH (TOP OF FTG. EL.)
- PROVIDE (2) #4x3'-0" LONG AT ALL RE-ENTRANT CORNERS.
- SEE ARCHITECTURAL DRAWINGS FOR EXTENT AND FINISH OF SLAB ON GRADE AND ANY FLOOR DEPRESSIONS, UNDERFLOOR CONDUITS, DRAINS, ETC.
- SEE SHEETS S0.1, S0.2 AND S0.3 FOR GENERAL NOTES.
- SEE SHEET S2.0 FOR TYPICAL DETAILS.
- F.S. DENOTES FOOTING STEP. SEE TYPICAL DETAIL ON S2.0.
- FX.X DENOTES SPREAD FOOTINGS. SEE FOOTING SCHEDULE THIS SHEET.
- TSX.X DENOTES THICKENED SLAB FOOTING. SEE SCHEDULE ON THIS SHEET.
- PX.X DENOTES CONCRETE PIER. SEE CONCRETE PIER SCHEDULE AND DETAIL ON THIS SHEET.
- SW-X DENOTES WOOD SHEAR WALLS. SEE SHEET S3.3 FOR ADDITIONAL INFORMATION.
- W-X DENOTES WALL TYPE. SEE SCHEDULE ON S3.0 FOR ADDITIONAL INFORMATION.

ELEVATIONS ON PLAN MAY VARY FROM ELEVATIONS SHOWN IN THE ELEVATION LEGEND. SEE PLAN FOR SPECIFIC ELEVATION VARIATIONS.

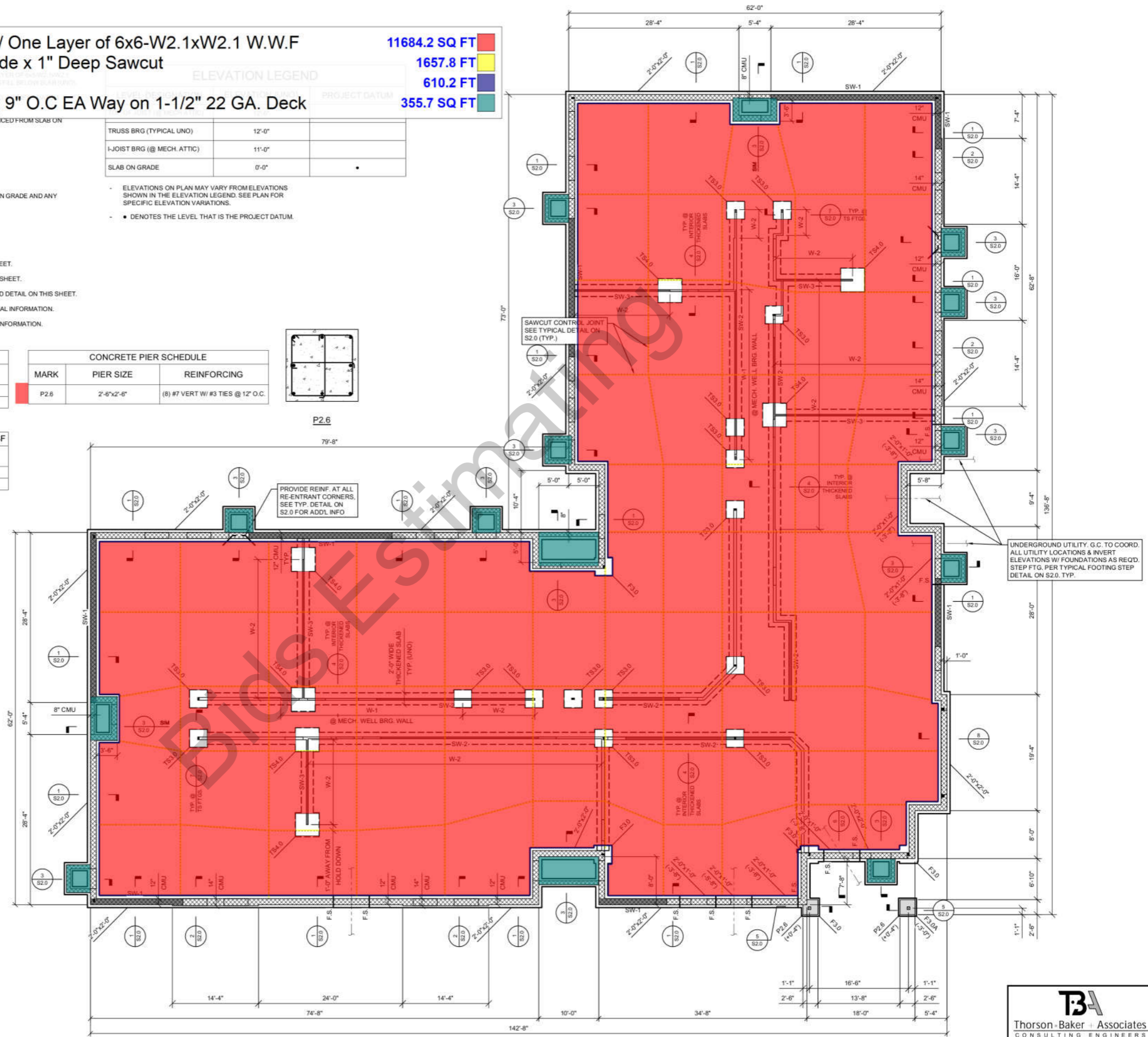
• DENOTES THE LEVEL THAT IS THE PROJECT DATUM.

FOOTING SCHEDULE			X,XXX PSF
MARK	FOOTING SIZE LENGTH x WIDTH x DEPTH	REINFORCING	
F3.0	3'-0"x3'-0"x2'-0"	(4) - #4 E.W. TOP & BOT.	
F3.0A	3'-0"x3'-0"x1'-0"	(4) - #4 E.W. TOP & BOT.	

CONCRETE PIER SCHEDULE		
MARK	PIER SIZE	REINFORCING
P2.6	2'-6"x2'-6"	(8) #7 VERT W/ #3 TIES @ 12" O.C.

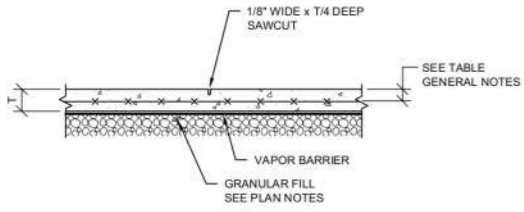


THICKENED SLAB FOOTING SCHEDULE			X,XXX PSF
MARK	FOOTING SIZE LENGTH x WIDTH x DEPTH	REINFORCING	
TS3.0	3'-0"x3'-0"x1'-0"	(4) - #4 E.W. TOP & BOT.	
TS4.0	4'-0"x4'-0"x1'-0"	(6) - #4 E.W. TOP & BOT.	

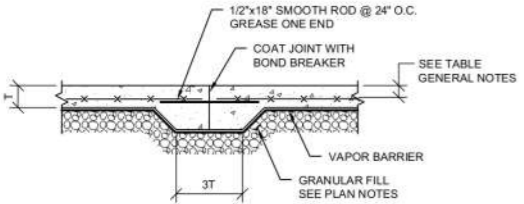


Step Wall Footing

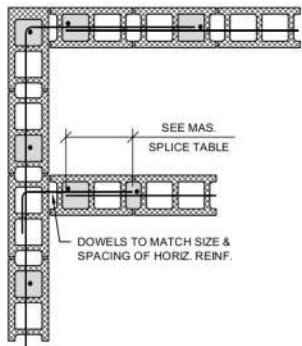
8.3 SQ FT



CONTROL JOINT
(SEE PLAN FOR LOCATIONS)

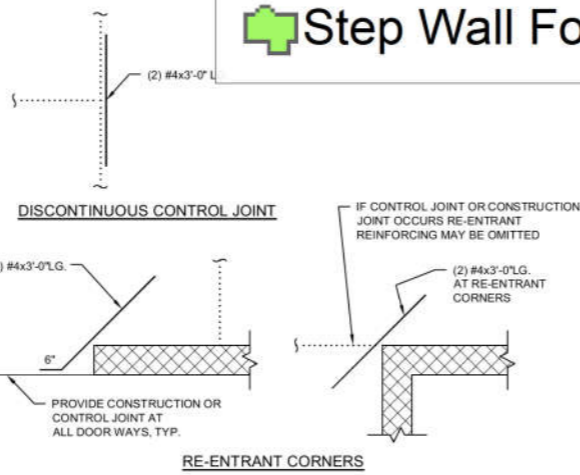


CONSTRUCTION JOINT



SINGLE LAYER REINFORCING

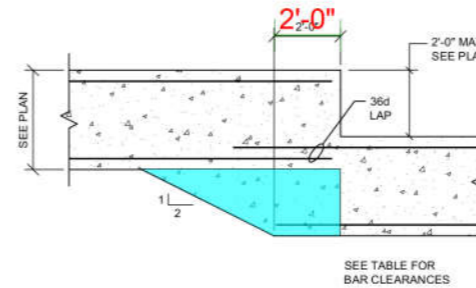
TYPICAL MASONRY WALL REINF. DETAILS



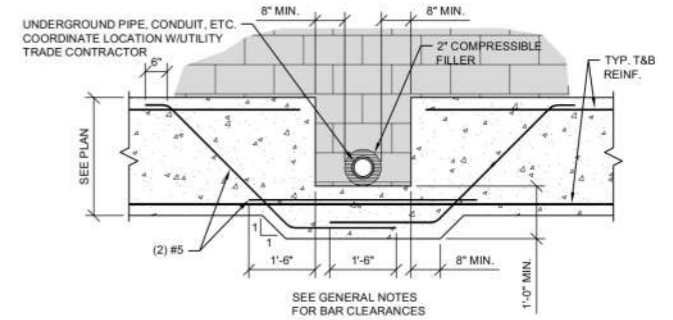
DISCONTINUOUS CONTROL JOINT

RE-ENTRANT CORNERS

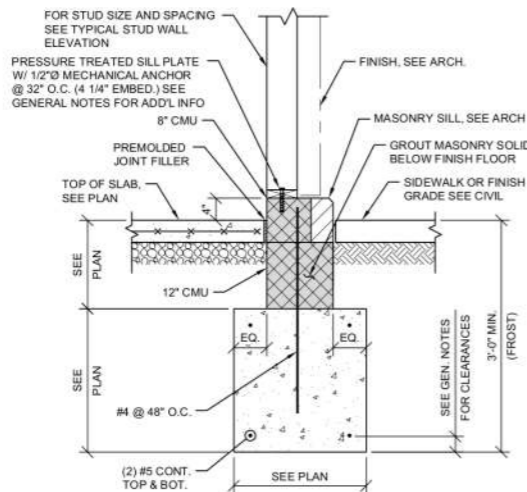
TYPICAL RE-ENTRANT AND DISCONTINUOUS CONTROL JOINT SLAB REINFORCING



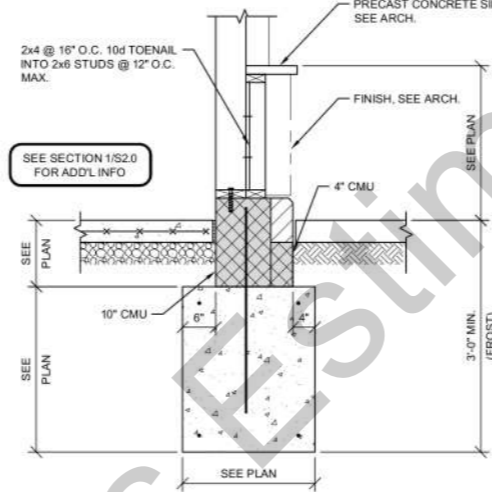
TRENCH FOOTING STEP DETAIL



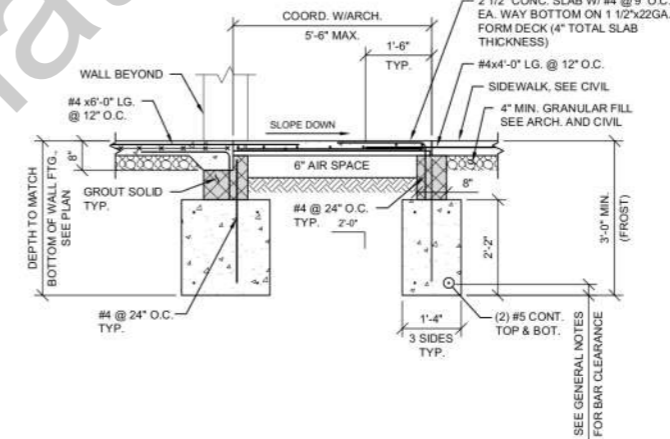
TYPICAL DETAIL AT UNDERGROUND UTILITY PENETRATION



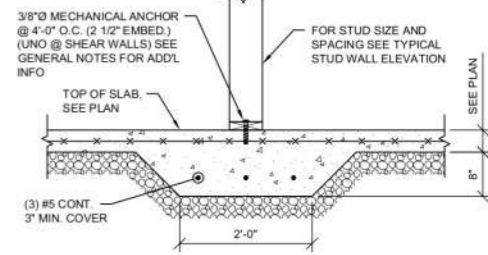
SECTION 1
3/4" = 1'-0"



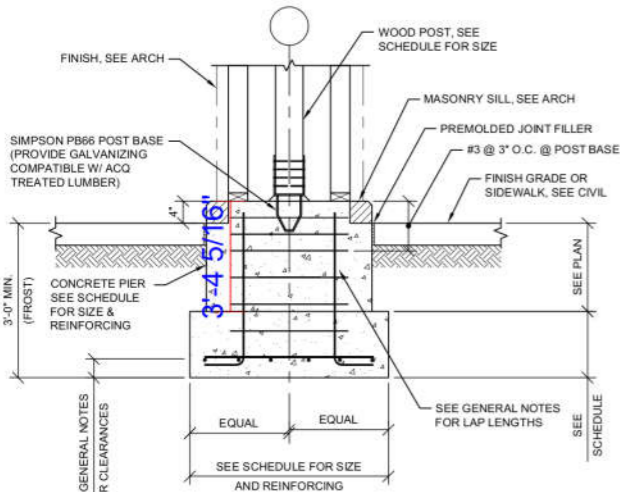
SECTION 2
3/4" = 1'-0"



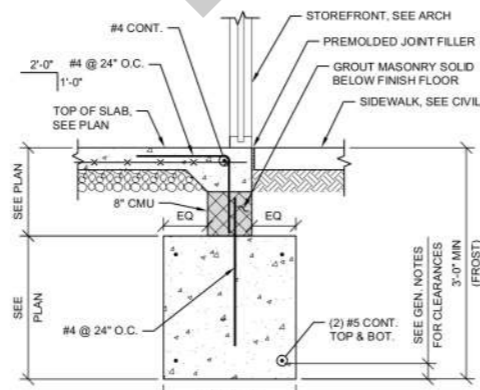
SECTION 3
1/2" = 1'-0"



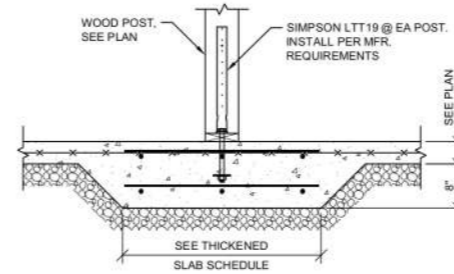
SECTION 4
3/4" = 1'-0"



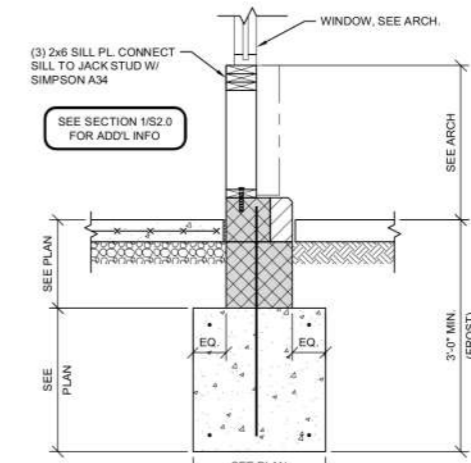
SECTION 5
3/4" = 1'-0"



SECTION 6
3/4" = 1'-0"



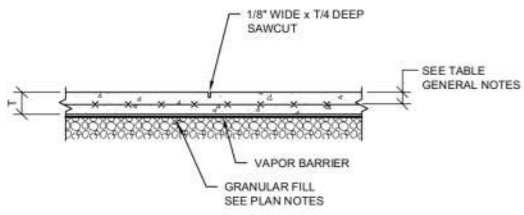
SECTION 7
3/4" = 1'-0"



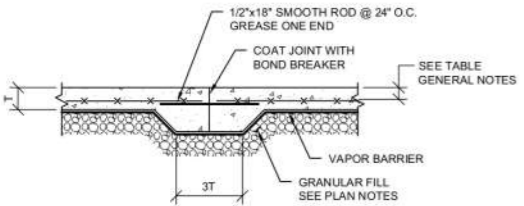
SECTION 8
3/4" = 1'-0"

■ Interior Thickened Portion of Slab
■ Slab Edge

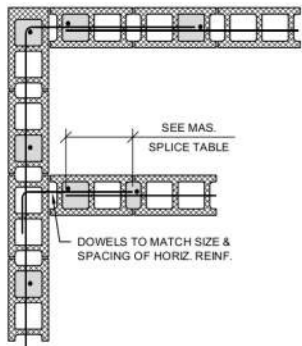
■ 1.8 SQ FT
■ 0.3 SQ FT



CONTROL JOINT
(SEE PLAN FOR LOCATIONS)

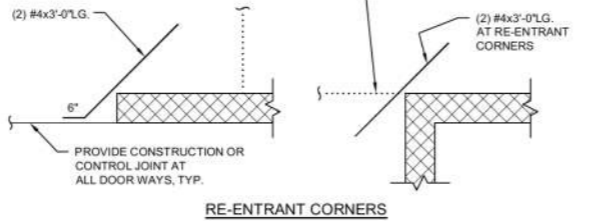
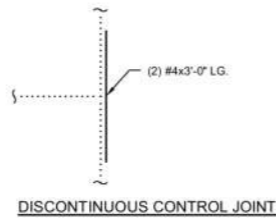


CONSTRUCTION JOINT

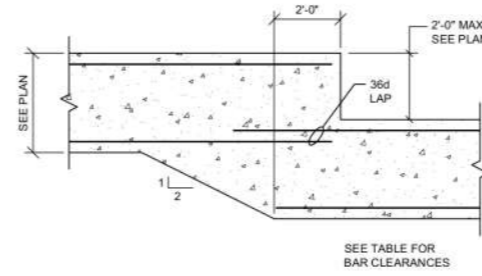


SINGLE LAYER REINFORCING

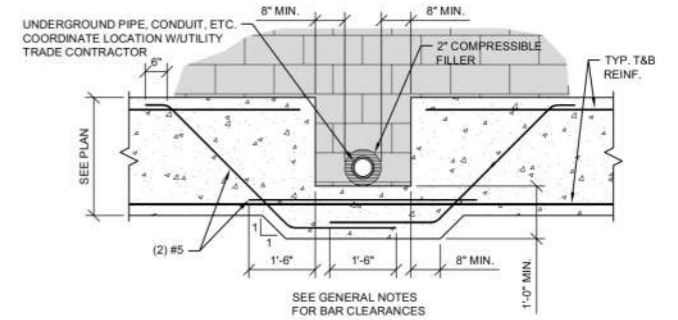
TYPICAL MASONRY WALL REINF. DETAILS



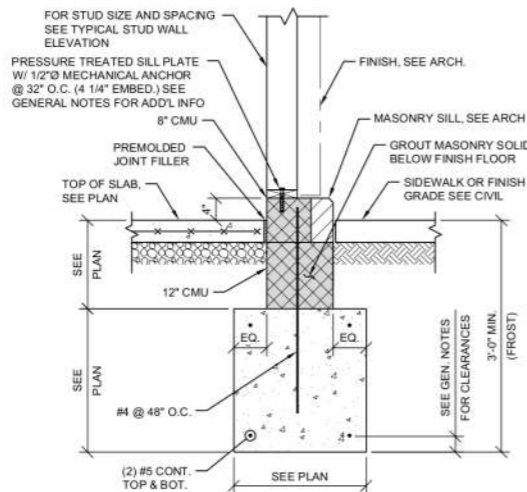
TYPICAL RE-ENTRANT AND DISCONTINUOUS CONTROL JOINT SLAB REINFORCING



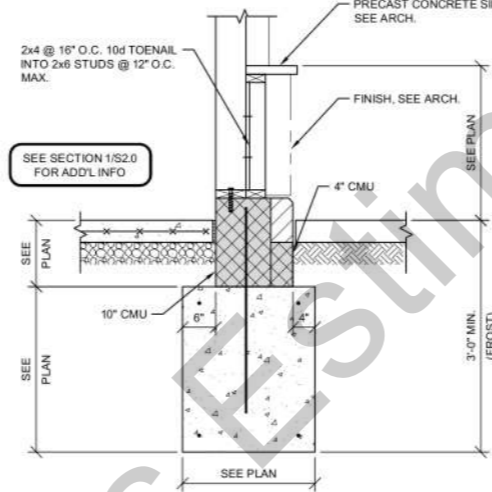
TRENCH FOOTING STEP DETAIL



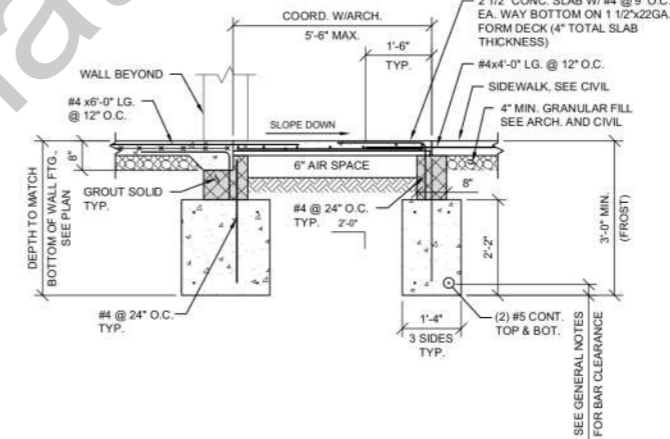
TYPICAL DETAIL AT UNDERGROUND UTILITY PENETRATION



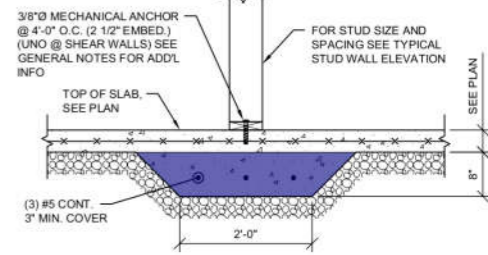
SECTION 1
3/4" = 1'-0"



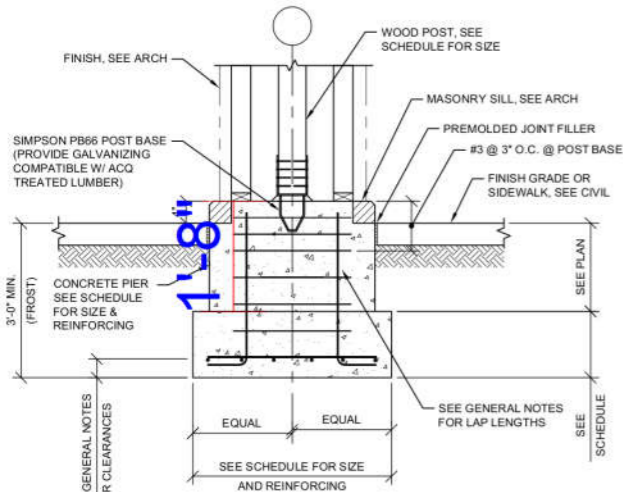
SECTION 2
3/4" = 1'-0"



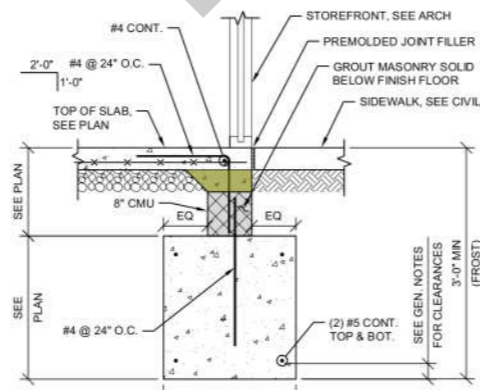
SECTION 3
1/2" = 1'-0"



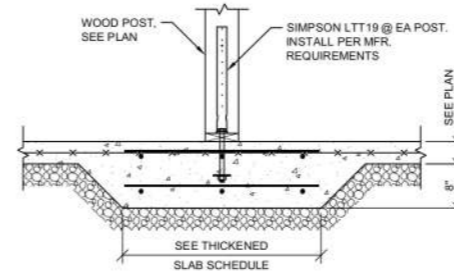
SECTION 4
3/4" = 1'-0"



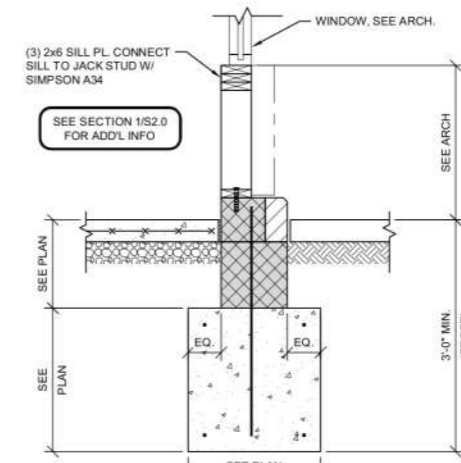
SECTION 5
3/4" = 1'-0"



SECTION 6
3/4" = 1'-0"



SECTION 7
3/4" = 1'-0"



SECTION 8
3/4" = 1'-0"