

BIDS ESTIMATING

Client: (Hidden for Privacy)
 Project Name: (Hidden for Privacy)
 Project ID: (Hidden for Privacy)
 Last Updated: 28/04/2022

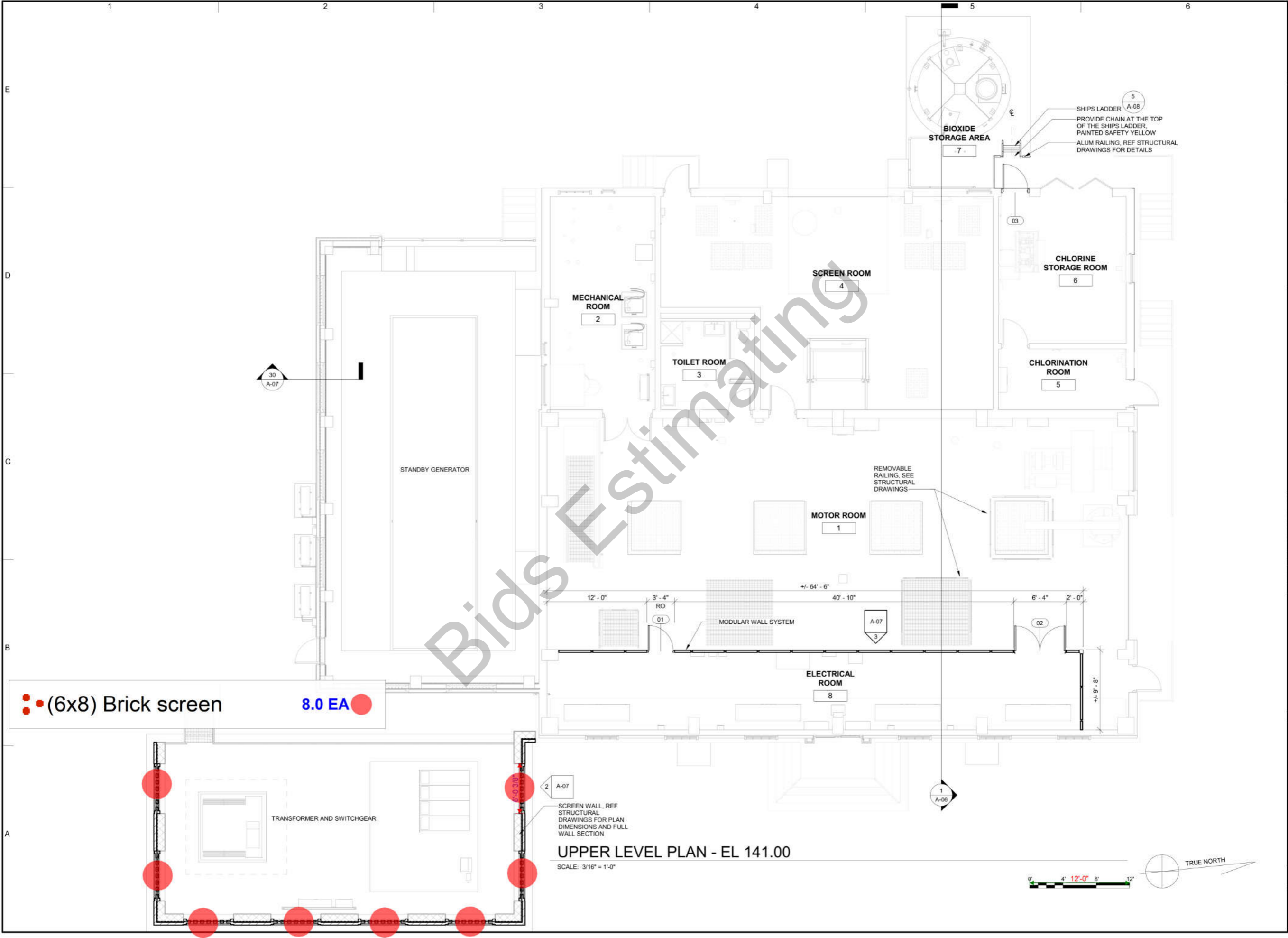


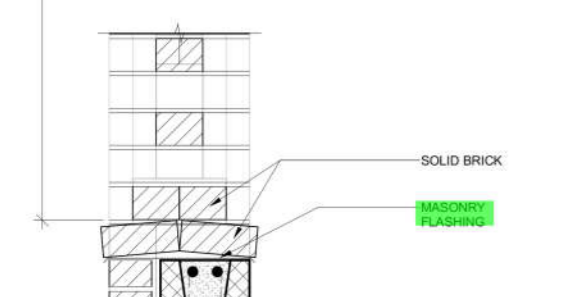
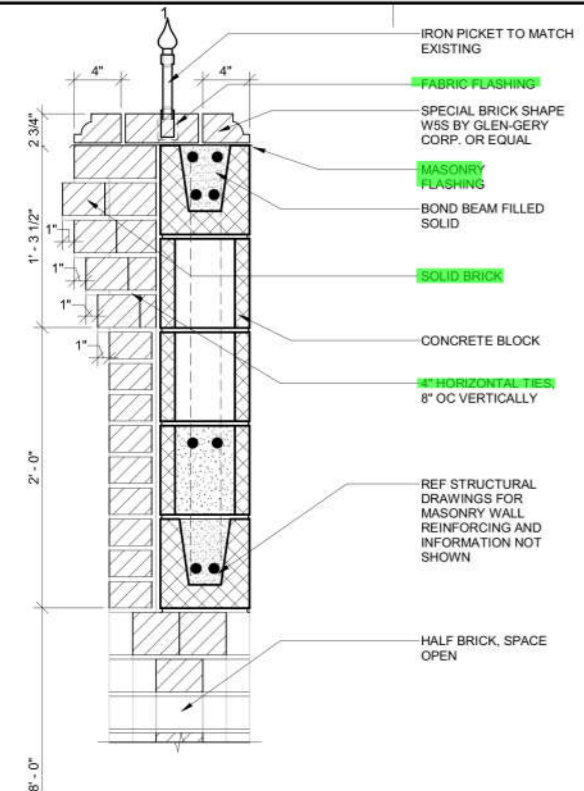
Website: bidsestimating.com
 Email: info@bidsestimating.com
 Contact: +1 (832) 346 0507

Quantity Takeoff Sheet

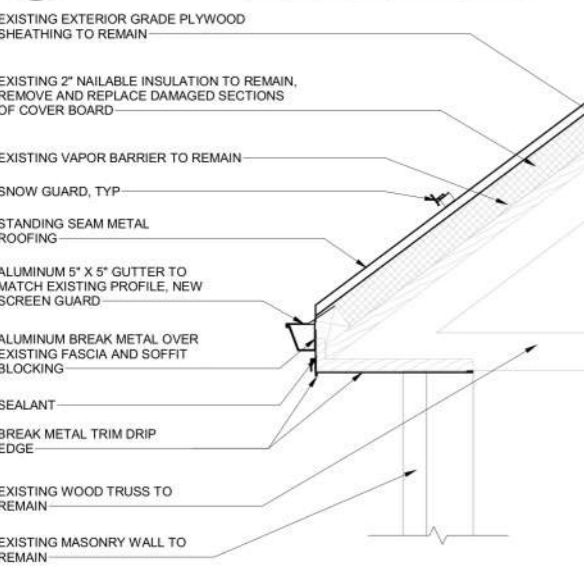
CMU

ITEM #	REF. SHEET	DETAIL	CSI SECT	Sub Contractor	DESCRIPTION	QTY.	WASTAGE	QTY WITH WASTAGE	UNIT	UNIT LABOR HOURS	TOTAL LABOR HOURS	PER HOUR LABOR RATE	TOTAL LABOR COST	UNIT MATERIAL COST	TOTAL MATERIAL COST	ITEM COST	TRADE COST	
			DIV-04	Masonry													\$ 78,451	
					CMU													
1	A-03,A-07	S-12,16	DIV-04	Mason - CMU	12" CMU	678	5%	712	SF	0.180	128.14	\$ 57.3	\$ 7,336.1	\$ 6.8	\$ 4,805.3	\$ 12,141		
2	A-03,A-07	S-12,16	DIV-04	Mason - CMU	Grout	14	5%	14	CY	1.100	15.66	\$ 57.3	\$ 896.6	\$ 65.5	\$ 932.6	\$ 1,829		
3	A-03,A-07	S-12,16	DIV-04	Mason - CMU	(8"x12") Bond Beam	267	5%	280	LF	0.120	33.64	\$ 57.3	\$ 1,926.0	\$ 7.7	\$ 2,152.6	\$ 4,079		
4	A-03,A-07	S-12,16	DIV-04	Mason - CMU	#5 Bar vertically reinforcement @ cmu wall	1,943	5%	2,040	LBS	0.010	20.40	\$ 57.3	\$ 1,167.9	\$ 0.8	\$ 1,693.1	\$ 2,861		
5	A-03,A-07	S-12,16	DIV-04	Mason - CMU	6 #5 Bars	557	5%	585	LBS	0.010	5.85	\$ 57.3	\$ 334.8	\$ 0.8	\$ 485.4	\$ 820		
6	A-03,A-07	S-12,16	DIV-04	Mason - CMU	Horizontal ladder reinf. w/integrated brick anchors	801	5%	841	LF	0.020	16.82	\$ 57.3	\$ 963.0	\$ 0.3	\$ 275.9	\$ 1,239		
					Brick Veneer													
7	A-03,A-07	S-12,16	DIV-04	Mason - Brick Veneer	4" Brick Veneer	1,034	5%	1,085	SF	0.200	217.04	\$ 57.3	\$ 12,425.3	\$ 8.2	\$ 8,920.1	\$ 21,345		
8	A-03,A-07	S-12,16	DIV-04	Mason - Brick Veneer	Brick Screen	384	5%	403	SF	0.200	80.64	\$ 57.3	\$ 4,616.6	\$ 8.2	\$ 3,314.3	\$ 7,931		
9	A-03,A-07	S-12,16	DIV-04	Mason - Brick Veneer	(4"x4") Brick Soldier	224	5%	235	LF	0.120	28.22	\$ 57.3	\$ 1,615.8	\$ 13.5	\$ 3,175.2	\$ 4,791		
10	A-03,A-07	S-12,16	DIV-04	Mason - Brick Veneer	4" Horizontal ties 8" oc vertically,	585	0%	585	EA	0.020	11.69	\$ 57.3	\$ 669.3	\$ 0.5	\$ 315.7	\$ 985		
					Misc. Items													
11	A-03,A-07	S-12,16	DIV-04	Mason - Brick Veneer	(1'-0") Brick sill	48	5%	50	LF	0.150	7.56	\$ 57.3	\$ 432.8	\$ 5.8	\$ 292.3	\$ 725		
12	A-03,A-07	S-12,16	DIV-04	Mason - Brick Veneer	Fabric flashing,	89	5%	93	LF	0.036	3.36	\$ 57.3	\$ 192.6	\$ 0.8	\$ 74.8	\$ 267		
13	A-03,A-07	S-12,16	DIV-04	Mason - Brick Veneer	Masonry flashing Iron picket	178	5%	187	LF	0.046	8.60	\$ 57.3	\$ 492.2	\$ 1.5	\$ 289.3	\$ 782		
14	A-03,A-07	S-12,16	DIV-04	Mason - Brick Veneer	Note: Please verify if required. See attached screenshot for detail	270	0%	270	EA	0.325	87.65	\$ 57.3	\$ 5,018.0	\$ 6.6	\$ 1,766.5	\$ 6,785		
15	A-03,A-07	S-12,16	DIV-04	Mason - Brick Veneer	Special brick shape W55 by glen-gery corp Note: See attached screenshot for detail. I have taken linear x2 now as special brick is on both sides.	178	5%	187	LF	0.120	22.43	\$ 57.3	\$ 1,284.0	\$ 18.0	\$ 3,364.2	\$ 4,648		
16	A-03,A-07	S-12,16	DIV-04	Mason - Brick Veneer	Special brick shape W55 by glen-gery corp Note: This is For the center brick of 89 LF	89	5%	93	LF	0.120	11.21	\$ 57.3	\$ 642.0	\$ 18.0	\$ 1,682.1	\$ 2,324		
17	A-03,A-07	S-12,16	DIV-04	Mason - Brick Veneer	16" Precast lintel w/8" bearing EA end	59	5%	62	LF	0.260	16.01	\$ 57.3	\$ 916.5	\$ 31.7	\$ 1,949.4	\$ 2,866		
18	A-03,A-07	S-12,16	DIV-04	Mason - Brick Veneer	2#5 Bar Top & Bottom	200	5%	210	LBS	0.010	2.10	\$ 57.3	\$ 120.4	\$ 0.8	\$ 174.5	\$ 295		
19	A-03,A-07	S-12,16	DIV-04	Mason - Brick Veneer	#3 Open tie @ 8" o.c.	81	5%	85	LBS	0.010	0.85	\$ 57.3	\$ 48.8	\$ 1.1	\$ 93.8	\$ 143		
20	A-03,A-07	S-12,16	DIV-04	Mason - Brick Veneer	4"x6"x1/4" LLV Galv. Angle	494	5%	519	LBS	0.010	5.19	\$ 57.3	\$ 297.2	\$ 2.5	\$ 1,297.8	\$ 1,595		
SUB TOTAL											Total Lab. Hours =	723	Total Lab	\$ 41,396	Total Mat	\$ 37,055	\$ 78,451	\$ 78,451
MATERIAL TAX												9.5%		\$ 3,520		\$ 3,520	\$ 3,520	\$ 3,520
OVERHEAD ANI												25%	\$ 10,349		\$ 9,264	\$ 19,613	\$ 19,613	\$ 19,613
TOTAL BASE BII													\$ 51,745		\$ 49,839	\$ 101,584	\$ 101,584	\$ 101,584

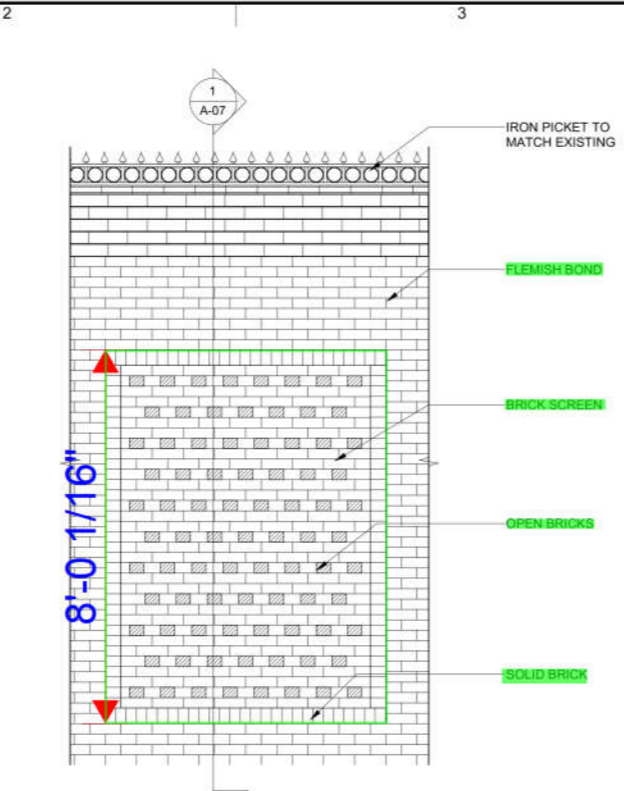




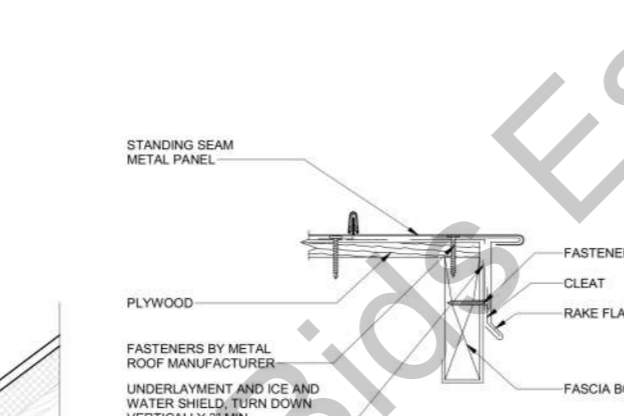
1 SECTION - SCREENWALL AT SWITCHGEAR
 A-07 SCALE: 1 1/2" = 1'-0" 0' 1' 2'



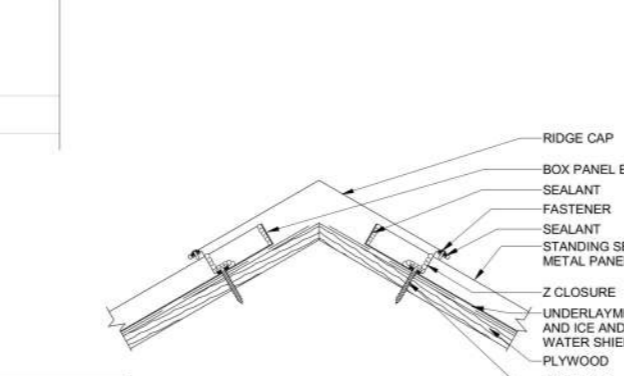
(4"x4") Solid brick (X8) 28.0 FT



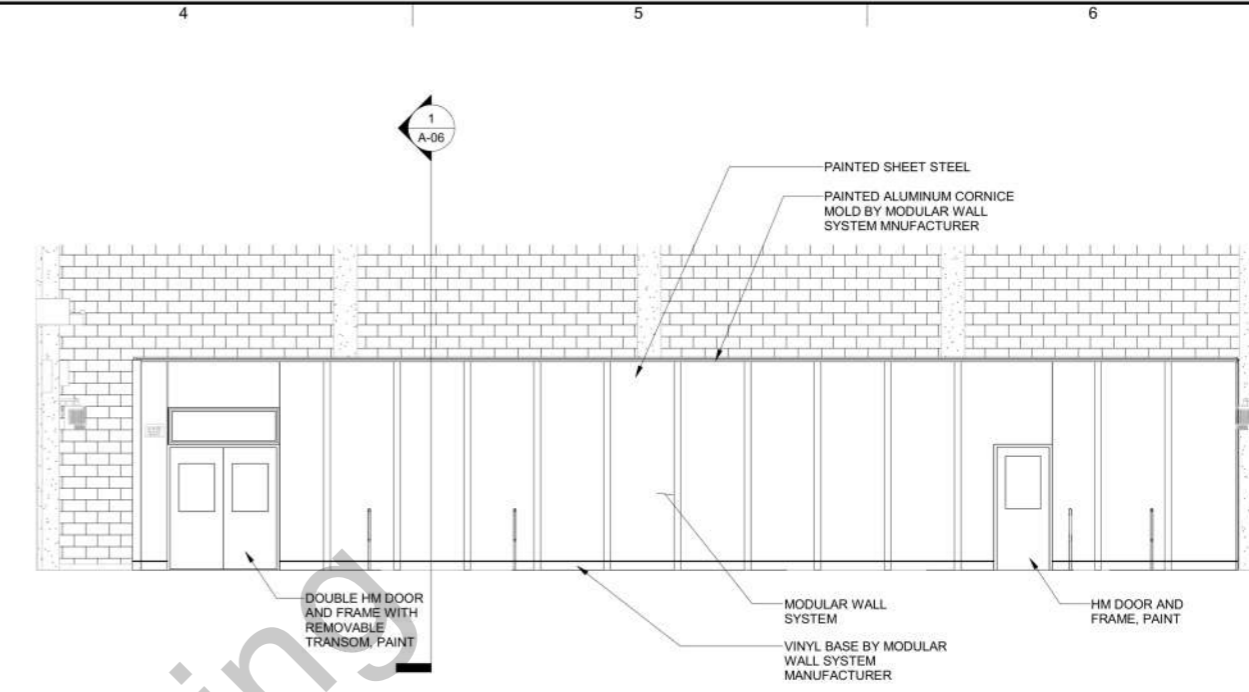
2 SCREENWALL ELEVATION
 A-03 SCALE: 1/2" = 1'-0" 0' 1' 2' 4'



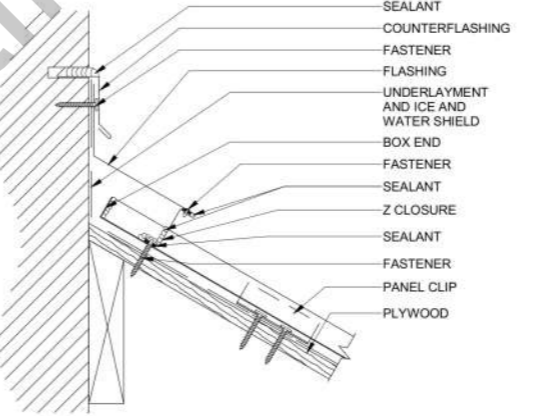
5 DETAIL - ROOF GABLE END
 A-05 SCALE: 3" = 1'-0" 0' 3" 6" 9" 1'



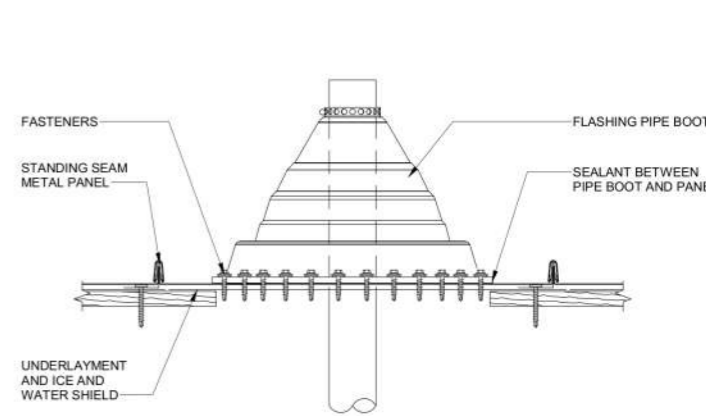
6 DETAIL - ROOF RIDGE
 A-05 SCALE: 3" = 1'-0" 0' 3" 6" 9" 1'



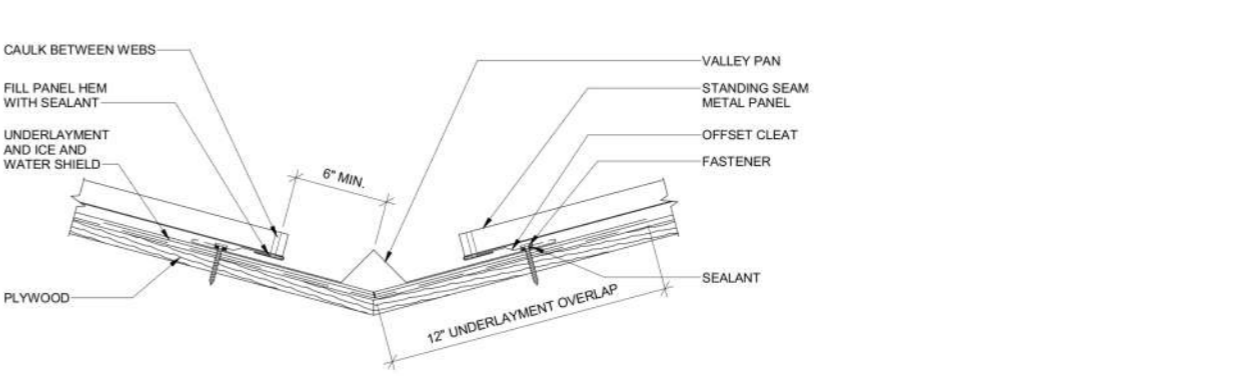
3 INTERIOR ELEVATION - ELECTRICAL ROOM
 A-03 SCALE: 3/16" = 1'-0" 0' 4' 8' 12'



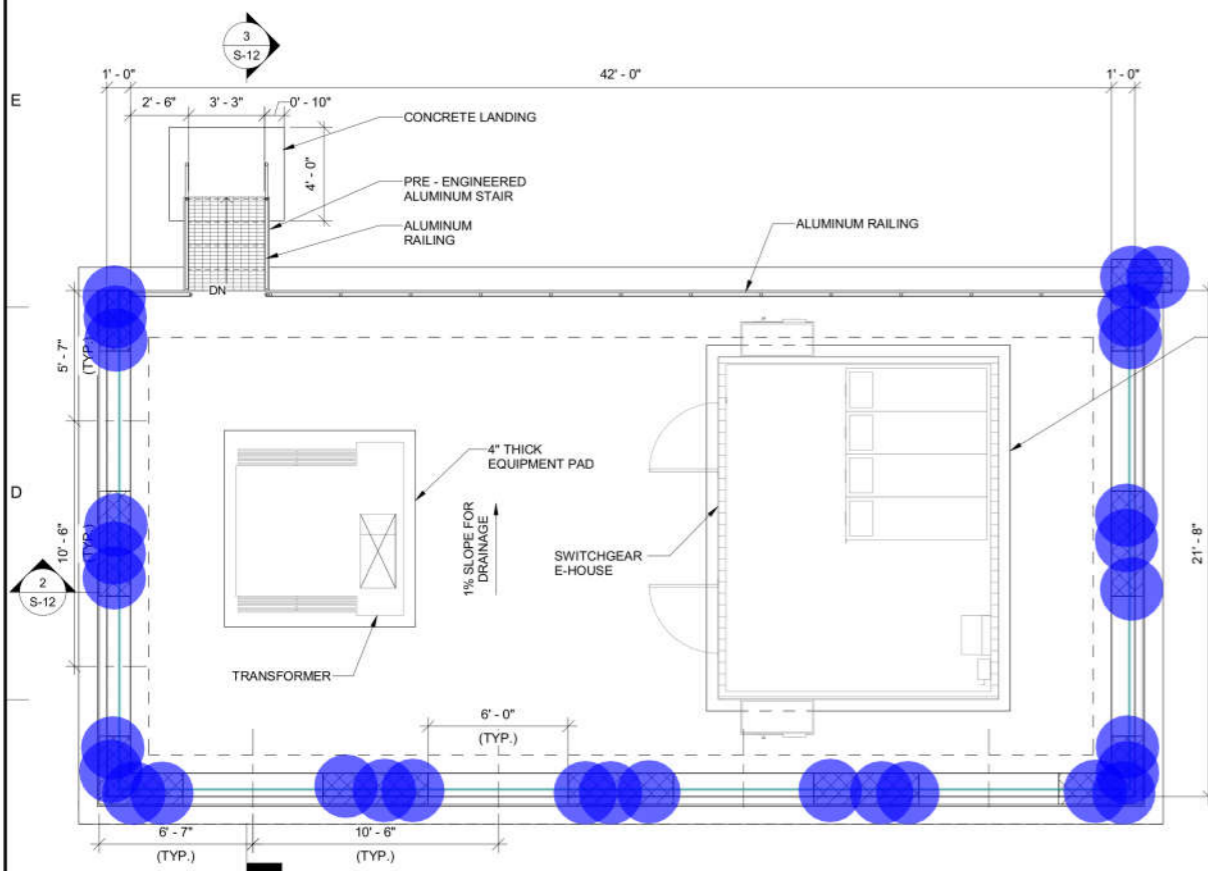
7 DETAIL - ROOF HEADWALL
 A-05 SCALE: 3" = 1'-0" 0' 3" 6" 9" 1'



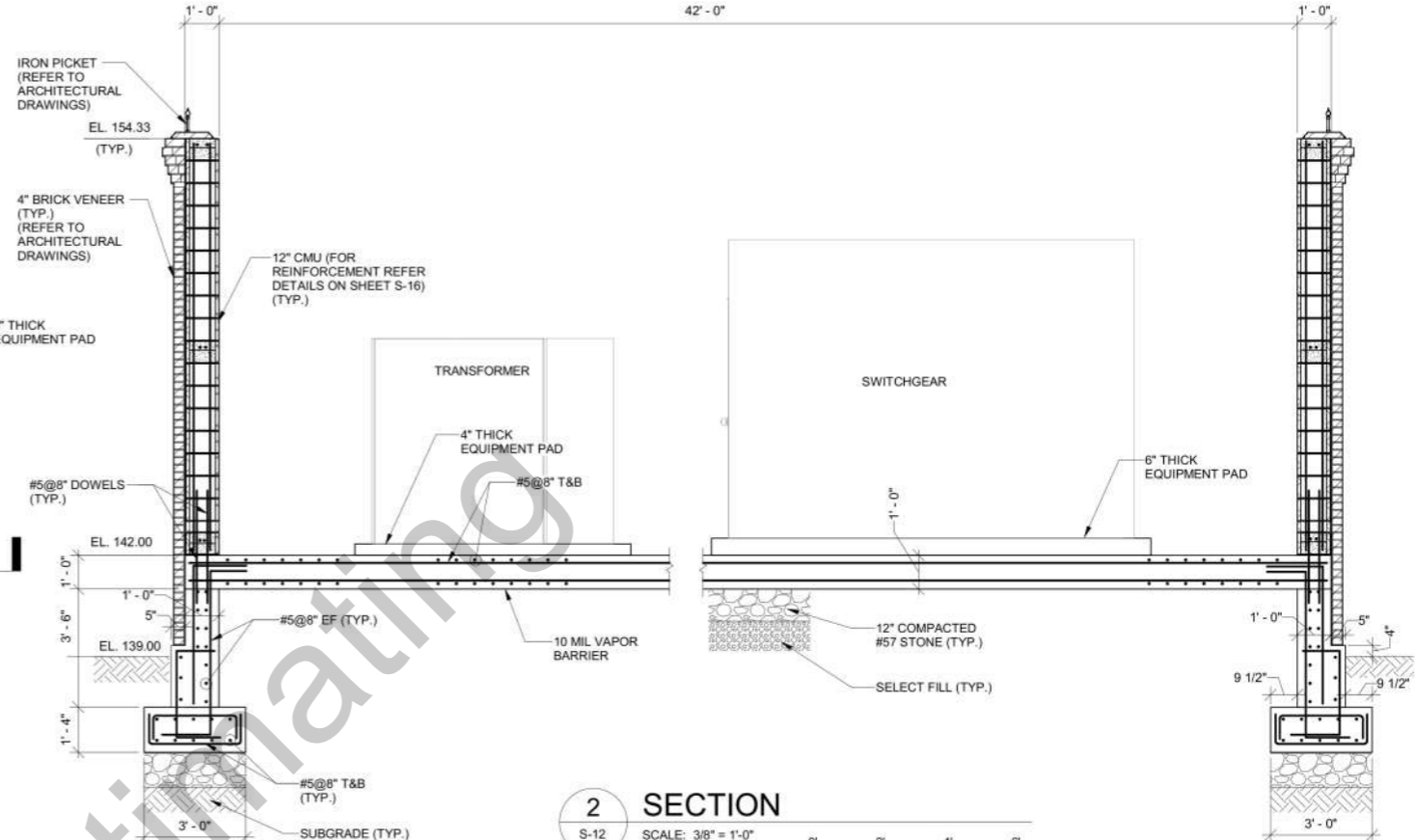
9 DETAIL - ROOF PENETRATION
 A-05 SCALE: 3" = 1'-0" 0' 3" 6" 9" 1'



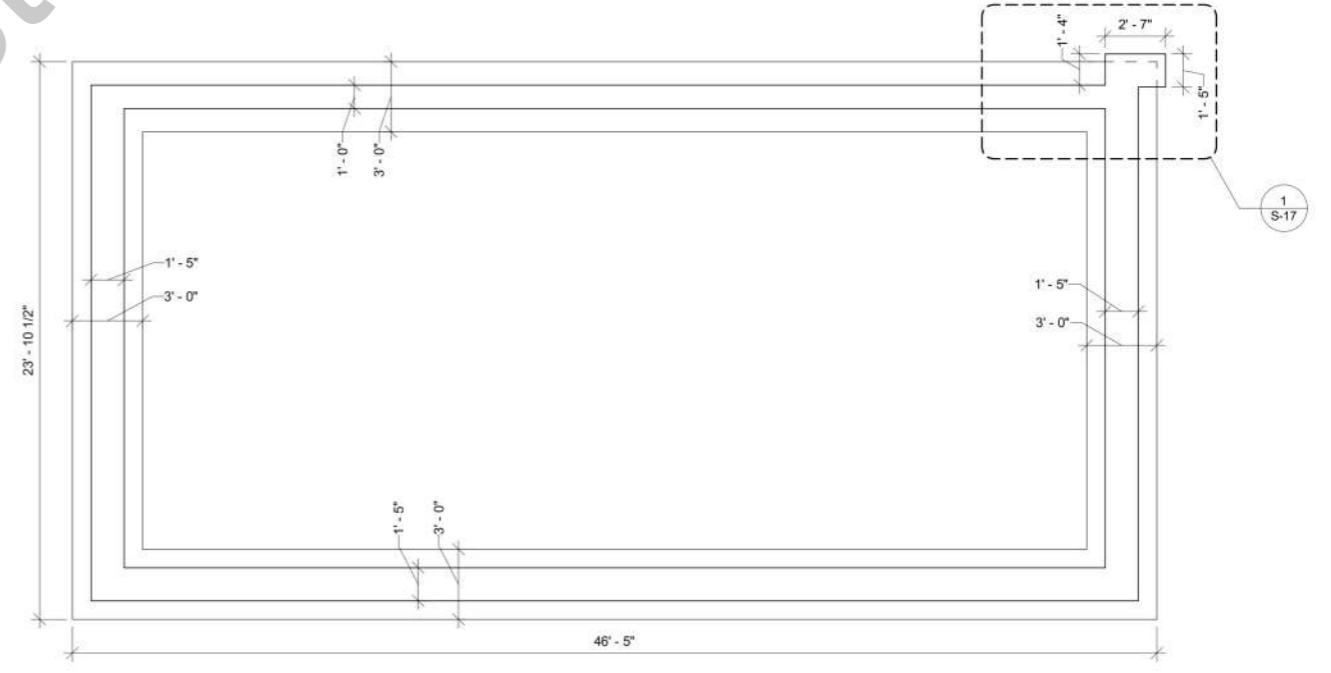
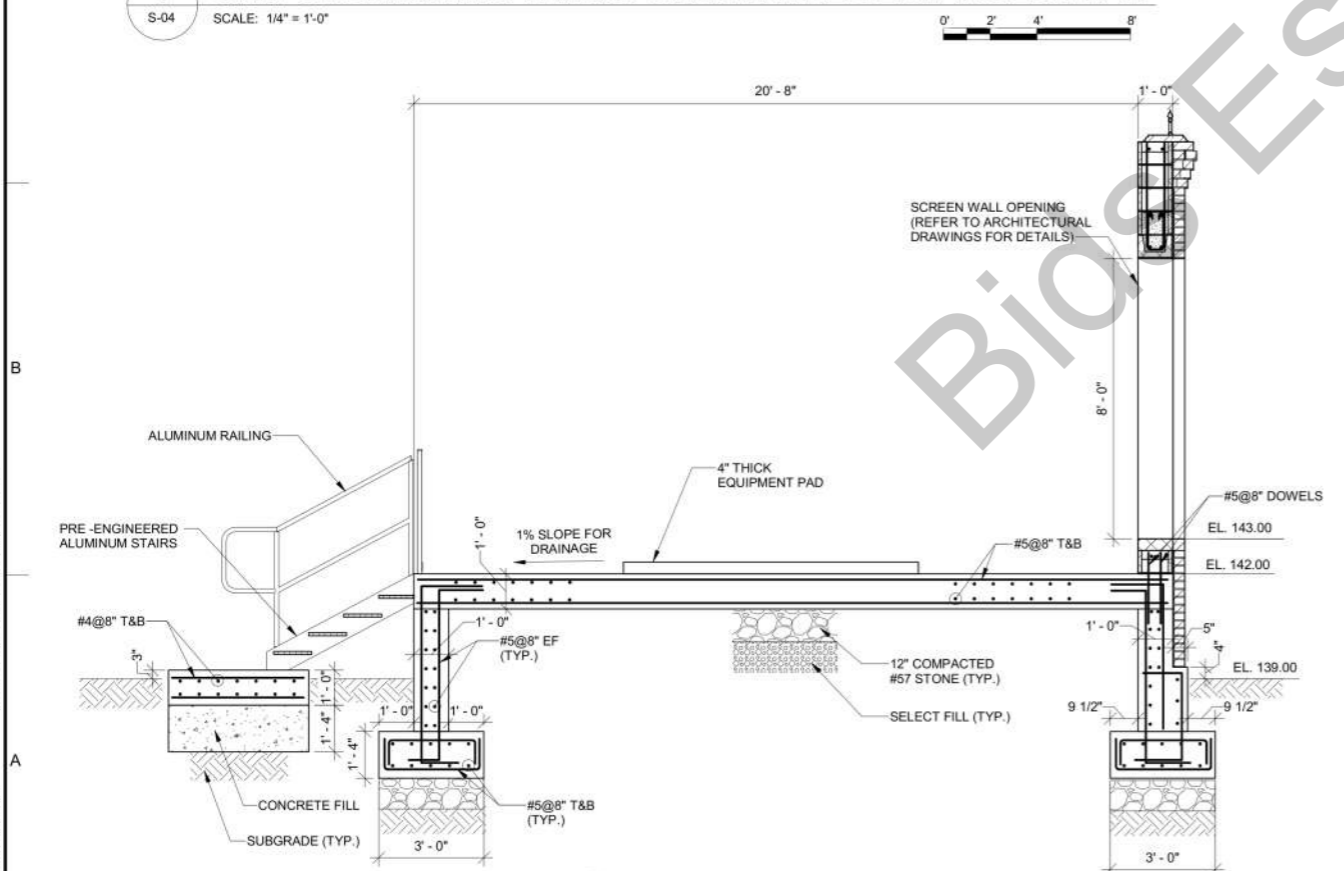
8 DETAIL - ROOF VALLEY
 A-05 SCALE: 3" = 1'-0" 0' 3" 6" 9" 1'



1 SWITCHGEAR AND TRANSFORMER AREA ENLARGED PLAN
 S-04 SCALE: 1/4" = 1'-0"
 0' 2' 4' 8'



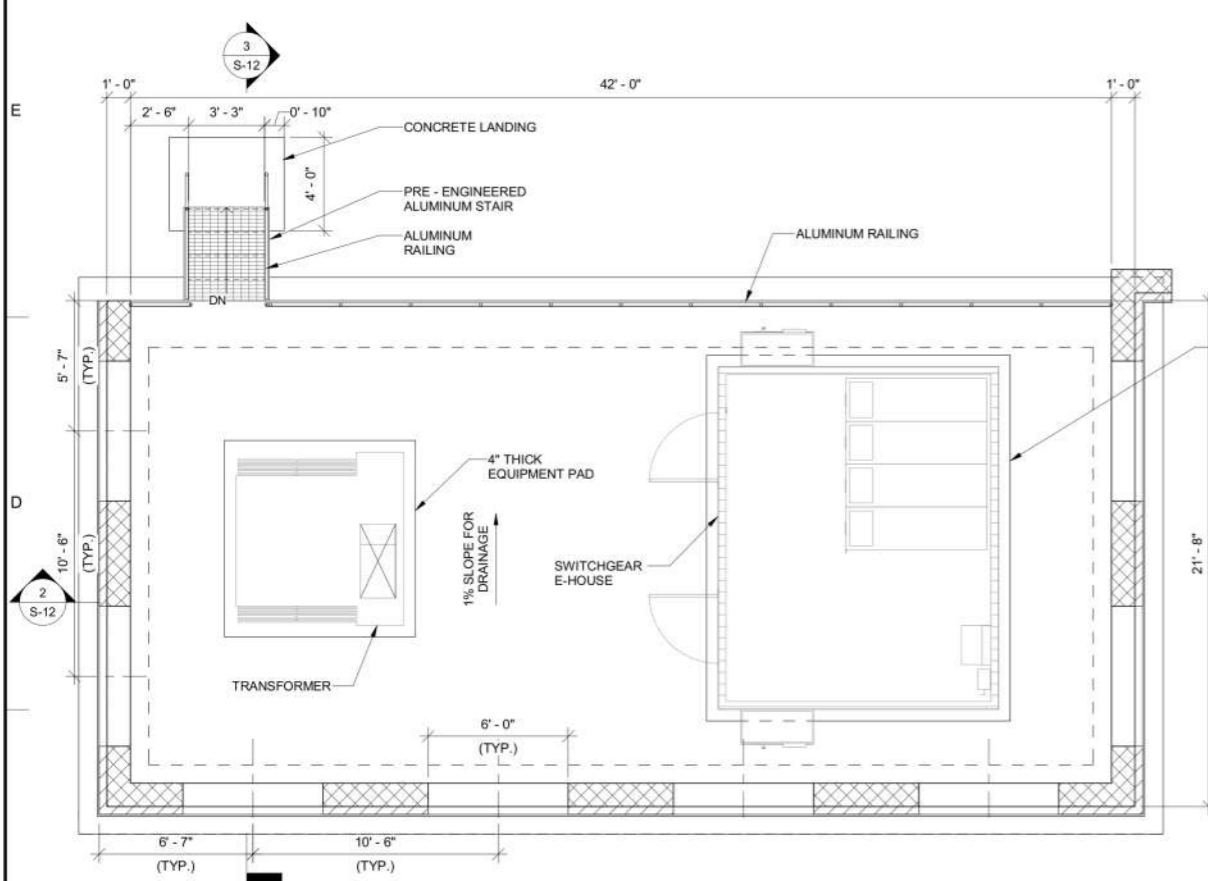
2 SECTION
 S-12 SCALE: 3/8" = 1'-0"
 0' 2' 4' 8'



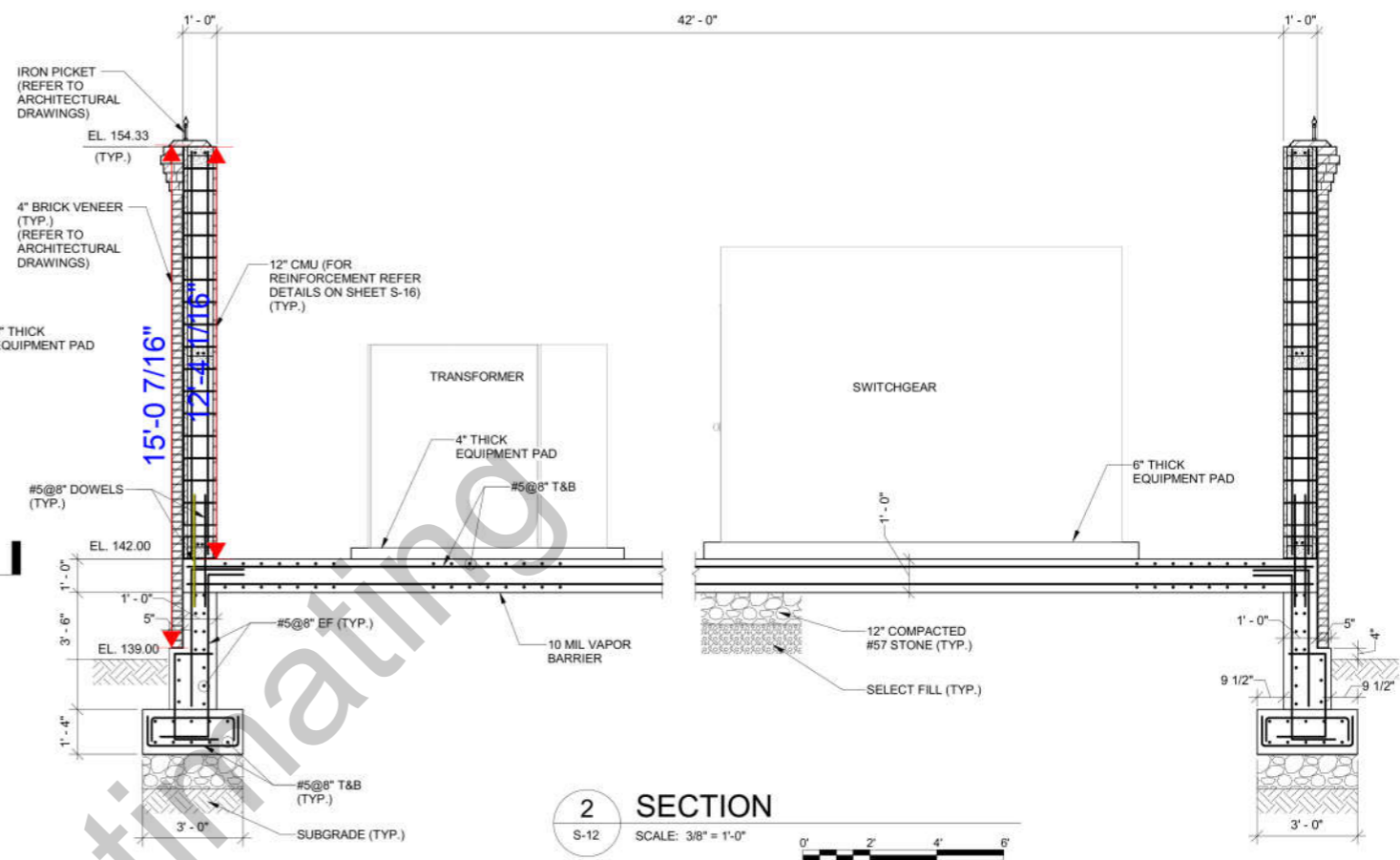
4 SWITCHGEAR AND TRANSFORMER AREA FOUNDATION PLAN
 S-04 SCALE: 1/4" = 1'-0"
 0' 2' 4' 8'

- NOTES:**
1. ALLOWABLE BEARING CAPACITY = 2500 PSF
 2. LIVE LOAD = 250PSF
 3. DIMENSIONS WITH (*) SHALL BE COORDINATED WITH OTHER DISCIPLINES.
 4. COORDINATE LOCATION OF THE OPENINGS WITH THE DOMINION ENERGY REQUIREMENTS.
 5. REFER TO ELECTRICAL SHEETS FOR DUCT BANKS BELOW GRADE.
 6. CONTRACTOR SHALL FIELD VERIFY ALL THE ELEVATIONS.
 7. 100 YEAR FLOODPLAIN EL. 140.00

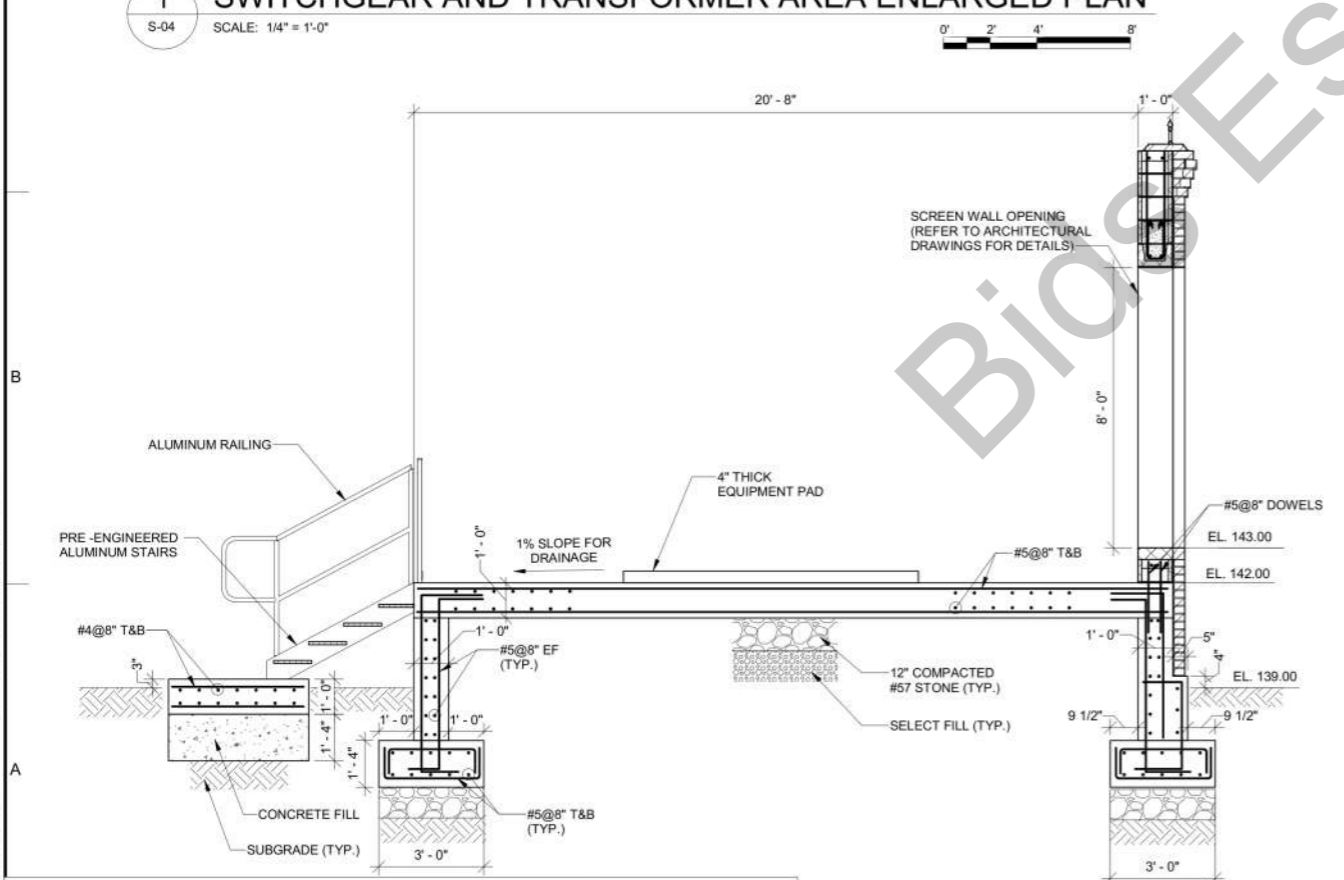
12" CMU Wall, Fabric flashing, Masonry flashing (x2), 4" Horizontal ties 8" oc vertically, Brick vaneer (15' H)
 2#8 Bar Cmu wall reinforcement (12' H)
 88.5 FT
 30.0 EA



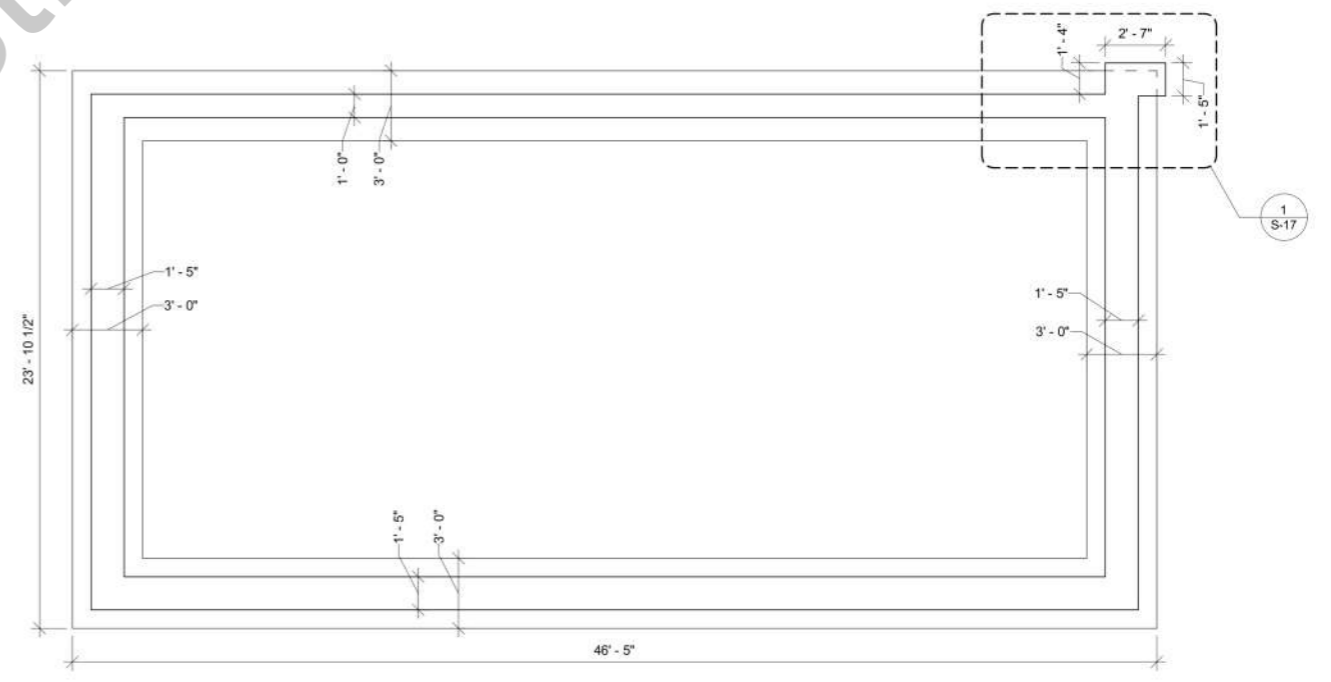
1 SWITCHGEAR AND TRANSFORMER AREA ENLARGED PLAN
 S-04 SCALE: 1/4" = 1'-0"



2 SECTION
 S-12 SCALE: 3/8" = 1'-0"



3 SECTION
 S-11 SCALE: 3/4" = 1'-0"

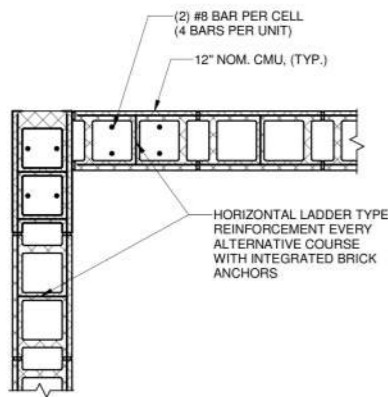


4 SWITCHGEAR AND TRANSFORMER AREA FOUNDATION PLAN
 S-04 SCALE: 1/4" = 1'-0"

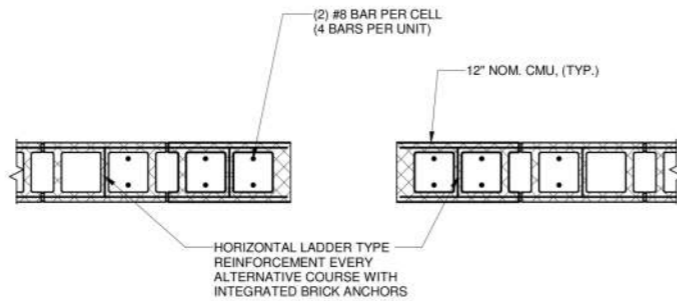
- NOTES:**
1. ALLOWABLE BEARING CAPACITY = 2500 PSF
 2. LIVE LOAD = 250PSF
 3. DIMENSIONS WITH (") SHALL BE COORDINATED WITH OTHER DISCIPLINES.
 4. COORDINATE LOCATION OF THE OPENINGS WITH THE DOMINANCE ENERGY REQUIREMENTS.
 5. REFER TO ELECTRICAL SHEETS FOR DUCT BANKS BELOW GRADE.
 6. CONTRACTOR SHALL FIELD VERIFY ALL THE ELEVATIONS.
 7. 100 YEAR FLOODPLAIN EL 140.00

#5 @ 8" Dowels

3.4 FT



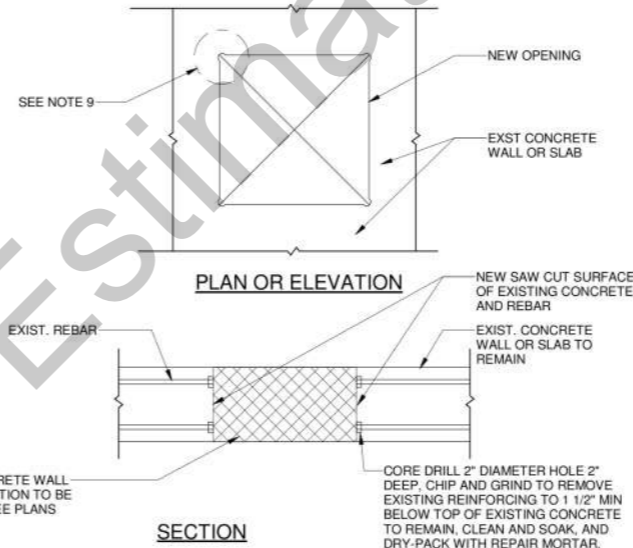
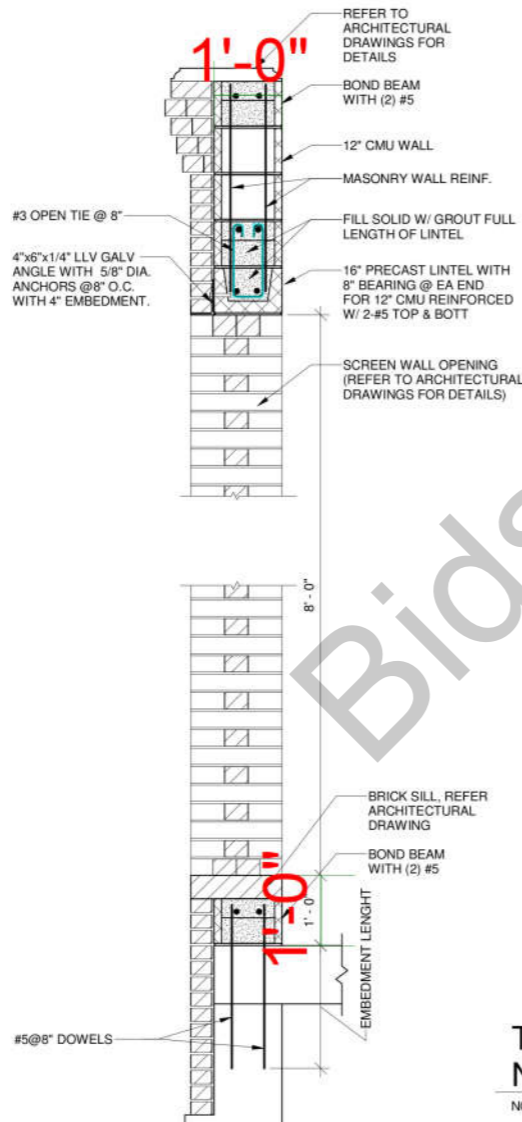
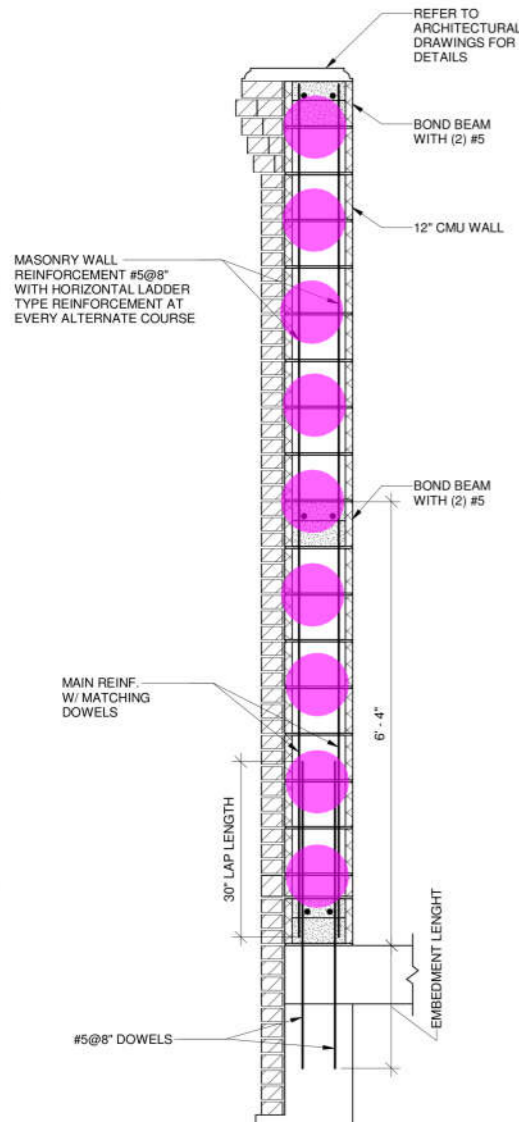
TYPICAL DETAIL
CMU WALL CORNER



TYPICAL DETAIL CMU WALL OPENING

TYPICAL CMU WALL DETAILS

NOT TO SCALE

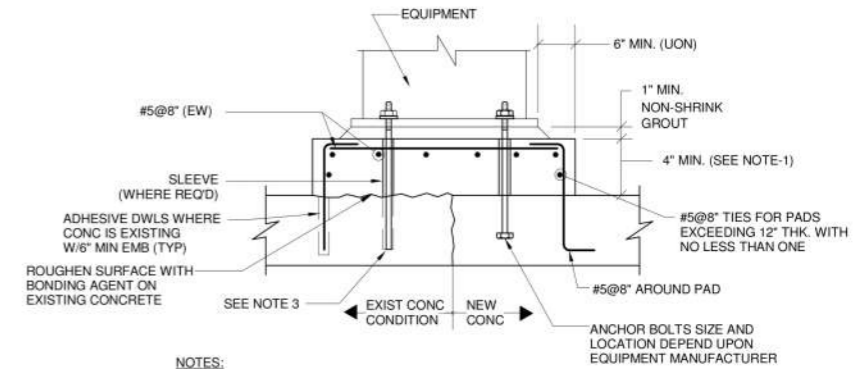


NOTES:

1. SAW CUT SURFACE OF EXISTING CONCRETE. WHERE NECESSARY, USE SPECIFIED REPAIR MORTAR TO PATCH DAMAGED OR OVER CUT AREAS PRIOR TO PROCEEDING WITH SPECIFIED COATING SYSTEM.
2. CHIP BACK AND REMOVE ALL EXPOSED REINFORCING TO A DEPTH OF 2" (MINIMUM). PATCH VOID WITH SPECIFIED REPAIR MORTAR. PROVIDE BONDING AGENT AS REQUIRED BY MANUFACTURER.
3. ROUGHEN EXISTING SURFACE AS REQUIRED.
4. APPLY A MINIMUM OF TWO COATINGS OF THE CORROSION INHIBITOR TO ALL SURFACES.
5. AFTER ADEQUATE DRYING TIME, LOW-PRESSURE WASH ALL SURFACES TO REMOVE DEPOSITED FILM FROM CORROSION INHIBITOR.
6. APPLY 2 COATS OF PROTECTIVE SLURRY MORTAR.
7. APPLY ALL MATERIALS IN ACCORDANCE WITH MANUFACTURERS RECOMMENDATIONS.
8. SUPPORT ADJACENT ELEVATED SLABS AND CUT SLAB SECTION UNTIL CUTTING OPERATION IS COMPLETE.
9. CORE DRILL CORNERS TO DIAMETER REQUIRED TO PREVENT OVER CUTTING OF REBAR AND CONCRETE BEYOND OPENING.

TYPICAL SURFACE TREATMENT OF
NEW OPENING IN EXISTING CONCRETE DETAIL

NOT TO SCALE

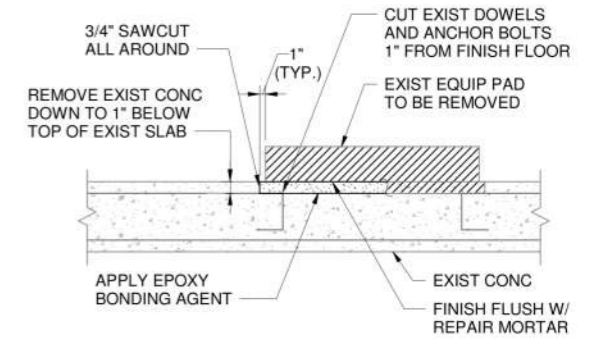


NOTES:

1. PROVIDE TYP. 4" MINIMUM CONCRETE SUPPORT PAD FOR ALL EQUIPMENT UNLESS OTHERWISE NOTED.
2. COORDINATE LOCATION AND SIZE OF PADS WITH OTHER DRAWINGS AND MANUFACTURER'S CERTIFIED DRAWINGS.
3. FOR EXISTING SLABS, DRILL HOLE DIAMETER AND DEPTH IN EXISTING SLAB PER EQUIPMENT MANUFACTURER'S REQUIREMENTS FOR ADHESIVE ANCHORAGE SYSTEM USED.

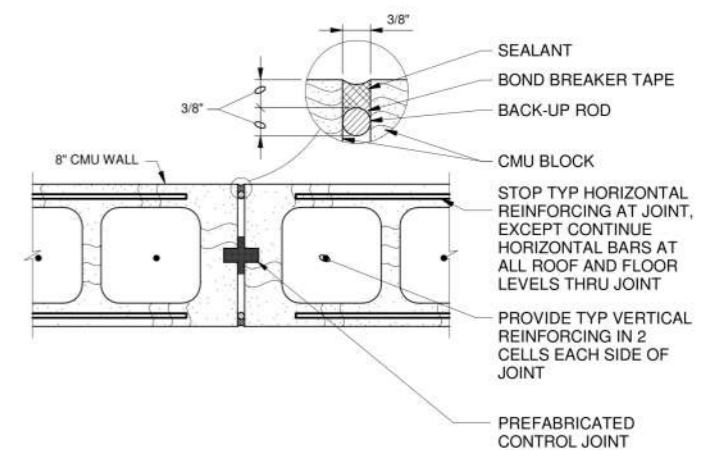
TYPICAL EQUIPMENT SUPPORT PAD DETAIL
ON NEW OR EXISTING CONCRETE

NOT TO SCALE



EXISTING EQUIPMENT PAD REMOVAL

NOT TO SCALE



TYPICAL CMU CONTROL JOINT DETAIL

NOT TO SCALE

Horizontal reinf. 9.0 EA

 #3 Open tie 3.1 FT